

**AGENDA MANAGEMENT SHEET**

**Name of Committee** Cabinet

**Date of Committee** 6th October 2005

**Report Title** Warwickshire Strategic Partnership Plan 2005 - 2008

**Summary** To consider the outcomes from the final stages of consultation with partner agencies and agree in principle the Warwickshire Strategic Partnership Plan.

**For further information please contact:** Monica Fogarty Head of Policy Tel: 01926 412514 monicafogarty@warwickshire.gov.uk  
 Fiona Tomlinson Warwickshire Partnership Co-ordinator Tel: 01926 412587 fionatomlinson@warwickshire.gov.uk

**Would the recommended decision be contrary to the Budget and Policy Framework?** No.

**Background papers** None

**CONSULTATION ALREADY UNDERTAKEN:-** Details to be specified

- Other Committees  Cabinet 24th June 2004, 18th November 2004, 30th June 2005.
- Local Member(s)  All Members received a copy of the Warwickshire Strategic Partnership Plan on the 13th June for comment by the end July 2005 - no comments received.
- Other Elected Members  All members consulted.  
 Cllr Tim Naylor "Supports measures outlined in report."
- Cabinet Member  .....
- Chief Executive
- Legal  .....
- Finance  .....

- Other Chief Officers  David Carter
- District Councils  Consulted directly between May - July 2005 - comments incorporated.
- Health Authority  Consulted directly between May - July 2005 - comments incorporated.
- Police  Consulted directly between May - July 2005 - comments incorporated.
- Other Bodies/Individuals  Coventry and Warwickshire Community and Voluntary Sector Consortium.

**FINAL DECISION NO**

**SUGGESTED NEXT STEPS:**

Details to be specified

- Further consideration by this Committee  .....
- To Council  *For final agreement of the Plan*
- To Cabinet  .....
- To an O & S Committee  .....
- To an Area Committee  .....
- Further Consultation  .....

**Cabinet - 6th October 2005.**

**Warwickshire Strategic Partnership Plan 2005 - 2008**

**Report of the Assistant Chief Executive and County Solicitor**

**Recommendation**

To endorse the Warwickshire Strategic Partnership Plan 2005-2008

**1.0 Background**

- 1.1 The Warwickshire Strategic Partnership Plan is in its final stages of development. Following discussion by Cabinet on the 30<sup>th</sup> June, it was agreed that the period of consultation with key partners would be extended to the end of July. The Plan was distributed to all key partner agencies for consideration by their decision making board. At this point the Plan was also distributed to all County Council members for consideration.
- 1.2 The Warwickshire Strategic Partnership Plan has now been considered by all partner agencies, and approval in principle has been given by all. In addition as part of this consultation some specific comments have been made.
- 1.3 In August, these comments were passed to all key officers and subsequently discussed with the Warwickshire Strategic Partnership Officer Working Group to gain agreement on the final inclusions in the Plan.

**2.0 Status of the Warwickshire Strategic Partnership Plan**

- 2.1 Attached, as appendix 1 for Cabinet members only, is the proposed final draft of the Warwickshire Strategic Partnership Plan. This incorporates any changes resulting from the final consultation with partner agencies. *[The draft Plan can be viewed on the Committee Administration System and on the Warwickshire Web].*
- 2.2 It is proposed that, following consideration by Cabinet, the Plan be presented to the County Leaders Group for final approval on the 20<sup>th</sup> October 2005.

**3.0 Local Public Service Agreement 2 (LPSA2)**

- 3.1 As part of the process, we have specifically sought to include all LPSA2 projects within the Warwickshire Strategic Partnership Plan. However in

discussions with the Office of the Deputy Prime Minister (ODPM), it is now unlikely that the LPSA2 agreement will be signed off until after Christmas.

- 3.2 Officers propose that it would be inappropriate to delay the Plan any longer, but it is imperative that these LPSA2 projects and proposed targets are retained in the Plan for performance management purposes. Therefore it is proposed that LPSA2 indicative targets are included in the Plan with a caveat identifying that these are subject to final agreement with ODPM.

## **4.0 Consultation with Schools**

- 4.1 Previously, Cabinet highlighted a need for schools and governors to be consulted regarding the section of the Plan relating to “Working in Partnership to Help Our Children Learn”. Consultation on these issues was primarily undertaken through the Children Act Project Team, and consultation has been undertaken with school governors, head teachers, and young people throughout the development of those actions. In addition Further and Higher Education providers have been involved in considering and developing various actions identified in the Plan.

## **5.0 Creating a Living Plan**

- 5.1 A key concern with any such strategy is that over a three year period, things change. Additional priorities will arise through the Plan’s lifetime, generated from local concern, our own partnership work or from central government. For example, although support for younger and older people with mental health needs has been referenced in the Plan, as a review in this area is in its initial stages, no clear actions are presently proposed.
- 5.2 To mitigate these concerns, each priority area, will develop a yearly action plan of work. The action planning process will consider the priorities in the Plan but also recognise new priorities. These action plans will identify the key actions for the year, and will be agreed and considered by the Core Group of the Warwickshire Strategic Partnership (presently the County Leaders Group).

## **6.0 Local Area Agreements.**

- 6.1 Local Area Agreements will also be key within this Partnership Plan. Although Warwickshire will not have an agreement in place until 2007 there is much work that will need to take place in the meantime. Local Area Agreements will act as an agreement between central government and our local partnership, the Warwickshire Strategic Partnership. It will aim to pool non-mainstream existing budgets of local organisations, remove the need to produce plans for each funding stream and streamline the extent of monitoring and reporting on individual pots of money. By doing this it will reduce the level of bureaucracy and create flexibility to focus on key local issues. To be able take forward a LAA for Warwickshire, there is a need:

- For the Warwickshire Strategic Partnership Plan to act as a foundation for the development of the LAA.
- To strengthen the Warwickshire Strategic Partnership

- 6.2 A report will be presented to the next Cabinet meeting on the proposals for the development of the Warwickshire Strategic Partnership, to be able to deliver effectively the Warwickshire Strategic Plan and take on this new and challenging role.

DAVID CARTER  
Assistant Chief Executive and  
County Solicitor

Shire Hall  
Warwick

September 2005

**The  
Warwickshire  
Strategic Partnership  
Plan 2005 – 08**

**DRAFT**

## The Warwickshire Strategic Partnership

This Plan has been produced by the following agencies working together:

- ◆ South Warwickshire Primary Health Care Trust
- ◆ North Warwickshire Primary Health Care Trust
- ◆ Rugby Primary Health Care Trust
- ◆ Warwickshire Police
- ◆ Warwickshire Police Authority
- ◆ Warwickshire County Council
- ◆ Warwick District Council
- ◆ Rugby Borough Council
- ◆ North Warwickshire Borough Council
- ◆ Stratford on Avon District Council
- ◆ Nuneaton and Bedworth Borough Council
- ◆ Warwickshire On-line Partnership
- ◆ Coventry and Warwickshire Chamber of Commerce
- ◆ The Councils for Voluntary Service and other voluntary sector organisations.
- ◆ Job Centre Plus
- ◆ Coventry & Warwickshire Learning and Skills Council
- ◆ Further and Higher education community

### Making the Plan Work

This Plan will only be as good as its delivery. All members of the Warwickshire Strategic Partnership are responsible for its delivery. The Partnership structure established to achieve this comprises:

- **The County Leaders Group** –to provide strategic direction, and are ultimately responsible for the delivery of the Plan and comprises leaders key agencies in Warwickshire.
- **Core Officer Group** -to collectively monitor performance
- **Priority Groups** -to deliver the actions of the Plan and report performance
- **Individual agencies** –to ensure that actions accorded to them are reflected in their business planning process and monitor the achievement of these through their own monitoring arrangements.

We will be taking additional steps to strengthen the existing Warwickshire Strategic Partnership in 2005/06, reinforcing accountability and management structures to ensure delivery.

A performance management framework has been established. Each action in the Plan has an allocated lead officer to report

performance. This will then be fed, on a six monthly basis, through the priority groups, to the Core Officer Group and County Leaders Group. It will be the role of the County Leaders Group to ensure that if targets are not being reached that appropriate action is taken to address the issue.

As well as our key targets in the Plan, the Partnership has adopted “**Quality of Life**” indicators. These indicators consider performance in four main areas: economic, social, environment and natural resources and provides the partnership with a view of “The State of Warwickshire”. The Quality of Life indicators will be considered annually; and highlighted as an issue if performance is consistently performing poorly. Further information on the Quality of Life indicators can be found at [www.warwickshire.gov.uk/qualityoflife](http://www.warwickshire.gov.uk/qualityoflife). Over the life of the Plan, we will also look to encourage and extend the sharing of data, research and intelligence between partner organisations to both improve our monitoring and influence future policy development.

### The aims of this Partnership Plan are to:

- Address the concerns and issues of communities in Warwickshire, working in partnership with others
- Provide a strategic county-wide direction to specific activities which can only be achieved in partnership
- Recognise, and complement the priorities identified at a local level.
- Act as a strategic driver for progressing the key issues facing Warwickshire with sub-regional, regional and national partners.

This plan does not aim to duplicate work already being undertaken by individual agencies. It focuses on those issues, which if dealt with in a County level partnership will have the greatest impact. At a district level Community Plans have been developed through public consultation to ensure local issues are improved through partnership activity. These five local community plans, recognise and support this Plan in their own development.

### What We Want to Achieve

- **Good quality housing** available at an affordable price.
- **A safe environment** for all those who live, work and visit Warwickshire.
- A natural **environment**, climate and resources that support and enhance life for future generations
- Sustainable economic growth, where **jobs** are created and retained; and residents are equipped with appropriate **skills and competencies**
- The best possible **health and well-being** for all

For each priority, the Plan summarises the County's current position and sets out our vision towards the year 2020. It identifies the actions and targets we will focus on in the next three years to help us all to achieve our vision.

### Our underpinning principles

When we developed this Plan, a set of core values were created upon which our work will be based. We believe throughout our work we should:

- ◆ **Ensure education and lifelong learning**
- ◆ **Provide equality of opportunity**
- ◆ **Achieve fastest improvement for the most deprived**
- ◆ **Ensure our activities are sustainable**
- ◆ **Encourage cohesive communities.**

In all cases, we have worked together to ensure these principles have been used when developing actions. Support is also available, to ensure that we continue to reinforce these underpinning principles. For example the Warwickshire Sustainability Commission has developed a toolkit to help ensure sustainability issues are considered when developing policy and actions.



## Underpinning the Plan

### Sustainable Development

The Warwickshire Sustainability Commission (WSC) is a partnership of public, private, voluntary and community interests established to help ensure that County Council's and other services are sustainable and that we incorporate sustainability in all we do. The WSC also aims to encourage partners to reflect on how we can collectively protect our environment and encourage others to do so. A key driver is the policy set out in ***Delivering the UK Sustainable Development Strategy*** 'Securing the Future': this states that:

"Government must promote a clear understanding of, and commitment to, sustainable development so that all people can contribute to the overall goal through their individual decisions".

The principles of sustainable development are set out as:

- ◆ Living Within Environmental Limits
- ◆ Ensuring a Strong, Healthy and Just Society
- ◆ Achieving a Sustainable Economy
- ◆ Promoting Good Governance
- ◆ Using Sound Science Responsibly

The priority areas for immediate action are:

- ◆ Sustainable Consumption and Production
- ◆ Climate Change and Energy
- ◆ Natural Resource Protection and Environmental Enhancement
- ◆ Sustainable Communities

These principles are reflected in the West Midlands Regional Sustainable Development Framework.

### Supporting Communities

Making our communities more sustainable, cohesive and active is an underpinning element of this Plan. All the actions proposed in the Plan aim to create communities where people want to live, work and play. A key driver for this is "***Sustainable Communities: Building for the Future - a national plan of action***". We focus on:

- Sustainable communities, threading together issues such as: achieving economic prosperity; access to affordable housing, good education, health; and pleasant places to live and work.
- Community cohesion, creating a common sense of belonging and fairness within communities, where people's different backgrounds and circumstances are positively valued.
- Active communities, to help people to help themselves, so they can be active in community and public life and influence their future and the decisions that affect them.

We will work together to identify those locations requiring intensive support, and identify actions to support those communities. In delivering this Plan we will aim to involve our communities in the design, delivery and monitoring of the actions identified.

To achieve this, we are working together, through partnerships, to coordinate services to improve community well-being. Voluntary sector infrastructure organisations (such as the Councils for Voluntary Service, the Rural Community Council and Volunteer Centres) are also working more closely together to support the community.

### Children Services

An exciting challenge for Warwickshire is the development of our partnership-based Children's Services. ***The Children Act***

**2004** requires every local authority to work with all children, young people and their families and all the organisations relevant to their lives.

In Warwickshire we have risen to that challenge and we are pursuing the five outcomes of:

- **Being Healthy**
- **Staying Safe**
- **Achieving and Enjoying**
- **Economic Well Being**
- **Making a Positive Contribution**

These outcomes came from an extensive national consultation process asking children, young people and their families how their lives could be improved. The aims are consistent with Warwickshire's preventative strategy.

Services for children and families include: primary health care; child care; community policing; fire; further and higher education; housing; leisure and library services; schools; and transport.

It is the role of partner agencies to focus their services on the needs of children, young people, their families and communities by integrating them locally for the different ages and stages of development. The Children & Young People's Strategic Partnership Board will oversee services for children, young people and their families in Warwickshire. The Warwickshire Strategic Partnership also comprises the partners developing the Children's Services.

### **Access to Information and Services**

Partners in Warwickshire place a high priority on providing information to citizens and making sure that as many people as possible have easy access to services. Many of these issues have been reflected through this plan.

Ensuring Warwickshire has an appropriate transport infrastructure is critical. The Warwickshire Partnership Transport theme group will continue to develop actions, through the Local Transport Plan, to improve the quality of life and prosperity of residents, visitors and business. Transport actions are identified throughout this Plan, to reflect how transport affects all areas of our lives.

New technologies can also offer options to dramatically improve the services offered to the public as well as improve the information about services and methods by which people can access them.

The Warwickshire Online Partnership (WOLP) – comprising the six local authorities in Warwickshire – was set up in 2002. It aims to improve the services offered to the public through the sharing of resources, technology, and good practice. It is an active group in the Warwickshire Strategic Partnership. Its successes include:

- Procurement of a joint customer contact centre and the associated systems to run it;
- Identifying savings through joint procurement and partnership working; and
- Implementation of contact centres in each partner authority

In 2005-08 to continue to support this Plan, WOLP will:

- Develop, agree and implement a joint Access to Information and Services Strategy. The Strategy is to be agreed by March 2006 for implementation.
- Extend the Joint Strategy to include other public agencies including the Police and Primary Care Trusts by 2008.
- Meet the 2005 target for delivery of 100% of services electronically.

- Support the introduction of a number of one-stop shops across Warwickshire.

### **National and Regional Drivers**

Warwickshire does not sit in a vacuum. Many actions taken in areas surrounding us have a direct effect on our social, environmental, and economic well-being. For example the development of the new Coventry Arena will have an impact in Warwickshire. Throughout this Plan we have made reference to some of these issues. Furthermore, plans are developed nationally, regionally and sub-regionally to create change. All the actions proposed in this Plan are consistent with appropriate key national, regional and sub-regional frameworks and strategies.

These have been referred to throughout the document. Examples of key drivers include:

- Change to European Structural Funds that will affect the levels of funding to the West Midlands
- The potential longer-term effects of the Milton Keynes Urban Development Area
- Strengthening Partnerships -Next Steps for Compact (Developing an agreement between the community and voluntary sector and local government).
- The West Midlands Economic Strategy
- Neighbourhood Policing – “your police; your community; our commitment”
- Building Communities, Beating Crime – A better police service for the 21st Century
- Choosing Health: making healthy choices easier” and “Tackling Health Inequalities – A Programme for Action

## BRINGING A SPATIAL DIMENSION TO THE STRATEGIC PLAN

The Warwickshire Structure Plan 1996 – 2011 sets out the directional steer and land-use framework for the County. However, recently the planning system has undergone a major overhaul. The new planning system now looks at what should happen, where and when. It covers a wide range of land use issues and also brings together and integrates with other policies, which influence the area.

As part of this new spatial planning process, Warwickshire will need to align its plans to the national and regional frameworks i.e. the Warwickshire Structure Plan and the Regional Spatial Strategy for the West Midlands.

The **Warwickshire Structure Plan** looks to address the pressures and opportunities that Warwickshire is likely to face over the period to 2011. Its overriding aim is to promote a pattern of development to meet the needs of the community without reducing the capacity of the environment for present and future generations.

This translates into strategic objectives that -

- Allow homes and jobs to be provided to meet the needs of the whole community;
- Concentrate development in towns, preferably on 'brownfield' land (50% of the 31,100 new houses and 62% of the 768 hectares of new employment land);
- Promote greater use of public transport, walking and cycling for all;

- Retain and support the clear distinction between our towns, villages and countryside, by protecting the integrity of the Green Belt;
- Protect and enhance the County's landscape character (both urban fringe and wider countryside);
- Enable the economy to grow and change appropriately;
- Emphasise the benefits of town centres as places to live and work; and
- Conserve resources of land and energy, including minerals and water, and makes maximum use of renewable energy resources.

These objectives steer most new development and associated investment towards the County's nine main towns, Atherstone, Polesworth/Dordon, Nuneaton, Bedworth, Warwick, Leamington Spa, Kenilworth, Stratford-upon-Avon, and Rugby. Development that meets the following priorities will be encouraged that which;

- Pushes economic confidence North;
- Favours development on 'brownfield' land in our main towns as they already have access to jobs, community facilities, shops and public transport;
- Is targeted at meeting the needs of the local population, and
- Reflects the changing economic basis of rural areas.

During the life of the Structure Plan, the new **Regional Spatial Strategy for the West Midlands (RSS)** has been introduced, which looks to setting a vision beyond 2011 up to 2021. The

most important themes are the need for a 'step change' to stem out-migration from the major urban areas (e.g. Coventry and Birmingham) and sustainable development. It aims to make the Region's big cities and major urban areas attractive places to live and work. Furthermore there will be a review of specific themes in the RSS in the autumn of 2005, which will affect the distribution, and location of new development over the next 20 years.

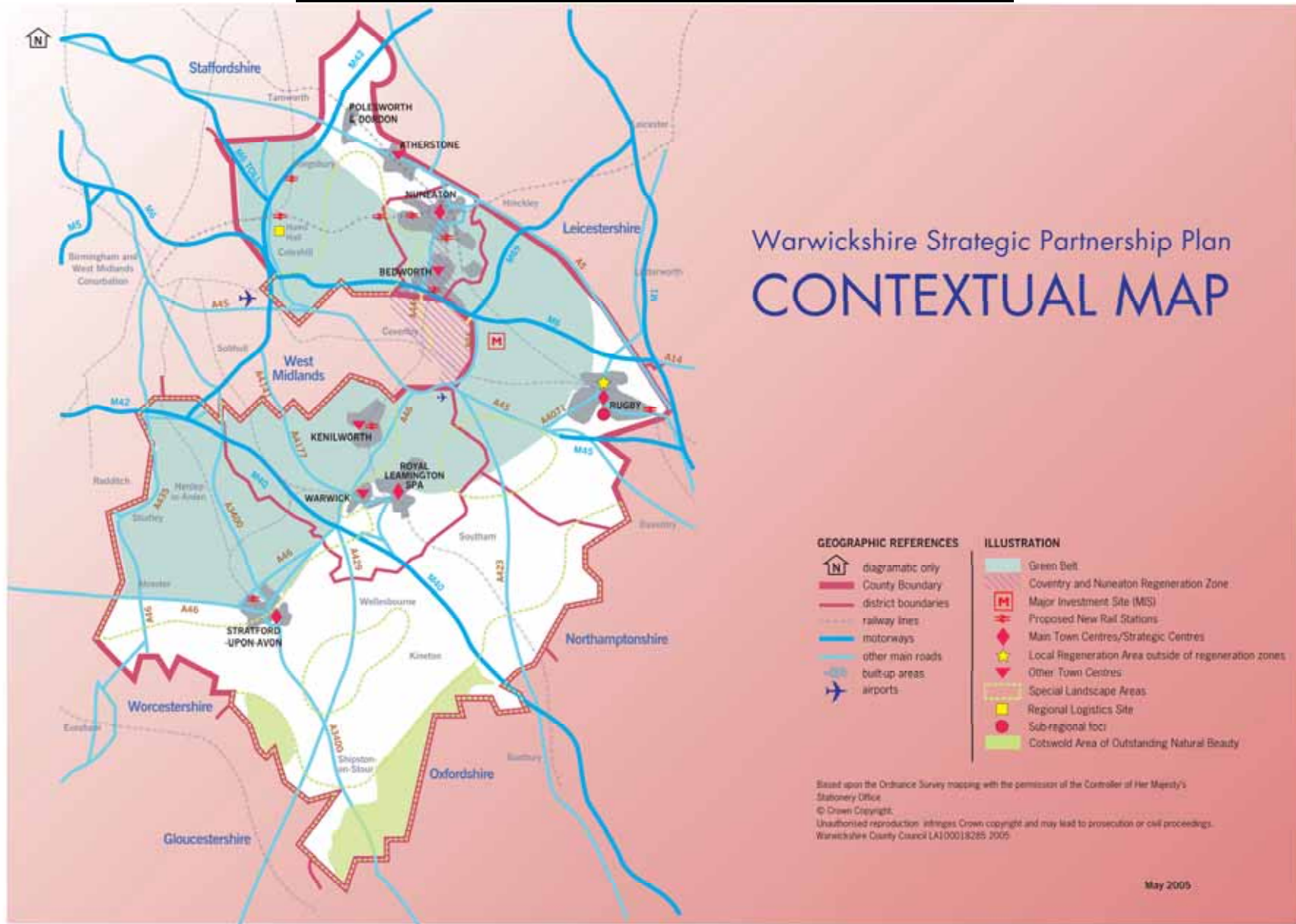
Like the Structure Plan the RSS's emphasis is on 'brownfield' development in the right location. In the shires, there is an increasing focus of development on key towns, designed to create balanced communities. This will see a reduction in the overall scale of market housing of at least a third of the current

levels. In the rural locations there is a drive to match development to the needs of the local communities.

The Warwickshire Structure Plan is entirely consistent with the RSS, thus retaining its relevance, beyond 2011. Our Plan reinforces the issues set out in the RSS with growth, although limited, in the main towns and any growth in rural areas restricted to meeting local need.

The spatial strategy running through this plan will provide a vital input into the long-term review of the RSS. It is expected that all activities in this plan will be considered against, and connect with, this basic spatial dimension and promote 'step change' and 'sustainability'. The map shows the key spatial objectives referred to above.

# WARWICKSHIRE - THE COUNTY IN CONTEXT



# WARWICKSHIRE – THE COUNTY IN CONTEXT

## **Our People**

Warwickshire's population has changed significantly in recent years. Over the last thirty years the total population of the County has increased by over 50,000 people - well above both regional and national comparisons and mainly concentrated in the south of the County.

The age profile of our population has also changed; since 1981 the number of people aged over 85 has more than doubled whilst those under the age of 25 have fallen. This change is mainly determined by migration. In-migration to Warwickshire has tended to be of mainly older persons whilst out-migration is largely of the younger age groups.

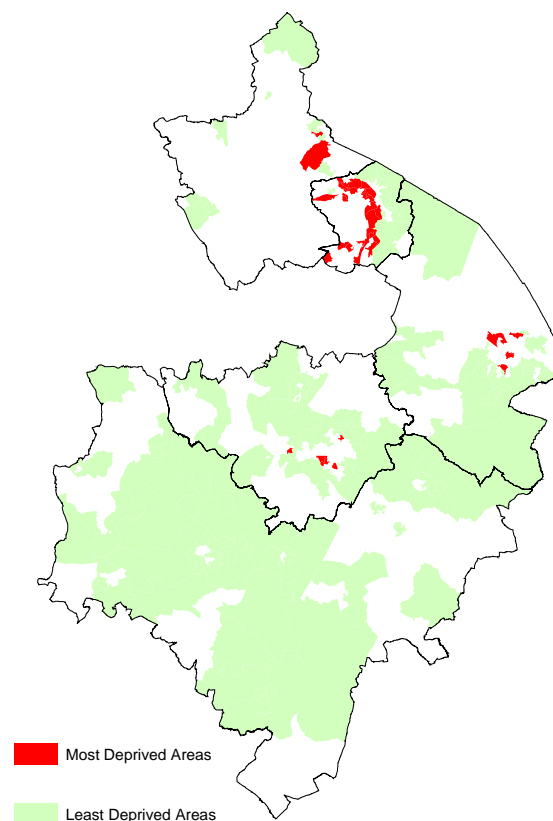
Alongside population growth the number of households in Warwickshire has also increased and there are significantly more single person households.

The latest population projections from Central Government indicate our population growth is likely to continue well into the next decade. In fact based on current trends the rate of growth between 2011 and 2021 is likely to be even greater than that between 2001 and 2011.

Across the County, the numbers of minority ethnic people have increased, accounting for a slightly larger share of the population in 2001 (4.4%) than in 1991 (3.4%). The Indian ethnic group is the largest minority group, accounting for 2.4% of the population, and these residents are primarily located in Warwick, Nuneaton & Bedworth, and Rugby local authority areas.

## **Disadvantaged Communities**

Despite Warwickshire's overall prosperity and strong economic performance there are significant inequalities that exist across the County with a number of communities, often in specific localities, experiencing deprivation and disadvantage.



Whilst higher levels of deprivation exist in the north of the county, even within generally more prosperous southern districts,



pockets of disadvantage exist, compounded by the physical and practical problems of lack of transport and support services, and of limited employment opportunities outside the main towns.

Almost a quarter of children in Nuneaton & Bedworth live in a lone parent household whilst almost 4,000 children within the Borough live in a household where no adult is in employment. Inequality also exists within districts.

The Office of the Deputy Prime Minister's Index of Multiple Deprivation 2004 (IMD 2004) provides the most detailed and comprehensive measure of deprivation and disadvantage to date. It reveals:

- Two areas within Nuneaton & Bedworth feature within 10% most disadvantaged in England.
- Of the 37 Warwickshire areas in the worst 30% nationally, 26 are within Nuneaton and Bedworth, 4 within Rugby, 5 within Warwick and 2 within North Warwickshire.
- The IMD 2004 also measures the disadvantage rural communities can experience in terms of the accessibility of key services and access to affordable housing. Five Warwickshire Super Output Areas feature in the 1% most deprived areas for access to services and housing in England. These areas are all in Stratford and Warwick districts

## **Local Area Agreements**

Local Area Agreements (LAAs) are agreements made between central government and local publicly funded organisations. Their aim is to achieve local solutions that meet local needs, while also contributing to national priorities and the achievement of standards set by central government. In Warwickshire, our Local Area Agreement will need to be in place by 2007 and will be developed by the Warwickshire Strategic Partnership. The Agreement will focus around four "functional blocks"

- Children and young people
- Safer and stronger communities
- Healthier communities and older people
- Economic development and enterprise

## **Local Public Service Agreements (LPSA2)**

Local Public Service Agreements are funding agreements between central government and a local authority based both nationally and on locally derived priorities for improvement. This will, at a later stage form the "reward element" of Warwickshire's Local Area Agreement. Warwickshire County Council, on behalf of key partners has agreed to enter into a LPSA2 with central government to deliver a number of specific targets. These targets are stretching, to be delivered in 3 years, and achievable only through partnership. As these are critical areas of work, and provide added value by working in partnership, all LPSA2 projects have been incorporated and identified in this Partnership Plan. This will also assist in ensuring effective performance management of the LPSA2 actions. However at this stage the targets are still awaiting final agreement from the Office of the Deputy Prime Minister (ODPM).



## Housing Affordability

***Our Vision is to: Ensure good quality housing is available at an affordable price.***

### Warwickshire Now

The “***Sustainable Communities in the West Midlands***” Strategy is critical element to the development of housing in Warwickshire. This specifically identifies a number of key areas which either individually or collectively partners should be addressing these include:

- Tackle poor housing conditions
- Take action to meet the Decent Homes standard in the social housing sector.
- Improve more non-decent homes in the private sector,
- Support urban and rural renaissance by tackling the shift of population from the urban areas to the rest of the region
- Tackle the problems of low housing demand.
- Ensure optimal development of brownfield sites
- Ensure provision of sufficient affordable homes in areas of shortage.
- Tackle the factors that cause homelessness.
- Use planning to create the variety and choice of high quality living and working environments required for urban renaissance particularly in the regeneration zone e.g. Nuneaton.

Owner occupation in Warwickshire (75.6%) is above regional and national levels.

House prices vary considerably between Warwickshire districts; properties in Stratford and Warwick are less affordable than elsewhere in the county. Whilst household size is decreasing, the housing market is continuing to provide generally larger dwellings.

The Warwickshire Structure Plan enables local planning authorities to decide, through their Local Plans, to identify sites for 100% affordable housing (if their housing needs survey justify it).

Between 2001 and 2002 wage levels in Warwickshire remained fairly static while house prices rose. This imbalance has meant that houses are now relatively more expensive. Household Income Data shows that many households in Warwickshire would not have sufficient resources to buy even the cheapest of available dwellings, if they were all first-time buyers in the current housing market.

In 2002, the average semi-detached house in Warwickshire cost more than 5.5 times the average annual wage, whilst the average terraced house cost around 4.5 times the average annual salary.

If house prices continue to rise more quickly than wage levels, the ratios will increase; implying that housing in Warwickshire will become less affordable.

The quality of the housing in Warwickshire continues to exceed both regional and national averages, with only 3% classified as unfit. In addition the proportion of our homes classed as unfit has been continually declining in recent years.

Each local housing authority is responsible for undertaking a housing needs survey. This information will be beneficial in

## Housing Affordability

informing future actions and identify appropriate responses both at a district, and also where appropriate at a county, level. The need for people to value and be proud of where they live is essential. All partner agencies and communities have their own role to play to create local areas where we want to live. Improving the local environment through creating safe and clean areas plays a strong role in this. We will continue to work jointly to identify and target areas where there is a need to enhance specific areas.

There is also a need to improve the availability, choice and quality of care homes, including extra care housing and the further development of publicly owned land on which to build specialist accommodation.

**The actions proposed are building blocks, laying the foundation to work to address the issues of housing affordability in Warwickshire. We will work together to forward all these proposed actions.**

### **Drivers and Challenges**

We must

- ◆ Take a strategic role in planning and building homes and communities as identified in the Office of the Deputy Prime Minister (ODPM) five year plan; ***Sustainable Communities - Homes for All***.
- ◆ Take account of the Regional Housing Body study to assess housing needs on a sub-regional market basis
- ◆ Recognise that creating sustainable communities is at the heart of our work, with housing being a key influence in ensuring this, for example as reflected in initiatives such as the regeneration scheme at Camp Hill Nuneaton.

## Housing Affordability

### What we will do in the next three years

Objective and Action	How we will know we have succeeded	Who will be involved
We will carry out a capacity study by all stakeholders to identify land that could potentially be released for affordable housing.	Completion of land identification study of new and “rural” exception sites, December 2005 Release of land for affordable housing development, (potentially including middle market and special needs tenure) - first phase release June 2006	<b>Warwickshire County Council</b> , Police Authority, Primary Care Trusts, District / Borough Councils, housing providers, and other Warwickshire Partnership partners
We will identify the most sustainable methods of procuring new affordable housing	Determine the most effective procurement approach including modern methods of build construction, completion by December 2006	<i>Heart of England Housing Group</i> , <b>District / Borough Councils</b> Warwickshire County Council Housing providers
We will promote the creation of sustainable communities through understanding community needs, and how affordable and good quality housing contributes to community vitality.	To examine the role of Local Area Agreements in creating stronger and sustainable communities and an appreciation of housing needs.' Working with communities to produce a programme of area needs analysis and of which securing support for good quality and affordable housing will form a key component by December 2006	<b>Housing Market Area Partnerships</b> , Warwickshire County Council, Heart of England Housing Group, Housing providers, Voluntary Sector
LPSA2 – We will improve streets for people by improving our street scenes in specific targeted areas through lighting, graffiti cleaning etc and reducing the number of antisocial behaviour and nuisance incidents.	LPSA2* - 40% enhancement in our built environment LPSA2* <ul style="list-style-type: none"> <li>◆ 16% enhancements in the quality of our street environment in major town centres,</li> <li>◆ 8% enhancements in the quality of our street environment in market towns,</li> <li>◆ 30% enhancements in the quality of our street environment in selected district centres</li> </ul>	<b>Warwickshire County Council</b> , District and Borough Councils, Warwickshire Police, Primary Care Trusts,

## Jobs, Skills and Learning

***Our Vision is for sustainable economic growth, where jobs are created and retained; and residents are equipped with appropriate skills and competencies***

### Warwickshire Now

Whilst we are located in the West Midlands, in the Coventry, Solihull, and Warwickshire sub region, Warwickshire exhibits many characteristics of the knowledge economy of the south-east and the economies of Oxfordshire and Northamptonshire. .

However there has been significant structural change to our economy, resulting in job losses, most recently in the manufacturing sector. Whilst we have seen job growth in new sectors such as distribution, business services, ICT, and social care, some areas, particularly in the north of Warwickshire, require particular support. The Camp Hill Regeneration programme is the most recent example, where partnership working is addressing structural failure and increasing job opportunities, improving access to and take up of services, improving educational attainment, and providing better housing.

Manufacturing employment will continue to decline over the life of this Plan due mainly to competition from India, South East Asia, and East Europe. However some parts of the manufacturing sector in Warwickshire are performing well and competing effectively in a global market.

The move toward higher value added manufacturing sectors and significant service sector growth has resulted in a resilient economic performance when much of the West Midlands has faltered. Gross Value Added (GVA) grew by an annual average

of 5.9% between 1995 and 2002, well above the regional and national averages.

Fairly positive headline figures in the labour market mask some specific and very challenging issues for the Warwickshire economy. Jobs per 1000 population, employment levels, and residence based average weekly earnings vary considerably within the county. Nuneaton and Bedworth and North Warwickshire areas both suffer in comparison with national statistics on wage rates, skills and educational attainment.

Unemployment in Warwickshire is low. However 6.5% and 1.3% of the working age population respectively are claiming incapacity benefit and lone parents benefits. Many of these would take work if they were given the appropriate support.

There are also a number of issues to be addressed in the rural areas of the County. Employment in the agricultural economy is low, but it still plays a key role in maintaining the considerable asset value of the farmed landscape, and we need to continue to assist in helping to modernise, diversify, and sustain the County's rural economies.

Warwickshire suffers from skill shortages particularly in the transport and distribution, hotels and restaurants, retail and construction sectors. There have also been difficulties in recruiting into some of the lower paid and skilled occupations. Where there will be rapid changes to a sector, recruitment

## **Jobs, Skills and Learning**

patterns will also need to become more flexible and adapt appropriately. Looking forward we need to attract and retain graduates in the Warwickshire economy and foster innovation and entrepreneurial talent.

To create the long term sustainability of the Warwickshire economy, we need to support

- Diversification of the economy and growth in entrepreneurship
- Higher, added-value assembly and component manufacturing through knowledge intensive employment.
- ICT by greater graduate retention;
- Construction with recruitment practices diversifying to exploit the wider labour market and better training provision; and

### **Skills and Learning**

Educational levels in Warwickshire at all levels are above national average and rising. Levels of participation post-16 are high and the number of 17 year olds not in Education Employment or Training very low. Action is being taken to reduce that number further. Key to raising standards is the strategy of increasing the range of opportunities both vocational and academic, through collaboration between schools, colleges, and other providers. Also key is a culture of lifelong learning and a range of formal and informal opportunities for adults to access

learning including essential skills, work based training and learning for its own sake.

### **Drivers and Challenges**

We need to:

- ◆ Ensure our economic performance matches that of the most successful regions.
- ◆ Increase the value of the Warwickshire economy's Gross Value Added (GVA)
- ◆ Retain the jobs of today and create the jobs of tomorrow by encouraging investment and supporting entrepreneurship and through supporting local business by providing economic intelligence, business support, and training.
- ◆ Target specific sectors to develop; including precision engineering, tourism, ICT and business services.
- ◆ Provide the infrastructure to promote growth
- ◆ Attract and retain graduates in the Warwickshire economy.
- ◆ Broaden the academic and vocational opportunities available to young people, and increase the rate of progression through collaboration between education providers.
- ◆ Assist in tackling deprivation through the provision of jobs and skills.

## Jobs, Skills and Learning

### What we will do in the next three years

Objective and Action	How we will know we have succeeded	Who will be involved
<p>To support business to grow with particular emphasis on growth of higher added value business, particularly in areas where they are currently underrepresented, we will:</p> <ul style="list-style-type: none"> <li>➤ Support and attract businesses to the most appropriate areas of the county and secure the sustainability of our town centres, market towns and other employment sites</li> <li>➤ Maximise the regeneration and business development opportunities of the Regeneration Zone and specifically Camp Hill</li> <li>➤ Provide local bases to deliver accessible business support.</li> <li>➤ Ensure an appropriate range and quality of land and premises for new and existing businesses</li> </ul>	<p>Increase our Gross Value Added (GVA) relative to the region, with an aim of increasing our ranking by one place. (Baseline 2002 – Warwickshire 3<sup>rd</sup>).</p> <p>Increase the percentage of businesses in knowledge driven sectors and reduce inequalities between the districts</p>	<p><b>Warwickshire County Council,</b> Coventry and Warwickshire Chamber of Commerce- Business Link, Coventry and Warwickshire Learning and Skills Council, District and Borough Councils, Advantage West Midlands</p>
<p>To create a more diversified economy we will:</p> <ul style="list-style-type: none"> <li>➤ Support the development of new industry such as medical technologies and extend our precision engineering/motor sport sectors</li> <li>➤ Develop the infrastructure to support the growing creative, cultural and social enterprise sectors as well as rural enterprises</li> <li>➤ Develop the visitor economy working across regional and County boundaries and by maintaining the rural fabric of Warwickshire</li> <li>➤ Support and sustain the development of an entrepreneurial and innovation culture across the County</li> </ul>	<p>Increase the % of employers rating Warwickshire as a good location to 69.5% from 68% in 2004/5.</p> <p>Increase employment in the motor sports and medical technologies sector</p> <p>Year on year increase the percentage of start up businesses surviving for at least 12 months and 3 years</p> <p>Develop and implement a Visitor Economy Strategy. And create year on year increase in the number of overnight visitors to the County</p>	<p><b>Warwickshire County Council,</b> Coventry and Warwickshire Chamber of Commerce- Business Link, Warwickshire Investment Partnership, Advantage West Midlands, District and Borough Councils, CSWP Rural Forum and Rural Hub.</p>

## Jobs, Skills and Learning

Objective and Action	How we will know we have succeeded	Who will be involved
<p>We will deliver relevant and accessible training to businesses to assist in reskilling and upskilling the workforce through:</p> <ul style="list-style-type: none"> <li>➤ Use of the professional sector as intermediaries to promote the benefits of training</li> <li>➤ Improving the demographic and economic intelligence available to business</li> <li>➤ More flexible training provision from colleges and the private sector providers</li> <li>➤ Better promotion by Colleges of their facilities and courses</li> <li>➤ Improve the dialogue between Colleges and businesses to identify training requirements.</li> <li>➤ Create a responsive brokerage system to support the training needs of businesses (SkillsSolutions)</li> </ul>	<p>0.2% year on year increase in the number of local jobs in Warwickshire</p> <p>Increase from 67% to 75% the number of employees who have received training during the previous 12 months.</p> <p>Increase the level of working age population with NVQ level 4 (presently 23.3%) and NVQ level 2 (15.5%)</p> <p>20% yearly increase in the number of firms accessing business support services via SkillsSolutions</p>	<p><b>Coventry and Warwickshire Learning and Skills Council - Coventry and Warwickshire Chamber of Commerce– Business Link</b></p> <p>Warwickshire County Council, Federation of Small Business, Professional Sector, Colleges Private sector training providers</p>
<p>We will improve basic skills in the most deprived areas of the County and in under-represented groups through</p> <ul style="list-style-type: none"> <li>➤ Better targeting of provision to priority groups and localities</li> <li>➤ Giving a higher profile to family and parenting support and ensuring that parents have the opportunity to develop their skills through literacy, language and numeracy learning programmes</li> </ul>	<p>The ratio of average household income in best district to worst district to be 1.17 by 2008</p> <p>Increase in NVQ level 2 skills in 10% most deprived wards of Warwickshire</p> <p>Create strong links with Family Learning and Library Service</p>	<p><b>Coventry and Warwickshire Learning and Skills Council</b></p> <p>Warwickshire County Council, Federation of Small Business, Coventry and Warwickshire Chamber of Commerce - Business Link, Colleges, Community and Voluntary Sector, Job Centre Plus, Information, Advice and Guidance Network</p>

## Jobs, Skills and Learning

Objective and Action	How we will know we have succeeded	Who will be involved
<p>We will provide impartial advice and guidance to enable young people and others to make informed career choices about the jobs likely to be available to them and increase the positive destination of young people through</p> <ul style="list-style-type: none"> <li>➤ Improved engagement of businesses in careers advice and work readiness training</li> <li>➤ Improved career advice provision to secondary schools</li> <li>➤ Support for enterprise education in schools and colleges</li> <li>➤ The provision of relevant information about the economy to all agencies involved in providing careers advice</li> <li>➤ Enhanced curricular provision for work related learning including quality of work experience</li> <li>➤ Wider advertising of job opportunities available</li> <li>➤ LPSA2 – in a fire station setting work, with vulnerable young people to aid their personal development and encouraging positive destinations.</li> </ul>	<p>LPSA2* – Increase to 96% from 93.3% the number of young people in year 11 who have positive destinations</p> <p>Reduce the number of young people not in education, employment or training to 5.0% from 5.4%</p>	<p><b>Coventry and Warwickshire Learning and Skills Council,</b> Warwickshire County Council, Connexions, Colleges, Education Business Partnership, Schools, Warwickshire youth organisations, Community and Voluntary Sector, Coventry and Warwickshire Chamber of Commerce - Business Link, District and Borough Councils,</p>



## Jobs, Skills and Learning

Objective and Action	How we will know we have succeeded	Who will be involved
<p>We will reduce the number of economically inactive (including those on incapacity benefit, lone parents and carers) by helping those who would want to work secure work through</p> <ul style="list-style-type: none"> <li>➤ Early engagement with these individuals, improving employability skills and through supporting confidence building measures</li> <li>➤ Promoting and supporting the adoption of good employment and recruitment practices by employers throughout the County, particular in respect this target group</li> </ul>	<p>80% of people of working age will be in employment by 2008</p> <p>Reduce the number of young people not in education, employment or training to 5.0% from 5.4%</p>	<p><b>Job Centre Plus</b> Warwickshire County Council, Coventry and Warwickshire Learning and Skills Council, Coventry and Warwickshire Chamber of Commerce - Business Link, Federation of Small Business, Community and Voluntary Sector, Information, Advice and Guidance Network</p>
<p>We will provide and maintain transport infrastructure that supports a competitive economy and encourage business to remain in and relocate to Warwickshire and seek to improve mobility for all.</p>	<p>Achieve the Local Transport Plan (2) congestion targets</p> <p>Achieve the Local Transport Plan (2) targets for maintenance condition of the highway network and bridge stock</p> <p>Maintain the current level of public satisfaction with the maintenance condition of the highway network.</p>	<p><b>Warwickshire County Council,</b> District and Borough Councils, Government Departments, Private Sector, Community and Voluntary Sector, Rural Transport Partnerships</p>

## Jobs, Skills and Learning

### Working In Partnership to help our Children Learn

Objective and Action	How we will know we have succeeded	Who will be involved
We will collectively reshape and develop our service provision to improve service for our young people.	Create an integrated Children and Young Peoples Strategy which includes joint planning, commissioning and pooled resources, by April 2006.	<b>Warwickshire Children and Young People's Strategic Partnership Board</b>
We will develop Children's centres and extended and full school service to allow children and local communities to access education and training including the creation of e-learning through We-Learn and the Extended School Initiatives"	<p>Extended school pilot rolled out across the County. Strategy agreed by June 2005.</p> <p>The "core offer" of childcare services to be offered in 12 locations by March 2006 and with 20 Children's Centres opened by March 2010.</p>	<b>Warwickshire Children and Young People's Strategic Partnership Board</b>
We will consolidate non-formal youth provision into a single service	Consolidation of all non-formal youth provision into a single service by 2006	<b>Warwickshire Children and Young People's Strategic Partnership Board</b>
LPSA2 – We will improve attainment and achievement of young people through music and dance	By 2008 improve the attainment and achievement of selected cohorts of young people across 12 schools and four areas of the County through additional music and dance provision. LPSA2* target.	<b>Warwickshire Children and Young People's Strategic Partnership Board</b>

## Environment

***Our Vision is for Warwickshire to be a place where our landscape, our built and natural environment, and our diversity of habitats and species are appreciated and protected by all. Everyone will understand their responsibility to reduce the consumption of natural resources, combat climate change, and minimise waste. We will invest in modern techniques to deal with the waste we do produce in an effective and healthy way sensitive to the environment and the economy.***

***Our communities will be active, caring, safe, and welcoming to visitors.***

### Warwickshire Now

#### **Procurement and Waste**

Despite substantial improvements in reducing waste and recycling, the majority of household waste produced in Warwickshire goes to landfill. In partnership we intend to reduce the waste we generate to 270,000 tonnes a year, and increase recycling rates from the current 21.5% to 40%.

As partners, there has been little coordination in reducing our own corporate waste, and it is proposed that this will be addressed.

We collectively need to be buying sustainably - focusing on whole life value and life cycle costing. Through the Midlands Recycling consortium a proposed paperless on-line procurement system for the Warwickshire councils is being developed.

We will also look to further develop our approach to Highway Maintenance, using sustainable principles through procurement, recycling of materials and the management of construction waste.

#### **Towards A Low Carbon Future**

Whilst many organisations have sought to control energy costs few have yet concerned themselves with their own carbon dioxide (CO<sub>2</sub>) emissions ~ whether from buildings, travel or business activities. It is now down to all sectors to consider how best to deliver their share of carbon emission reductions for 2010 and move positively towards the national target of 60% reduction by 2050. Based on UK emissions figures, the West Midlands Energy Strategy and Warwickshire specific energy consumption figures, in Warwickshire we will need to reduce annual emissions by an extra 57,000 tonnes of carbon dioxide each and every year to 2050 from a base year of 2003.

#### **Educating Tomorrow's Adults**

Decisions today affect the world in which our children will grow up and it will be our children who live with the consequences of our actions. The Warwickshire eco-schools programme commits schools to improve their environmental performance by carrying-out everyday actions in an environmentally sound way. The programme also promotes Sustainable Development in the wider community and will engage at least 100 schools by the end of the plan period.

# Environment

## **A Future without Regrets: Protecting Natural Resources and Enhancing the Environment**

Locally, there has been a loss of hedgerows, traditionally managed woodland and unimproved grassland resulting in an increasingly 'species poor' countryside. Warwickshire is one of the two worst hit counties in England with flower-rich pasture and meadowland has reduced to just a few hundred acres - a 97% loss between the second World War and 1996 and 32% loss of our hedgerows, both as a result of agricultural intensification. Additional temporary losses of species such as the Otter and Buzzard resulted from the use of pesticides like DDT and numerous species of birds, insects and plants that once occurred in our area can no longer be found.

The Warwickshire, Coventry and Solihull Local Biodiversity Action Plan, comprises separate plans for 26 species and 24 habitats and sets out how anyone, including landowners, land-managers and policy makers can protect the characteristic wildlife and landscapes of our county and sub-region. This, together with increased funding for specific schemes sets a new framework for protection and improvement for local habitat and biodiversity.

## **Reducing Traffic Impact on Communities**

Congestion is worsening. During the 1990s, road traffic in Warwickshire was growing at around 2% per year, and it is generally expected to continue to rise.

The overwhelming majority of people in Warwickshire travel to work by car or van (significantly higher than nationally or regionally). We also have fewer school children walking to school than the regional average. However, rail use is increase in the south although declining in the north.

Over the next three years we will introduce measures to encourage more people to travel by healthier, lower carbon emitting, and congestion making, means.

## **Drivers and Challenges**

We need to slow the growth in:

- ◆ Waste collected from the County's households and public bodies
- ◆ Unnecessary car use and encourage cleaner less congesting alternatives.

And Raise

- ◆ The number of public and private bodies recycling materials
- ◆ The levels of environmentally friendlier products bought
- ◆ The profile of climate change and sustainable energy issues across Warwickshire
- ◆ The profile, and identify actions, to how we adapt to the climate change already occurring
- ◆ The profile of sustainable development with our future generations
- ◆ Actions and funding to protect and improve our natural assets

**To meet these drivers and challenges we have identified four key strategic approaches to progress work beyond the lifetime of this plan to achieve our 2020 vision. These being:**

## **Waste Minimisation & Recycling**

We will become a leader in the UK on Waste Minimisation and Recycling through the use of:

- Public involvement and awareness
- Developing partnership initiatives
- Education packages
- Collaboration and infrastructure improvements

## **Environment**

### **Climate Change**

We will develop common baseline assessments for energy usage with our strategic partners.

- The Sustainable Energy Strategy for Warwickshire will highlight where we as a county can contribute to both the regional and national agenda.
- We will encourage the use of sustainable construction standards and life cycle costing / whole life value systems.

### **Energy**

We will minimise the amount of energy consumed in the County and work towards a future using renewable energy sources.

We will successfully manage the transition from fossil fuel to renewable sources in a manner that meets the needs of the County.

### **Community Leadership**

We will demonstrate to others our commitment to improve our environment through developing partnerships within the County and by learning from the successes of other organisations. Partners will be expected to demonstrate to others what can be achieved through sustainable development and practices including the use of exemplar within our own organisations and activities.

## Environment

### What we will do in the next three years

Objective and Action	How we will know we have succeeded	Who will be involved
We will endeavour to reduce the amount of household waste handled by promoting waste prevention and waste minimisation	No increase from 2005 to 2008 of the kilograms of waste collected per capita population Reduce from 68.6% to 61.2% the percentage of total tonnage of household waste which has been landfilled	<b>Warwickshire County Council</b> , District Councils, Other organisations
LPSA2 – We will introduce new green waste collection schemes, encourage more recycling and stretch our recycling target by 8% across the county above our 2005-06 statutory countywide target	LPSA2* - Increase to 32% the total tonnage of household waste that is recycled by April 2008.	<b>Warwickshire County Council</b> , District and Borough Councils
As partners, we will reduce and recycle more of our own waste.	Establish a baseline in year 1 of the levels of tonnage of waste collected from partner sites and levels of total waste recovered for recycling collected from partner sites Year 2 & 3 set challenging targets to reduce the levels of tonnage of waste collected from partner sites Year 2 & 3 set challenging targets to increase the levels of total waste recovered for recycling from partner sites	<b>Warwickshire County Council</b> , Hospitals and PC Trusts, Colleges, District and Borough Councils, Private sector, Community and Voluntary Sector
We will develop a community leadership role to advocate the need to improve our environment: <ul style="list-style-type: none"> <li>◆ Through our future generation by further enhancing our “Eco-Schools” project</li> <li>◆ By identifying community leaders in the public, private and voluntary sectors to promote to businesses the need to reduce packaging</li> </ul>	40% of schools across Warwickshire to be engaged in the Eco-Schools project	<b>Warwickshire County Council</b> , ENCAMS, Education Business Partnership, HDRA, Warwickshire Energy Efficiency Advice Centre, Heritage Motor Centre, Warwickshire Wildlife Trust, Warwickshire Sustainability Commission

## Environment

Objective and Action	How we will know we have succeeded	Who will be involved
<p>We will reduce the level of carbon emission from our own travel by</p> <ul style="list-style-type: none"> <li>• Driver training</li> <li>• Procuring more energy efficient vehicles as vehicles are replaced / fleets extended</li> <li>• Using alternative fuels</li> </ul>	<p>Baseline ‘audits’ completed in year 1 to identify the levels of carbon emissions per mile travelled or litres of fuel consumed.</p> <p>Year 2 and 3 create stretch targets based on improvement from baseline</p>	<p><b>Warwickshire County Council,</b> Hospitals and Primary Care Trusts, Colleges, District and Borough Councils, Government Dept’s Private sector, Community and Voluntary Sector</p>
<p>LPSA2 - We will assess the level of carbon emissions from our own buildings and take action to reduce them</p>	<p>LPSA2* - Carbon Emissions baseline audits completed by each partner LPSA2* - No of action plans prepared / agreed LPSA2* – reduce by 6% CO<sub>2</sub> emissions from electricity consumption in Warwickshire County Council properties</p>	<p><b>Warwickshire County Council,</b> Hospitals and Primary Care Trusts, Colleges, District and Borough Councils, Government Dept’s, Private sector, Community and Voluntary Sector</p>
<p>We will increase the extent of key wildlife habitats</p>	<ul style="list-style-type: none"> <li>• Meet 80% of the targets to increase the extent of the 24 cited key wildlife habitats identified in the Local Biodiversity Plan</li> <li>• Increase number of Local Biodiversity Action Plan species champions</li> <li>• All Development Plans to contain biodiversity policies which are implemented and monitored</li> </ul>	<p><b>The Local Biodiversity Action Plan Steering Group</b> Warwickshire County Council, District and Borough Councils, Government Office for the West Midlands, English Nature, Warwickshire Wildlife Trust.</p>

## Environment

Objective and Action	How we will know we have succeeded	Who will be involved
We will protect the number of key wildlife species in Warwickshire	<ul style="list-style-type: none"> <li>• No further loss of Water Vole, Small Blue, Dingy Skipper and Black Poplar</li> <li>• Increase the Otter population by 25% in the Avon Catchment area</li> <li>• Increase the breeding pair population of Barn Owls by 25%</li> <li>• To have one breeding pair of Bittern in Warwickshire</li> <li>• All land management grant schemes to include biodiversity factors</li> <li>• Increase number of Local Biodiversity Action Plan species champions</li> <li>• All Development Plans to contain biodiversity policies which are implemented and monitored</li> </ul>	<p><b>The Local Biodiversity Action Plan Steering Group</b>, Warwickshire County Council, District and Borough Councils, Government Office for the West Midlands, English Nature, Warwickshire Wildlife Trust, Department of Environment, Food and Rural Affairs</p>
We will reduce the impact of traffic by encouraging use of public transport, cycling and walking	Public transport, walking and cycling improvements and targets implemented in line with the Local Transport Plan (2)	<p><b>Warwickshire County Council</b>, Bus and Train operators, Sustrans, District and Borough Councils</p>
We will reduce the impact of traffic in town centres and villages through <ul style="list-style-type: none"> <li>◆ Parking initiatives in towns</li> <li>◆ Traffic management and road improvements in towns and villages</li> </ul>	<p>Park and ride provided for Stratford, Warwick and Leamington Spa by 2008</p> <p>Decriminalisation of parking implemented countywide by 2008</p> <p>Traffic management and road improvement schemes implemented in line with the Local Transport Plan (2)</p>	<p><b>Warwickshire County Council</b>, District and Borough Councils</p>
We will improve air quality, in areas designated as air quality management areas (AQMA), by achieving reductions in pollution from road traffic.	Level of pollutants in the air reduced in line with the Local Transport Plan (2)	<p><b>Warwickshire County Council</b>, District and Borough Councils, Highways Agency.</p>



## Community Safety

***Our Vision is to improve community safety and reduce the risk of harm for all those who live, work and visit Warwickshire.***

### **Warwickshire Now**

#### **Context**

This Plan focuses on areas where value can be added by countywide working on Community Safety issues. It is recognised that most community safety work takes place through Crime and Disorder Reduction Partnerships at district level. In order to identify what is appropriate to include in the Plan we have applied the following test. To be included actions must

- Be a priority for change (for all or most of the county), and
- Be something where value can be added by countywide partnership working.

Therefore the Plan does not cover all the existing areas of action across the county. It does not include key activities such as action against domestic violence and business crime as they are already well established activities.

#### **Community Wellbeing**

Recent studies have shown that more than 80% of Warwickshire residents are happy with their neighbourhood as a place to live. A much smaller proportion, 7% are dissatisfied.

#### **Crime**

Warwickshire is one of the safest places to live, and crime levels are low compared to regional and national averages. Although there are some variations in crime levels across Districts and Boroughs in Warwickshire, all five have crime rates below both the regional and national levels.

Fear of crime and disorder is one of the most important factors influencing the quality of life of residents in Warwickshire. Fear of crime is generally higher in the north of the County, and geographically the fear of crime matches fairly closely with the levels of actual crime. However, the fear of crime remains disproportionately higher than crime itself.

Locally identified crime priorities in Warwickshire include anti-social behaviour and 'low level' crime and disorder. Problems of nuisance youths, vandalism, and alcohol-related disorder affect whole communities rather than individuals and have a significant impact on perceptions of safety.

Crime is tackled in every local area by Crime & Disorder Reduction Partnerships (CDRPs) – a combination of police, local authorities and other organisations and businesses who have joined together to develop and implement strategies for tackling crime and disorder on the local level. This work is supported and supplemented by countywide working where that can add value.

An effective approach to tackling crime and disorder needs to include three types of action:

- To prevent and deter crime
- To catch and convict criminals
- To rehabilitate and resettle victims and offenders

## Community Safety

The Police are clearly the key agency for catching and convicting criminals, but other partners have a vital role to play particularly on the prevention and rehabilitation strands.

### **Road Casualties**

The actual number of deaths and serious injuries caused on our roads is declining. However there are significant differences in the number of casualties amongst different age groups. Casualty numbers also vary across Warwickshire, with the highest number of casualties being in the Stratford area.

### **Fires**

The number of injuries in accidental dwelling fires per person in Warwickshire is consistently below the national average. However accidents still happen with the highest injury totals being within the 0-10 and 21-40 age bands. The majority of accidental fires in dwellings are preventable. The focus for us, through the implementation of the Fire Authority's Integrated Risk

Management Plan (IRMP) is to reduce the risk, incidence, and effects of fire and non-fire emergencies.

### **Drivers and challenges**

- Preventing crime occurring
- Reducing the risks to individuals becoming involved in crime.
- Reducing the impact persistent offenders have on crime
- Rehabilitating and resettling offenders to reduce the rates of re-offending
- Reducing anti-social behaviour
- Reducing the use of illegal drugs
- Reducing the influence of alcohol on crime and the impact that this has on communities.
- Reducing road traffic incidents especially in the context of increasing traffic.
- Reducing the number of fires and non-emergencies, including deliberate small fires and vehicle fires, and reducing the number of deaths and injuries caused by fires.

# Community Safety

## What we will do in the next three years

Objective and Action	How we will know we have succeeded	Who will be involved
<p>We will reduce the fear of crime and improve people’s feeling of safety in their communities, by identifying what causes people to be fearful of crime and create interventions to counteract this fear.</p>	<p>By March 2008 we will have 6% reduction in the percentage of residents worried about:</p> <ul style="list-style-type: none"> <li>- Burglary (including distraction burglary)</li> <li>- Violent Crime and</li> <li>- Vehicle Crime.</li> </ul> <p>(As identified in the annual public satisfaction survey)</p>	<p><b>Warwickshire Community Safety Partnership and Drug Action Team</b> and local Crime and Disorder Reduction Partnerships comprising, Warwickshire Police, Warwickshire County Council, District and Borough Councils, Primary Care Trusts and the Probation Service</p>
<p>LPSA2 – We aim to divert young people from the potential of crime through targeting vulnerable young people and providing appropriate support through a Youth Inclusion and Support Panel (CHARM); And, Reduce the number of young offenders who re-offend within 12 months. By providing direct support to young people involved in offending and supporting those at risk of offending.</p>	<p>We will reduce the number of first time entrants to the youth justice system by 5% each year from 780 in 2004 to 636 in 2008</p> <p>LPSA2* We will reduce the number of young people re-offending by 5% each year</p>	<p><b>Youth Offending Team, Police,</b> Warwickshire County Council, District and Borough Councils, Primary Care Trusts, through the local Crime and Disorder Reduction Partnership</p>

## Community Safety

Objective and Action	How we will know we have succeeded	Who will be involved
<p>LPSA2 - We will reduce crime particularly focusing on burglary dwelling, vehicle, violent and criminal damage crimes. By:</p> <ul style="list-style-type: none"> <li>◆ Targeting priority crimes in hot spot areas.</li> <li>◆ Focusing on persistent and priority offenders providing an intensive programme of support to individuals</li> <li>◆ Targeting drugs related crime</li> <li>◆ Focusing on alcohol fuelled violence. Working together with partners on licensing, and policing, to reduce the role alcohol plays in crime.</li> </ul>	<p>By March 2008 we will LPSA2* – 16.75% reduction in</p> <ul style="list-style-type: none"> <li>- Violent crime,</li> <li>- Vehicle crime and criminal damage</li> <li>- Burglaries.</li> </ul> <p>By March 2008 we will reduce total recorded crime in Warwickshire by 15% from 46,661 to 33,131.</p> <p>By December 2005 we will develop a set of performance indicators to measure the reduction in Persistent and Priority offenders (PPOs) re-offending figures. Targets will then be set to measure future performance.</p> <p>By 2008 we will increase from 881 (2003-04 baseline) to 1,500 the numbers of drug users engaged in drug treatment.</p> <p>By 2008 68% of drug users will be retained in treatment for more than 12 weeks or more</p> <p>By 2008 300 young people with complex needs will have been provided with treatment through effective multi agency care co-ordination.</p> <p>By 2008 achieve a 16.75% reduction in the level of violent crime in public places</p>	<p><b>Warwickshire Community Safety Partnership and Drug Action Team</b> The Probation Service, Supporting People Partnership team Local Crime and Disorder Reduction Partnerships</p>

## Community Safety

Objective and Action	How we will know we have succeeded	Who will be involved
We will reduce the number of casualties on our roads	Casualties have been reduced in line with LTP2 targets.	<b>Warwickshire County Council</b> , Warwickshire Casualty Reduction Partnership, Primary Care Trusts, Warwickshire Police
We will provide a safer environment for vulnerable road users through <ul style="list-style-type: none"> <li>◆ Provision of safer routes to school</li> <li>◆ Improved facilities for pedestrians and cyclists</li> <li>◆ Implement appropriate speed limits in villages</li> </ul>	That the targets for the below, identified in the Local Transport Plan (2) are met <ul style="list-style-type: none"> <li>- The number of route to schools improved</li> <li>- Amount of new facilities provided e.g. number of pedestrian crossings</li> <li>- 30mph speed limits achieved in villages</li> </ul>	<b>Warwickshire County Council</b> Warwickshire Schools Warwickshire Police District and Borough Councils
LPSA2 – We will reduce the number of deliberate small fires and vehicle fires – through education, promotion, and other preventative actions.	LPSA2* - 50% reduction of deliberate small fires LPSA2* - 55% reduction of deliberate vehicle fires LPSA2* - 25% reduction of deliberate property fires  Contribute to the national target of reducing the number of accidental fire-related deaths in the home by 20% (averaged over the eleven years to March 2010)	<b>Warwickshire County Council Fire and Rescue</b> West Midlands Regional Management Board Police, Crime and Disorder Reduction Partnerships.
We will develop an integrated locality based preventative service to prevent harm to children	Proposals made by April 2006	<b>Warwickshire Children and Young People’s Strategic Partnership Board</b>

## Health and Wellbeing

***Our Vision is for: Working together to widen opportunities to achieve and maintain the best possible health and well-being for all, while focusing on those that are socially and economically disadvantaged and experience poor health.***

### Warwickshire Now

People in Warwickshire are living longer and this is reflected in the falling mortality – about a quarter lower in 2002 than 1993. The main reason for the fall has been a striking reduction in deaths due to circulatory diseases and cancers – the main two causes of death.

We do not have information over long periods on how people feel about their health, but the 2001 census gave a snapshot: 8.8% of the population of England reported that their health had been “not good” in the previous 12 months. For all district and unitary authorities, the range was 4.5 to 17.2%. In Warwickshire the range was 6.7 to 9.6% - from below to just above the England average.

The general improvement and comparative good figures overall mask some noticeable inequalities within Warwickshire. For example of the ten wards with the highest cited “not good” health percentages, seven were in Nuneaton and Bedworth, two in North Warwickshire, and one in Rugby. Of the ten with the lowest percentages, four were in Stratford on Avon, and three each in Rugby and Warwick.

There are also local variations in health within each district. Every District has at least one ward in the top quarter nationally citing that they were of “not good” health.

Overall, health in Warwickshire compares well with the rest of England, and is improving. There are still wide variations however, both across the county as a whole, and more locally within each district. There is not yet any evidence that these inequalities are being reduced, it is therefore vital that health improvement activities are targeted to make an impact on reducing health inequalities. .

### **What else we are doing**

New developments and approaches to aid healthy living are being announced all the time and we have a duty to raise people’s awareness of these as efficiently and effectively as possible. New ideas about the benefits of participating in cultural activities to relieve stress and getting this message across through new partnerships and one stop shop access to information is a good example of this approach.

We are also collectively working to prepare an Alcohol Harm Reduction Strategy signaling our collective partnership commitment to the importance of dealing with alcohol related issues. This will lead to initiatives being developed and implemented throughout the life of this Plan.

A comprehensive Review of Older People’s services has already identified a number of key priority areas. The review will lead to

## Health and Wellbeing

significant service changes over the period which will impact on the health and independence of older people.

As well as undertaking a number of actions to aid people of a working age with mental health needs, we will also aim to develop actions to address the needs of younger and older people.

The “Supporting People” programme aims to provide a better quality of life for vulnerable people by helping them to live more independently. The Supporting People programme provides housing related support to help prevent problems that can often lead to hospitalisation, institutional care, or homelessness. They can also help people leaving institutional environments to make the transition to independent living.

### **Drivers and Challenges**

The Plan will continue to support the national targets identified in “*Saving Lives – Our Healthier Nation*”. The recent Government published Public Health White Paper “*Choosing Health: making*

*healthy choices easier*” and “*Tackling Health Inequalities – A Programme for Action*” have further informed these priorities and actions, together with local research, knowledge and in consultation.

In line with the national picture the health inequality gap in Warwickshire is continuing to widen. Life expectancy is lowest in Nuneaton & Bedworth and North Warwickshire and is lower than both the national and regional averages. The Life Expectancy gap for both men and women between Nuneaton & Bedworth and the average of the rest of the County is continuing to rise.

Work is underway across Warwickshire to seek to reverse this trend but clearly more needs to be done. There are two Healthy Living Networks, three Sure Start projects, regeneration schemes and many joint initiatives working directly on health related initiatives. We will seek to ensure the on-going sustainability of these projects. It is also recognised that improving educational attainment and employment opportunities, improving the environment, housing and transport all have a significant part to play in this.

# Health and Wellbeing

## What we will do in the next three years

**Underpinning all our priorities we will aim to Tackle Health Inequalities To support & develop local communities particularly those that are socially and economically disadvantaged and experience poor health. By:**

- Targeting activity in areas of greatest need
- Working in partnership with other agencies and theme groups to maximise benefits
- Supporting and developing local communities

**Promoting good Mental & Physical Health & Wellbeing: To enable the people of Warwickshire to make informed, healthier lifestyle choices.**

Objective and Action	How we will know we have succeeded	Who will be involved
<p>LPSA2 – We will encourage &amp; promote healthy lifestyles: By:</p> <ul style="list-style-type: none"> <li>• Promoting healthy eating.</li> <li>• Encourage &amp; promoting physical activity</li> </ul> <p>Develop “health advisor” to target vulnerable individuals / groups in the identified communities.</p> <p>Encouraging more walking and cycling for leisure, journeys to and from schools and work and for other short distance trips.</p>	<p>.PSA2* Reduce health inequalities by reducing deaths from Circulatory diseases in the area of highest mortality – Nuneaton &amp; Bedworth by achieving a 9% reduction in rate of deaths in Nuneaton &amp; Bedworth from circulatory disease (13 deaths)</p> <p>80% of actions implemented from the “action plans” of the Food for Health Group and the Physical Activity Group</p> <p>Local Transport Plan outcomes met</p> <p>Promote all healthy lifestyle and eating initiatives on local authority websites</p>	<p><b>Warwickshire County Council</b>, Nuneaton and Bedworth Leisure Trust, Healthy Living Network, Primary Care Trust <b>Food for Health Group</b> comprising, Primary Care Trusts, Warwickshire County Council, District and Borough Councils, and others. <b>Physical Activity Group</b>, comprising, Warwickshire County Council, Sport England, District and Borough Councils, University of Warwick, Community and Voluntary Sector and others.</p> <p><b>Warwickshire County Council</b>,</p> <p><b>Warwickshire On-line Partnership</b>, comprising District and Borough Councils, Warwickshire County Council</p>
<p>We will assist in undertaking awareness raising of mental health issues and supporting those with mental health needs.</p>	<p>100% of the recommendations arising from the partnership review of mental health due to be completed by 2008 are implemented.</p>	<p><b>Warwickshire County Council and Primary Care Trusts</b>, Supporting People Team, District and Borough Councils, Community and Voluntary Sector</p>



## Health and Wellbeing

Objective and Action	How we will know we have succeeded	Who will be involved
We will promote and support organisations to become smoke free environments	Increase the number of organisations in Warwickshire with a National Clean Air Award to 200	<b>Smoke Free Warwickshire</b>
We will promote and provide smoke free environments within the public sector.	All enclosed public places and workplaces to be smoke free by April 2006. All Local Authorities and Health Trusts in Warwickshire will have achieved the National Clean Air Award Standards. All NHS Trusts to be totally smoke free sites by end 2006. (There may be limited exceptions for Mental Health Trusts)	<b>All local authorities and NHS Trusts in Warwickshire, Smoke Free Warwickshire</b>
We will, through implementing preventative and promotional measures, aim to reduce the negative effect of air quality on people's health.	90% of targets in the health and air quality review, achieved.	<b>Primary Care Trusts, Warwickshire County Council, District and Borough Councils, Highways Agency.</b>
LPSA2 – We will develop a network of community champions to raise awareness of people rights to benefits and signpost where appropriate.	LPSA2* - Financial gain to target families of 4:1 LPSA2* - Additional 640 clients supported annually in accessing their full range of benefits	<b>Community and Voluntary Sector (welfare rights groups)</b>

### **Addressing the Impact of the Aging Population: To support older people in maintaining their health and quality of life.**

Objective and Action	How we will know we have succeeded	Who will be involved
We will work with older people to reduce the number and severity of falls, accidents, and fires.	Achieve the National Service Framework for Older People Standard 6 targets Provide 5 rolling falls advice and activity programmes per annum.	<b>Age Concern Warwickshire, Warwickshire County Council, Primary Care Trusts, Community and Voluntary Sector, Home Improvement Agencies,</b>
We will help older people to obtain additional income from Social Security benefits by more effective joint work.	Action plan agreed in 2005/06 between Warwickshire County Council and Pension Service and implemented in 2006/07.	<b>Warwickshire County Council, District and Borough Councils, Department of Works and Pensions and Community and Voluntary Sector</b>

## Health and Wellbeing

Objective and Action	How we will know we have succeeded	Who will be involved
LPSA2 – We will provide improved home care services to older people in Warwickshire	LPSA2* – We will measure increased satisfaction of users of home care and direct payments through the Government’s Quality of Life Survey (Improvement targets under negotiation)	<b>Warwickshire County Council,</b> Independent sector care providers.
We will increase participation in health promoting & screening activities. By: <ul style="list-style-type: none"> <li>• Active Age Programmes</li> <li>• Flu Immunisations</li> </ul>	Meet the National Service Framework for Older People Standard 8 targets  15 community activity groups developed annually. 22 health promotion talks provided to older people groups a year. 70% of older people immunised with year on year improvement.	<b>Age Concern Warwickshire,</b> Primary Care Trusts, Voluntary Sector, Local District and Borough Health Improvement and Wellbeing groups  <b>Primary Care</b>
We will ensure that suitable accommodation and housing support including care and repair projects are available to enable older people to live in their own homes	Complete 100% of the actions identified in the Supporting People Five Year Strategy due to be completed by 2008	<b>Supporting People Team,</b> Warwickshire County Council, District and Borough Councils, Primary Care Trusts.
LPSA2 – We will modernise Day Services for people with learning disabilities by providing increased life opportunities at smaller sites located within the communities that they serve.	LPSA2* – We will develop a survey methodology with the Dept Health to measure the increased satisfaction and opportunities afforded to our users (Improvement targets under negotiation)	<b>Learning Disability Partnership Board</b> Department of Health

## Health and Wellbeing

### ***Promoting Healthier Lifestyles of Children and Young People – To encourage children and young people to live healthier lifestyles providing a sound basis for a healthier and happier adult life***

Objective and Action	How we will know we have succeeded	Who will be involved
<p>We will promote healthy lifestyles for young people through expanding and our Healthy Schools programme and creating an integrated programme of professional development and network support levels for attainment in PE</p>	<p>All schools with 20% free school meals engaged in the Healthy Schools Programme            All schools either working towards or having achieved Healthy School Status.            All 4 –6 year olds receiving fruit through subsidised schemes            All four School sports partnerships nationally accepted and funded            85% of pupils access a minimum of 2 hours high quality PE, schools sports, and physical activity.</p>	<p><b>Warwickshire County Council</b>, Sports colleges, School sport partnerships, schools.</p>
<p>LPSA2 – We will establish Early years project to help parents access a range of quality health services and to experience good relationships with their children.</p>	<p>LPSA2* Reduction by 14% the number of children entering reception class with no preschool experience.</p>	<p><b>Children’s and Young People Partnership Board</b></p>
<p>We will support the development and implementation of the Warwickshire Teenage Pregnancy Strategy action plan to reduce the numbers of unwanted teenage pregnancies.</p>	<p>Reduce the number of under 18 conceptions in Warwickshire from 372 in 1998 to 279 in 2006 to ensure that we are on target to reach the national target of 2010            Reduce the risk of social exclusion of young parents with 60% of 16-19 year old mothers in education, employment, and training by 2010.</p>	<p><b>Warwickshire Teenage Pregnancy Partnership Board.</b></p>
<p>We will ensure that young people and their families have access to an improved and comprehensive Child and Adolescent Mental Health Service (CAMHS)</p>	<p>A 10% increase in direct contacts by specialist CAMH professionals.            A focussed increase in contacts with children in special circumstances or vulnerable groups of children.            An effective mechanism has been established to ensure consultation with children and young people.            Improvement in Warwickshire’s Performance Assessment Matrix for a Comprehensive CAMHS.</p>	<p><b>Children’s and Young People Partnership Board</b></p>

## Health and Wellbeing

### Access to services

Objective and Action	How we will know we have succeeded	Who will be involved
<p>We will provide improved community information and access to services</p> <ul style="list-style-type: none"> <li>• Easier access to information for the public regarding services available</li> </ul>	<p>Implemented by December 2005.</p>	<p><b>Warwickshire On-line Partnership (WOLP)</b> comprising District and Borough Councils, Warwickshire County Council</p>
<p>We will improve access to jobs and essential services e.g. GP surgeries, food shops, and leisure services. By improving provision of public and community transport and directing services to the right locations.</p>	<p>Accessibility to jobs and services improved in accordance with the Local Transport Plan (2) Accessibility Strategy</p>	<p><b>Warwickshire County Council</b>, Primary Care Trusts, Bus Operators, District and Borough Councils, Community and Voluntary sector.</p>
<p>We will improve accessibility of the highways for people with physical or sensory impairments and for others with special requirements including</p> <ul style="list-style-type: none"> <li>◆ Upgrading pedestrian crossings</li> <li>◆ Provision of improved bus stop infrastructure</li> <li>◆ Dropped kerbs.</li> </ul>	<p>Improved upgrading road crossings for the blind Upgrading bus stops and buses for easy access onto buses by mobility impaired Local Transport Plan (2) targets met</p>	<p><b>Warwickshire County Council</b>, Bus Operators, Community and Voluntary Sector (Disabled Groups)</p>
<p>We will pilot a scheme to enhance multi-agency provision of information to older people. Which will improve access to services by screening individuals for their service needs and consideration of their risk in their home.</p>	<p>By 2006 4 projects under pilot conditions reviewed and evaluation Access to organisations customer base Co-operative screening tool in use.</p>	<p><b>Warwickshire County Council</b>, Fire and Rescue, Department of Works and Pensions, Rugby Primary Care Trust</p>

## Health and Wellbeing

### Community Inclusion

Objective and Action	How we will know we have succeeded	Who will be involved
<p>We will through the Warwickshire Race Equality Partnership aim to strengthen community cohesion</p>	<p>Undertake a county wide community and voluntary sector conference in December 2005 to increase community cohesion in Warwickshire</p>	<p><b>Warwickshire County Council,</b> District and Borough Councils, Community and Voluntary Sector</p>
<p>We will improve the links between the various countywide and district community forums by developing a Countywide Local Authority / Voluntary Sector Group to e.g.</p> <ul style="list-style-type: none"> <li>- More effectively use the work and knowledge of the various countywide and district community of interest forums (e.g. youth council, disability forum, older people's forum etc), and develop links between these forums and the County Strategic Partnership</li> <li>- Investigate streamlining of funds available to voluntary and community groups (e.g. single application form which can act as a gateway to multiple funds) from advice gained from district based funding forums</li> </ul>	<p>Increase in number of people engaged in voluntary and community activity</p> <p>Increase the ease the voluntary sector has in accessing funding opportunities</p> <p>Create a more coherent understanding of community needs and how they might best be addressed</p>	<p><b>Warwickshire County Council,</b> District and Borough Council, Community and Voluntary sector</p>

Published by: Warwickshire County Council on behalf of Warwickshire Strategic Partnership  
Publication Date: October 2005  
Department: Chief Executive's  
Contact: 01926 412587