

Health and Wellbeing Board

Health and Wellbeing Place-based Partnerships

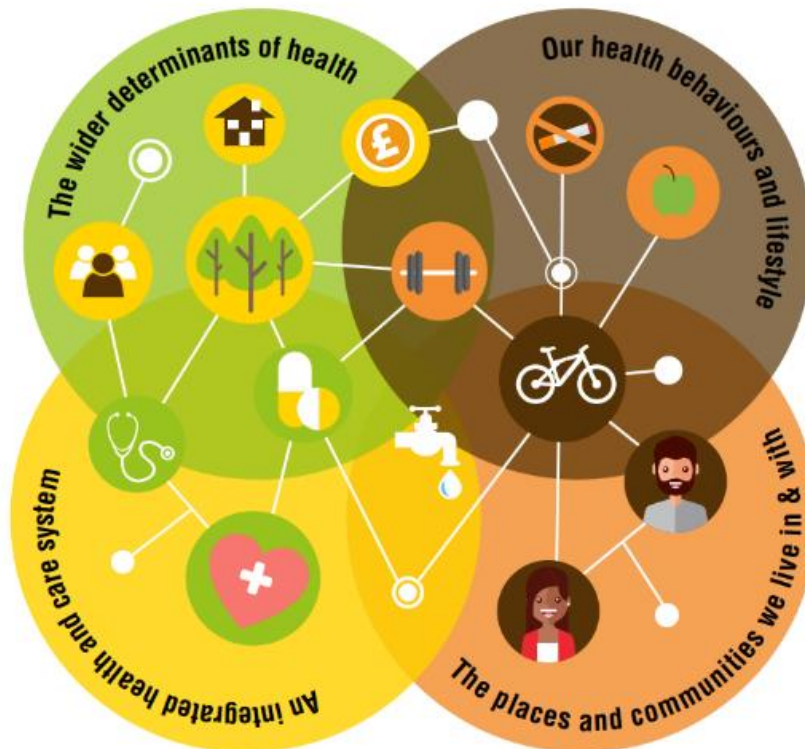
7 July 2021

Recommendation

The Health and Wellbeing Board notes and supports the progress made by the three Health and Wellbeing partnerships in Warwickshire

1. Background

- 1.1. The Health and Wellbeing Partnerships (HWP) in the three places of Warwickshire North, Rugby and South Warwickshire are critical to the successful delivery of the Health and Wellbeing Strategy, the new Coventry and Warwickshire Health and Care Partnership and the place-based Joint Strategic Needs Assessment (JSNA).
- 1.2. We are working on a population health framework for Warwickshire to underpin everything we do as a health and wellbeing system to achieve our long-term vision for change



- 1.3. We have identified three initial priorities where we can make a tangible difference in the short-term by working together in partnership. We have

chosen these priorities because we know that they are areas where we could do better. The first two priorities were identified through the JSNA findings and workshops with senior leaders and remain relevant now. Reducing health inequalities has long been a priority underpinning our work and now deserves more prominence due to the ‘double-impact’ of the pandemic. The three priorities within the Health and Wellbeing Strategy are:

- Help our children and young people have the best start in life
- Help people improve their mental health and wellbeing, particularly around prevention and early intervention
- Reduce inequalities in health outcomes and the wider determinants of health.

1.4. Progress against each priority is shown in appendix 1.

2. Financial Implications

2.1 None.

3. Environmental Implications

3.1 None.

4. Next steps

4.1 A forward plan of items for each partnership is being developed through the Place Coordination Group.

Appendices:

Appendix 1: Health and Wellbeing Partnerships

	Name	Contact Information
Report Authors	Yasser Din, Emily Van de Venter, Duncan Vernon	yasserdin@warwickshire.gov.uk, emilyvandeventer@warwickshire.gov.uk, duncanvernon@warwickshire.gov.uk
Director of Public Health	Dr Shade Agboola	shadeagboola@warwickshire.gov.uk
Director	Nigel Minns	nigelminns@warwickshire.gov.uk
Lead Member	Cllr Bell	margaretbell@warwickshire.gov.uk

The report was circulated to the following members prior to publication:

Other members: Councillors Bell, Drew, Golby, Holland and Rolfe.

Appendix 1: Health and Wellbeing Partnerships

Priority 1: helping our children and young people have the best start in life		
	Outline of activity	Progress update
North Place	<p>As part of the Wider Determinants of Health priority, we will drive to address health inequalities for children in year six who are overweight or obese.</p> <p>Furthermore, Warwickshire North Place has set up programmes of work around infant mortality rates, mental health in schools, and suicide rates in 10+ year olds.</p>	<p>A Task and Finish Group has been established to investigate data behind rates of infant mortality in Warwickshire North and to scope programmes of work to address this.</p> <p>An expression of interest has been submitted for mental health in school teams.</p>
Rugby Place	<p>Engagement session on the Family Poverty Strategy.</p> <p>Self-harm in young people is a key priority for Rugby place and was the theme of a mental health and wellbeing partnership meeting this quarter.</p>	<p>Partners given the opportunity to feed into the strategy development and partners agreed to work with WCC colleagues who led on the strategy to deliver on the priorities at Rugby place.</p> <p>Presentations from partners from WCC, CWPT were well received. The Rugby place delivery group are to follow up with actions at place.</p>
South Place	<p>Engagement session on the Family Poverty Strategy.</p>	<p>Partners given the opportunity to feed into the strategy development.</p>

Priority 2: Help people improve their mental health and wellbeing, particularly around prevention and early intervention in our communities		
	Outline of activity	Progress update
North Place	<p>Launch of Creative Health – Arts on Referral schemes.</p> <p>Partners supported Muslim community to have a safe Ramadan.</p> <p>Partners involved in supporting surge testing in Nuneaton (Abbey and Wembrook Wards).</p>	<p>To be promoted at future meetings.</p> <p>Mosque distributing Lateral Flow Test Kits, WCC support to improve ventilation and Covid-Secure arrangements. No known cases linked to Mosque attendance during Ramadan period.</p> <p>Surge testing underway, good uptake and response by local community.</p>
Rugby Place	<p>Launch of Creative Health – Arts on Referral schemes</p> <p>Mental health and wellbeing was theme of the meeting and partners presented updates across the system.</p> <p>Compassionate communities Rugby has launched the new website - compassionaterugby.co.uk.</p>	<p>To be promoted at future meetings.</p> <p>Presentations were well received and follow up actions through the place delivery group. Engagement with HCP MH lead to plan translation of strategy at Place.</p> <p>Website is being communicated widely to encourage people to get involved or access support.</p>
South Place	<p>Engagement sessions on a Mental Health Needs Assessment, an Alcohol Health Needs Assessment and a Domestic Abuse Needs Assessment.</p> <p>Promotion of Wellbeing for Life Campaign</p> <p>On-going updates from CWPT on Access Hubs and Community Transformation Programme.</p> <p>Launch of Creative Health – Arts on Referral schemes</p>	<p>Partners given the opportunity to feed into needs assessment and population engagement processes.</p> <p>Awareness raising to harness partnership involvement.</p> <p>Partners kept aware of developments and opportunities to strengthen links with wider services and support.</p> <p>To be promoted at future meetings</p>

Priority 3: Reduce inequalities in health outcomes and the wider determinants of health		
	Outline of activity	Progress update
North Place	<p>Homelessness Strategy launched.</p> <p>As part of the Warwickshire North Place Plan, four priority areas for addressing health inequalities have been identified: smoking cessation, obesity, mental health, learning disability, and end of life care.</p>	<p>Promoted to Partnership.</p> <p>Three cohorts have been identified for the social isolation programme of work. These include low income/deprived, older and male, and carers. Social Prescribers in PCNs are addressing social isolation by engaging with carers.</p>
Rugby Place	<p>Homelessness Strategy launched. Homelessness is a priority for Rugby place.</p> <p>Director of public health annual report presented to partners exploring impact of COVID-19 on health inequalities.</p>	<p>Homelessness sub-group with key leads around homelessness are working together to implement improving lives of people who are homeless at place. Progress includes:</p> <ul style="list-style-type: none"> • Further referral routes to be agreed and cascaded out to referral agencies. • Improving access to GP services by linking in with work done by Healthwatch Warwickshire. • Understanding personal resilience and personal development amongst the cohort to proactive and prevention strategy. <p>Report was well received and agree to deliver on recommendations as per HWB endorsement – read the report online – warwickshire.gov.uk/publichealthannualreport.</p>

	<p>COVID-19 and BAME work programme was presented to the partnership.</p>	<p>Benn Partnership in Rugby has been commissioned to engage with communities, countywide community development officers have been appointed and funding opportunities are going to be available for organisations/groups to bid</p>
<p>South Place</p>	<p>Homelessness Strategy launched.</p> <p>Ongoing partnership support to the Fred Winter Centre development.</p> <p>Overview of Covid-19 recovery survey findings.</p> <p>Initiated digital inclusion pilot for refurbishing donated laptops (in partnership with Coventry and Warwickshire Co-operative Development Agency).</p>	<p>Promoted to Partnership.</p> <p>Delay in progress caused by the pandemic, WCC funding secured for roll-over into 2021/22.</p> <p>Findings shared to feed into South response and recovery plans.</p> <p>Funding secured for Countywide process, priority given to people with mental health diagnoses and families.</p>

Updates on place-based delivery of JSNA action plans/Place Priorities (not captured in HWB Priorities)		
	Outline of activity	Progress update
North Place	<p>The overarching themes from the JSNA in Warwickshire North include:</p> <ul style="list-style-type: none"> • Deprivation – home ownership, child poverty, financial inclusion, and regeneration (planning and transport). • Mental Health and Wellbeing • Children and Young People – early years, education, and young mothers. • Living with Long Term Conditions – self-management, CVD, COPD, support for families, presenting late, and screening uptake. • Ageing Population • Access to Services • Homelessness and Vulnerable Adults 	<p>The JSNA themes have been used to identify key themes for Warwickshire North Place, including:</p> <ul style="list-style-type: none"> • Long Term Conditions – the priorities of work include MSK, Heart Failure, Blood Pressure, Diabetes and COPD. Key achievements include the establishment of a multi-disciplinary diabetes foot clinic; a COPD telehealth service in care homes; and MSK First Contact Practitioners service in four PCNs. • Maternity, Children, and Young People – the priorities include maternal mental health, suicide in 10+ year olds, and infant mortality rates. • Wider Determinants of Health – there is a focus on homeless support, mental health, and learning disability. Key achievements include PCN recruitment of mental health link workers and mental health practitioners. Also, one social prescribers dealing with social isolation by engaging with carers. <p>Community Capacity and Rapid Response – the priorities include telehealth/digital services; falls prevention; frailty; and enhanced care home offers. Overall this priority aims to improve access to services by providing joined-up care in the community with care available in hospital settings. We are in the final stage of agreeing the recruitment of Physician Associates into General Practice to support frailty.</p>

Rugby Place	Tobacco control – smoking is priority for Rugby place.	Updates have been presented to the Rugby place delivery group including – creation of a Coventry and Warwickshire wide action plan to address the national ambitions to create a smoke free generation by 2030. Developed a position statement on the current picture of tobacco control across Coventry and Warwickshire. Set up a Coventry and Warwickshire wide tobacco control meeting including public health leads and commissioners and a draft tobacco control plan is being created which will also include addressing the NHS Long Term Plan priorities around smoking cessation. The next TC partnership meeting in June will focus on the NHS Long Term plan priorities and key colleagues from across the system have been invited to attend.
South Place	<p>South Health and Wellbeing Group workshop on Climate Change.</p> <p>On-going collaboration with Place Partners to support the pandemic response and recovery, key involvement of partners in Community Engagement, testing and vaccination workstreams.</p>	<p>Completed – links between programmes of work between DCs & WCC, and internal WCC collaboration, strengthened.</p> <p>Current focus on improving vaccination uptake among under-represented groups and joining up cross-organisational discussions on pandemic memorial plans.</p>