

Cabinet

22 November 2012

Bus Subsidy Task and Finish Group Final Report

Recommendation

That Cabinet consider the Communities Overview and Scrutiny Committee's report on evening bus subsidy and (a) support the first and second recommendations in its budget proposals for 2013/14 and (b) agree the third recommendation for an officer review of the new network 12 months after implementation.

1.0 Key Issues

- 1.1 Warwickshire County Council (WCC) reduced the Transport Operations budget by 45% as part of the 2011/12 budget. Following such a significant budget reduction, the level of financially supported services in the County was substantially affected.
- 1.2 Due to concerns from Councillors and representations from members of the public about changes to local bus services, the Communities Overview and Scrutiny Committee proposed that a Task and Finish Group was set up with a brief to scrutinise the impact of the service changes on users and propose solutions that could be considered as part of the budget setting for 2013/14.
- 1.3 Following the completion of the review, the Task and Finish Group identified three recommendations which aim to maintain the current level of bus services across the County and reinstate some evening subsidy to provide new rural and inter-urban bus routes on Friday and Saturday evenings.

2.0 Timescales associated with the decision and next steps

- 2.1 The report was considered by the Communities Overview and Scrutiny Committee on 14 November 2012.

CLLR JOHN WHITEHOUSE
Chair of Communities Overview and Scrutiny Committee

	Name	Contact Information
Report Author	Dave Abbott Cllr J. Whitehouse	daveabbott@warwickshire.gov.uk cllrwhitehouse@warwickshire.gov.uk
Head of Service	Greta Needham	gretaneedham@warwickshire.gov.uk

Strategic Director	David Carter	davidcarter@warwickshire.gov.uk
Portfolio Holder	Cllr David Wright	cllwright@warwickshire.gov.uk



BUS SERVICES TASK AND FINISH GROUP FINAL REPORT

CONTENTS

1.0 Introduction

- 1.1 Executive Summary**
- 1.2 Members and Contributors**
- 1.3 Evidence**
- 1.4 Dates and Timescales**

2.0 Overview

- 2.1 Background**
- 2.2 Rationale**
- 2.3 Objectives**

3.0 History of the Review

- 3.1 Community Impacts and Action Taken**
- 3.2 Proposal for New Evening Services**

4.0 Recommendations

5.0 Financial and Legal Implications

- Appendix A - Scrutiny Review Outline**
- Appendix B - Comparison of Bus Services 2011-12**
- Appendix C - Proposal for New Services**
- Appendix D - Scrutiny Action Plan**

1.0 Introduction

1.1 Executive Summary

- 1.1.1 Warwickshire County Council (WCC) reduced the Transport Operations budget by 45% as part of the 2011/12 budget; set at a meeting of Full Council on 15 February 2011¹. The budget reduction was phased in over five months, from May to September 2011. Following such a significant budget reduction, the level of financially supported services in the County was substantially affected.
- 1.1.2 Due to concerns from Councillors and representations from members of the public about changes to local bus services, the Communities Overview and Scrutiny Committee proposed that a Task and Finish Group was set up with a brief to scrutinise the impact of the service changes on users and propose solutions that could be considered as part of the budget setting for 2013/14.
- 1.1.3 Following the completion of the review, the Task and Finish Group identified three recommendations which aim to maintain the current level of bus services across the County and reinstate some evening subsidy to provide new rural and inter-urban bus routes on Friday and Saturday evenings.

1.2 Members and Contributors

- 1.2.1 The members of the Task and Finish Group were Councillors Martyn Ashford (Chair of the Task and Finish Group), Penny Bould, Richard Chattaway, David Johnston, Kate Rolfe, Chris Saint, and Ray Sweet.
- 1.2.2 During the course of the review, the Task and Finish Group met with Officers of WCC's Passenger Transport department and the Localities and Partnerships team. Members were supported by Officers from Democratic Services.

1.3 Evidence Used

- 1.3.1 In order to achieve an understanding of the review topic, the Task and Finish Group considered both primary and secondary evidence from a range of sources. This included:
 - a. WCC Passenger Transport Service Level Criteria
 - b. The Community Impact of Bus Service Reductions (2012) Dan Green
 - c. Communities OSC Minutes - 12 April 2012
 - d. Bus Services after the Spending Review (2011) House of Commons Transport Committee
 - e. Buses: Grants and Subsidies (2012) Louise Butcher

1.4 Dates and Timescales

The Task and Finish Group was commissioned following the Communities Overview and Scrutiny Committee (OSC) meeting held on 12 April 2012. The

¹ The full 2011/12 budget can be viewed here: www.warwickshire.gov.uk/previousbudgets

recommendations will be presented to Communities OSC on 14 November 2012 and referred to Cabinet on 22 November 2012.

2.0 Overview

2.2 Rationale

2.2.1 The purpose of the Task and Finish Group was to give Councillors the opportunity to scrutinise the impact of the service changes on users and propose solutions that could be considered as part of the budget setting for 2013/14.

2.3 Objectives

2.3.1 The objectives of the review were:

- To gain an understanding of community impacts arising from the service reductions made, and the steps already taken by officers to ameliorate these.
- To identify and cost improvements to services that would address community disadvantage, to provide an informed input into the 2013/14 budget setting process.

2.3.2 The Scrutiny Review Outline is attached as **Appendix A**.

2.1 Background

2.1.1 On 15 February 2011, Full Council took the decision to reduce Warwickshire County Council's passenger transport revenue support budget from £2.9 million to £1.6 million, a reduction of £1.3 million or 45%. The original proposal was to remove £1.65 million however £350,000 was subsequently put back into the budget so that several routes, including all Sunday bus services, could be retained. This decision included a blanket removal of all financial support for evening bus services.

2.1.2 Following the budget being agreed, the withdrawal of funding was effective from 1 April 2011. This meant that service revisions had to be implemented rapidly, with reductions being phased in between 31 May and 5 September 2011.

2.1.3 The revenue support budget is used to provide financial subsidy for services which operators do not consider to be commercially viable but are considered as being socially necessary.

2.1.4 Following the announcement of the bus service reductions in 2011, WCC received many letters, emails, and petitions stating their opposition to the proposals. Officers were contacted by every Warwickshire MP and almost all County Councillors; over 100 Parish and Town Councils have contacted officers by telephone, e-mail and letter; and thousands of telephone calls, emails and letters have been received from members of the public.

2.1.5 Since the reductions, Officers have undertaken a process of continual iteration to improve the situation for affected individuals and communities, to the extent that their

Warwickshire County Council
Overview and Scrutiny – Improving Services for the Community

current budget allows. The County Council has also worked very closely with bus operators throughout the process and in some cases operators have continued to run reduced services on a commercial basis.

3.0 History of the Review

3.0.1 During the review the Task and Finish Group focussed on the following two areas, in order to identify solutions that addressed members' concerns.

3.1 Community Impacts and Actions Taken

3.1.1 The community impact of bus service reductions was considered at a meeting of the Communities Overview and Scrutiny Committee held on 12 April 2012. At the meeting, a number of local members and members of the public wrote in or spoke to the Committee about concerns regarding services in their communities. Following the meeting, Officers were able to address the majority of concerns, excluding any issues related to the removal of evening services.

3.1.2 The Task and Finish Group requested an update to the comparison between bus services prior to April 2011 and the current network. The most recent version of this document is attached as **Appendix B**.

3.1.3 Despite significant budget reductions, every community in Warwickshire is still serviced with public transport in some form during the day. However, services reductions have meant a lack of choice of both services and amenities. Day time work routes have been retained but shopping routes to multiple towns have been cut down to one major area per community.

3.1.4 The removal of the subsidy for evening services was highlighted by both Councillors and Officers as a major issue. The removal of the evening bus subsidy has created an inequality of transport provision across the County, with rural areas being particularly affected. Many of the people affected by bus service cuts in rural areas work in the night time economy, such as shift workers, bar staff, and hospital staff.

3.1.5 A limited number of key routes, which were operating on a commercial basis on Mondays to Saturday evening prior to the decision to remove the evening bus subsidy, continue to be provided. These are listed in the table below:

12	Travel W Midlands	Leamington – Kenilworth – University – Coventry
16	Travel W Midlands	Coventry – Keresley
20	Travel W Midlands	Coventry – Bedworth
U1	Stagecoach	Sydenham – Leamington – University
48	Stagecoach	Coventry – Bedworth – Nuneaton
55-57	Stagecoach	Coventry – Bedworth – Nuneaton
90	Travel W Midlands	Coleshill – Water Orton – Birmingham

3.1.6 In response to contract terminations, Stagecoach took the decision to register replacement services on a commercial basis, on Friday and Saturday nights only. This decision was based on the fact that 80% of weekly passenger journeys are made on Friday and Saturday evenings. These routes were initially operated on a six month trial basis, but all continue to be operated.

The routes continuing to operate on Friday and Saturday evenings are:

G1	Stagecoach	Warwick – Leamington – Whitnash – Kineton
4	Stagecoach	Admirals Estate – Rugby – Brownsover

Warwickshire County Council
Overview and Scrutiny – Improving Services for the Community

18A	Stagecoach	Stratford – Wellesbourne – Warwick – Leamington
64	Stagecoach	Leamington – Southam – Rugby
67A	Stagecoach	Leamington – Lillington – Cubbington

3.1.7 The following evening services were completely withdrawn:

1	Stagecoach	Rugby – Southfields
3	Stagecoach	Rugby – Hillmorton
5B	Stagecoach	Nuneaton – Camp Hill
17A	Stagecoach	Nuneaton – Grove Farm – Arleys
X20	Johnsons	Stratford – Henley – Shirley - Birmingham
23	Johnsons	Stratford – Lower Quinton - Shipston
29	Johnsons	Stratford – Alcester – Bidford - Evesham
86	Stagecoach	Rugby – Long Lawford – Wolston - Coventry
118/9	Arriva	Tamworth – Kingsbury – Wood End – Hurley
765	Arriva	Nuneaton – Atherstone – Polesworth - Tamworth

3.1.8 Based on surveys of evening journeys, around 40,000 passenger journeys per year were made on Fridays and Saturday evenings on the services which were withdrawn.

3.1.9 The decision to remove all evening bus subsidy has prevented WCC from being able to provide the level of service mandated by its own service level criteria and take action to reduce transport inequality. Members recognised that reinstating the subsidy for evening bus services to 2010/11 budget levels² would be unrealistic, but removing the entire subsidy has damaged the ability of the Council to provide subsidised transport where it is most needed.

3.2 Proposal for New Evening Services

3.2.1 Given the information provided to members, it was clear that the area where the Task and Finish Group could have the most impact was the reintroduction of evening services. Evening services would help to support the night-time economy and local business, give residents access to a greater choice of amenities, and reduce transport inequality across Warwickshire.

3.2.2 Investment in public transport would support Warwickshire County Council's ambition to improve accessibility and transport options within the County. Effective public transport is also a key economic driver and would support the Council's Going for Growth agenda.

3.2.3 The Task and Finish Group asked Officers to present proposals for a new set of evening bus services on Friday and Saturday evenings. The proposal detailed in **Appendix C** is for an innovative new set of evening services that would greatly enhance the existing network. The routes are focussed on rural and interurban services and incorporate both the communities that showed the greatest footfall from the previous evening network and new settlements.

3.3.4 The new subsidy would provide four additional vehicles on Friday and Saturday nights that would directly serve 19 communities. A draft timetable of the new routes

² The cost of reinstating pre-April 2011 evening services Monday to Saturday would be £245,000 per year.

and a map with the existing commercial services highlighted in blue and the new routes highlighted in red, is attached at **Appendix C**.

- 3.3.5 If the new routes were successful then there is potential for them to be handed over to the operator to run on a commercial basis.
- 3.3.6 The Task and Finish Group recommend that officers review the new network twelve months after it is implemented and update the Communities Overview and Scrutiny Committee on its performance and effectiveness.

4.0 Recommendations

R1. No Further Reductions to the Passenger Transport Support Budget

Warwickshire already has one of the lowest levels of passenger transport subsidy in the Region³ and members believe that if it was to be reduced further there would be damaging impacts on both communities and the local economy.

Recommendation 1

The Task and Finish Group recommend that no further reductions are made to the passenger transport support budget.

R2. New Friday and Saturday Evening Services

The decision to remove all evening bus subsidies has created an inequality in evening bus service provision across the County. The proposals detailed in **Appendix C** would mitigate this and provide people with greater access to services and amenities.

Recommendation 2

The Task and Finish Group recommend that the proposal detailed in Appendix C for funding for a new set of Friday and Saturday evening bus services is adopted as part of Warwickshire County Council's 2013/14 budget.

R3. Reviewing the Network

To ensure the network is achieving its aims and providing best value for money there should be a review twelve months after implementation.

Recommendation 3

The Task and Finish group recommend that officers review the new network twelve months after it is implemented and update Communities Overview and Scrutiny Committee on how the service is performing.

³ Based on a comparison of bus subsidy spend per capita Warwickshire ranks joint bottom with Northamptonshire. Worcestershire, ranked top in the Region, spends over three times the amount that Warwickshire does on subsidised bus services. Information based on the population estimates at 2011 and 2011/12 Local Authority budget figures.

5.0 Financial and Legal Implications

The implications of the recommendations:

Finance

Finance officers approved the figures provided in Appendix C on 29/10/2012.

Risk

There is a risk that if evening bus subsidy was reintroduced, even in a limited capacity, operators currently running evening services on a commercial basis would withdraw those services and try to apply for funding from WCC.

Legal Comments

1. The report does seem at points to treat absence of provision as proof of need and also to assess need as if the population were homogenous. What specific evidence is there to indicate that evening services in the areas proposed will have maximum beneficial impact for the money?

Task and Finish Group comment: The report shows that before the cut to evening services around 40,000 Friday/Saturday passenger journeys were made per year. The routes chosen for the proposal incorporate the communities that showed the greatest footfall from the previous evening network as well as new settlements.

2. Has there been any analysis of whether targeting new subsidies on evening services will have differential impacts on, for example, the young and the elderly, the employed and the unemployed, the disabled and the able-bodied, the religious and non-believers, etc.

Task and Finish Group comment: Transport operations officers have advised that this proposal would help to reduce transport inequality in Warwickshire. The decision to remove all evening bus subsidy prevented WCC from being able to provide the level of service mandated by its own service level criteria so this proposal would be a clear improvement over the current situation.

Scrutiny Review Outline

Review Topic (Name of review)	Bus Services Task and Finish Group
Task and Finish Group Members	Councillors Martyn Ashford (Chair), Penny Bould, Richard Chattaway, David Johnston, Kate Rolfe, Chris Saint, and Ray Sweet
Key Officers / Departments	Kevin McGovern and Andy Stokes, Transport Operations Team
Lead Scrutiny Officer	Dave Abbott (daveabbott@warwickshire.gov.uk)
Relevant Portfolio Holder(s)	Peter Butlin, Portfolio Holder for Transport and Highways
Relevant Corporate Ambitions	Ambition 4 – Improve accessibility and transport options within Warwickshire
Type of Review	In depth review following debate at Communities OSC on 12 April 2012
Timescales	Reporting to Communities OSC on 14 November 2012.
Rationale (Key issues and/or reason for doing the review)	The purpose of the Task and Finish Group was to give Councillors the opportunity to scrutinise the impact of the service changes on users and propose solutions that could be considered as part of the budget setting for 2013/14.
Objectives of Review (Specify exactly what the review should achieve)	<ul style="list-style-type: none"> To gain an understanding of community impacts arising from the service reductions made, and the steps already taken by officers to ameliorate these. To identify and cost improvements to services that would address community disadvantage, to provide an informed input into the 2013/14 budget setting process.
Scope of the Topic (What is specifically to be included/excluded)	<p><u>Include</u> The following is included in the scope of the review:</p> <ul style="list-style-type: none"> All public bus services operating in Warwickshire in receipt of WCC subsidy. <p><u>Excluded</u> The following falls outside the scope of the review:</p> <ul style="list-style-type: none"> Home-to-school transport services operated on behalf of WCC.
How will the public be involved? (Community Forums, consultation, community groups / clubs, etc)	Community Forums District, Borough, Town, and Parish Councillors – case work Community Groups (Advocacy groups for young people, older people etc.) Communications / press
How will our partners be involved? (Relevant stakeholders, District / Borough reps)	Consultation / information gathering sessions

<p>How will the scrutiny achieve value for money for the Council / Council Taxpayers?</p>	<p>Where investment is needed, the review will try to identify innovative solutions to maximise value for money.</p>
<p>What primary / new evidence is needed for the scrutiny? (What information needs to be identified / is not already available?)</p>	<ul style="list-style-type: none"> • Identifying areas of significant transport inequality / lack of access • Information relating to the identification and costing of improvements to services
<p>What secondary / existing information will be needed? (i.e. background information, performance indicators, complaints, existing reports, legislation, central government information and reports)</p>	<ul style="list-style-type: none"> • Transport operations / network operators data • Correspondence with the transport operations team • National and regional research
<p>Indicators of Success – (What factors would tell you what a good review should look like? What are the potential outcomes of the review e.g. service improvements, policy change, etc?)</p>	<ul style="list-style-type: none"> • The review identifies areas of greatest need, where changes to the network or further investment could have the greatest impact. • The review proposes realistic actions to achieve those changes. • The review has a meaningful impact on the budget setting process.



Public Transport Revenue Support - Comparison of Bus Services - April 2011 and September 2012

Place Served	Bus Services prior to 1 April 2011	Key Bus Service Changes as at September 2012
Admington	Mon to Sat once a day off peak service to Stratford.	No change.
Admirals Estate	Frequent daily service to Rugby. Evening and Sunday service. Once a week urban Flexibus.	Monday - Thursday evening service withdrawn. Urban Flexibus withdrawn.
Alcester	Mon to Sat hourly service to Stratford, Redditch and Evesham. Evening and Sunday services. Saturday service to Worcester. Once a week Flexibus to Redditch	Evening service withdrawn.
Alderminster	Mon to Sat hourly service to Stratford and Shipston. Two hourly service to Banbury. Evening and Sunday service.	Evening service withdrawn.
Allen End	Weekly Flexibus service to Tamworth.	No change.
Alvecote	Weekly Flexibus service to Tamworth.	Monday - Friday once a day demand responsive service to Tamworth.
Alveston	Mon to Sat twice hourly service to Stratford, Leamington and Coventry. Evening and Sunday Service. Mon to Fri Flexibus to Stratford. Mon to Sat service to Banbury.	Monday to Thursday evening service withdrawn.
Ansley	Mon to sat hourly service to Nuneaton and Birmingham International. Evening service. Two hourly service to Coventry. Weekly Flexibus to Bedworth	Service to Birmingham International withdrawn. Evening service withdrawn. Weekly flexibus to Atherstone instead of Bedworth
Ansley Common	Mon to Sat hourly service to Nuneaton.	No change.

Ansty	Mon to Sat hourly service to Nuneaton and Coventry, two hourly via Bulkington. Weekly Flexibus to Bedworth.	Reduced to two hourly service to Nuneaton and Coventry. No change to Flexibus.
Ardens Grafton	Twice weekly Flexibus to Stratford.	No change.
Armscote	Mon to Sat two hourly service to Stratford and Shipston. Shipston Link.	Reduced to twice a day service to Stratford and once a day to Shipston. Shipston Link unchanged.
Ash Green	Mon to Sat frequent service to Nuneaton and Coventry. Additional hourly service from Bede Village to Nuneaton. Evening and Sunday service. Twice weekly Flexibus to Nuneaton.	Monday to Friday flexibus to Nuneaton. Service from Bede Village to Nuneaton reduced to every two hours.
Ashlawn Estate	Mon to Sat two buses per hour to Rugby. Hourly service to Northampton and Daventry.	No change
Ashorne	Mon to Sat one peak journey and one shopping journey to Leamington.	No change
Ashow	Weekly Flexibus to Leamington.	No change.
Aspley Heath	Mon to Sat Flexibus service to Redditch. Three days a week Flexibus to Solihull.	No change.
Astley	Weekly flexibus to Bedworth. Twice weekly flexibus to Nuneaton	Flexibus to Bedworth withdrawn
Aston Cantlow	Mon to Sat two hourly service to Stratford and once a week Flexibus to Redditch.	No change
Atherstone	Mon to Sat frequent service to Nuneaton and Coventry. Hourly service to Tamworth, Lichfield and Birmingham International. Two hourly service to Ashby. Evening and Sunday service.	Hourly service to Birmingham International withdrawn. Evening service withdrawn. New Monday - Saturday Atherstone town service introduced.
Attleborough	Mon to Sat frequent service to Nuneaton. Half hourly service to Coventry. Evening and Sunday service.	No Change.

Austrey	Mon to Sat half hourly service to Tamworth. Mon to Fri service to Atherstone. Weekly flexibus to Tamworth. Sunday service.	Monday to Saturday service reduced to hourly. Service to Atherstone reduced to weekly. Flexibus to Tamworth withdrawn.
Avon Dassett	Mon to Sat peak service to Leamington and twice weekly off peak service to Banbury.	Banbury service reduced to once a week.
Baddesley Clinton	Mon to Sat Flexibus service to Leamington and Solihull.	Reduced to twice a week Flexibus to Solihull and twice a week Flexibus to Leamington.
Baddesley Ensor	Mon to Sat half hourly service to Atherstone. Hourly service to Nuneaton, Tamworth, Lichfield and Birmingham international. Evening and Sunday services. Weekly flexibus to Hinckley.	Monday to Saturday reduced to hourly service to Atherstone. Direct services to Nuneaton, Tamworth, Lichfield and Birmingham International withdrawn. Evening services withdrawn. Flexibus withdrawn.
Baginton	Mon to Sat two hourly service to Coventry and Kenilworth.	No change.
Barford	Mon to Sat hourly service to Stratford, Leamington and Coventry. Evening & Sunday service.	Monday - Thursday evening service withdrawn.
Barnacle	Weekly Flexibus to Bedworth.	No change.
Barton on the Heath	Twice weekly service to Banbury and weekly service to Moreton in Marsh. to	Reduced to once a week service to Banbury. Weekly service to Moreton in Marsh withdrawn.
Baxterley	Mon to Sat hourly service to Atherstone and Birmingham International. Weekly Flexibus to Hinckley.	Reduced to four return journeys a day to Atherstone. Service to Birmingham International withdrawn. Flexibus withdrawn.
Bearley	Mon to Sat two hourly service to Stratford. Hourly service to Stratford and Birmingham. Evening and Sunday service. Weekly service to Henley.	Henley service withdrawn.
Beausale	Weekly Flexibus to Leamington and twice weekly Flexibus service to Solihull.	Reduced to twice weekly Flexibus to Leamington.
Bedworth	Mon to Sat frequent services to Coventry and Nuneaton. Hourly service to Walsgrave Hospital. Twice weekly Flexibus to Nuneaton. Evening and Sunday services. Town services.	Improved Monday to Friday Flexibus to Nuneaton.

Bentley	Weekly Flexibus to Atherstone.	No change.
Bermuda Park	Mon to Sat hourly service to Nuneaton.	Two Hourly service to Nuneaton
Bermuda Village	Mon to Sat hourly service to Nuneaton.	No change.
Bidford	Mon to Sat half hourly service to Evesham and Stratford. Hourly service to Redditch. Evening and Sunday service. Twice weekly Flexibus to Stratford.	Evening service withdrawn.
Bilton	Mon to Sat frequent service to Rugby. Evening and Sunday service. Daily Flexibus to Leamington. Weekly urban Flexibus.	Monday to Thursday evening service withdrawn. All Flexibuses withdrawn.
Binley Woods	Mon to Sat frequent service to Coventry. Half hourly service to Rugby. Evening and Sunday service. Weekly Flexibus to Rugby and Coventry supermarkets.	Flexibus to Rugby withdrawn.
Binton	Twice weekly Flexibus to Stratford	No change.
Birchley Heath	Mon to Sat hourly service to Nuneaton. Weekly Flexibus to Bedworth.	New daily service to Atherstone.
Birchmoor	Mon to Sat hourly service to Tamworth. Sunday service.	No change.
Birdingbury	Mon to Sat two hourly service to Rugby and Coventry. Weekly Flexibus to Rugby. Mon - Fri Dial a Ride service to Southam.	No change.
Bishops Itchington	Mon to Sat hourly services to Leamington and Southam. Two hourly services to Banbury and Daventry. Mon to Sat once a day service to Coventry. Evening and Sunday service. Mon to Fri Flexibus service to Stratford. Once a week Flexibus to Leamington.	Monday to Thursday evening service withdrawn. Service to Coventry withdrawn. Flexibuses withdrawn.
Bishops Tachbrook	Mon to Sat hourly service to Leamington, Coventry and Stratford. Evening service.	Monday to Thursday evening service withdrawn. New Sunday service.

Bodymoor Heath	Weekly Flexibus to Tamworth.	No change.
Bourton on Dunsmore	Mon to Sat two hourly service to Rugby and Coventry.	No change.
Brailes	Mon to Sat two hourly service to Banbury, Shipston and Stratford. Shipston link to Shipston and Banbury.	No change.
Bramcote Camp	Mon to Sat two hourly service to Nuneaton and Coventry. Weekly Flexibus to Rugby	No change.
Brandon	Mon to Sat half hourly service to Coventry and Rugby. Evening and Sunday service. Weekly Flexibus to Rugby and Coventry supermarkets.	Evening service withdrawn. Flexibuses withdrawn. All
Bretford	Mon to Sat half hourly service to Coventry and Rugby. Evening and Sunday service. Weekly Flexibus to Rugby and Coventry supermarkets.	Evening service withdrawn to Coventry supermarkets withdrawn. Flexibus
Bridgetown	Mon to Sat half hourly service to Stratford.	No change.
Brinklow	Mon to Sat half hourly service to Coventry and Rugby. Sunday service. Weekly Flexibus to Rugby, Coventry supermarkets, Leicester and Nuneaton.	Flexibuses to Coventry supermarkets, Leicester and Nuneaton withdrawn.
Broadwell	Mon to Fri once a day service to Rugby. Mon to Fri Dial a Ride service to Southam.	Service to Rugby reduced to twice a week.
Broom	Twice weekly Flexibus to Stratford. Saturday service to Worcester.	No change.
Brownsover	Mon to Sat frequent service to Rugby. Evening and Sunday service. Weekly urban Flexibus.	Monday to Thursday evening service withdrawn. Flexibus withdrawn.
Bubbenhall	Mon to Sat two hourly service to Coventry and Kenilworth. Mon to Sat Flexibus to Leamington.	Flexibus reduced to once a week.

Bulkington	Mon to Sat half hourly service to Coventry and Nuneaton. Two hourly service to Coventry via Walsgrave. Evening and Sunday service. Weekly Flexibus to Bedworth and Nuneaton.	No change in service levels.
Bull Ring	Mon to Sat frequent service to Nuneaton. Evening and Sunday service. Mon to Sat urban Flexibus.	Evening service withdrawn.
Burmington	Mon to Sat two hourly service to Stratford. Sunday service. Shipston Link.	New Shipston link service to Chipping Norton.
Burton Green	Mon to Sat hourly service to Coventry. Two hourly service to Kenilworth and Cannon Park.	Service to Cannon Park upgraded to hourly. Service to Kenilworth reduced to twice a week.
Burton Hastings	Mon to Sat once a day service to Nuneaton.	Reduced to once a week flexibus.
Bury Road	Mon to Sat urban Flexibus.	Service frequency reduced.
Butlers Marston	Mon to Sat two hourly service to Banbury and Stratford. Weekly service to Moreton in Marsh.	Weekly service to Moreton in Marsh withdrawn.
Camp Hill	Mon to Sat frequent service to Nuneaton. Evening and Sunday service. Mon to Sat urban Flexibus.	Evening service withdrawn. Urban flexibus withdrawn.
Chapel End	Mon to Sat frequent service to Nuneaton, Atherstone and Coventry. Hourly service to Birmingham International. Evening and Sunday service. Mon to Sat urban Flexibus.	Service to Birmingham International withdrawn. Late evening service withdrawn. Urban flexibus withdrawn.
Chapel Green	Twice weekly Flexibus to Nuneaton.	No change
Charlecote	Mon to Sat hourly service to Stratford, Leamington and Coventry. Evening and Sunday service.	Monday to Thursday evening service withdrawn.
Chase Meadow	Mon to Sat frequent service to Warwick, Leamington, Kenilworth and Coventry.	No change.
Cherington	Mon to Sat two hourly services to Shipston and Stratford. Weekly Shipston Link to Banbury and Shipston. Saturday service to Banbury.	Service to Stratford reduced to two journeys on schooldays only. Shipston Link service to Shipston now twice weekly. New weekly Shipston link service to Chipping Norton. Saturday service to Banbury withdrawn

Church Lawford	Mon to Sat half hourly service to Coventry and Rugby. Evening and Sunday service. Weekly Flexibus to Rugby.	Evening service withdrawn. change.	No
Churchover	Flexibus to Rugby three days a week.	Reduced to Flexibus to Rugby twice a week.	
Claverdon	Mon to Sat once a day service to Stratford. Weekly Flexibus to Leamington, Twice weekly Flexibus to Solihull.	Monday to Saturday flexibus, giving two days to Stratford, two days to Leamington and two days to Solihull.	
Clifford Chambers	Mon to Sat hourly service to Stratford and Cotswolds.	No change.	
Clifton	Mon to Sat two buses per hour to Rugby. Hourly service to Leicester.	No change.	
Coalpit Fields	Mon to Sat hourly off peak service to Bedworth.	No change.	
Coleshill	Mon to Sat half hourly service to Birmingham. Frequent service to Birmingham International. Hourly services to Nuneaton, Sutton Coldfield, Tamworth and Atherstone. Weekly flexibus to Solihull. Weekly flexibus to Atherstone Twice weekly flexibus to Tamworth and Nuneaton. Evening and Sunday service.	Services to Birmingham International reduced to half hourly. Hourly service to Nuneaton and Atherstone withdrawn. Service to Sutton Coldfield reduced to two hourly. Flexibus to Tamworth reduced to once a week.	
Collycroft	Mon to Sat hourly service to Bedworth, Nuneaton and Walsgrave Hospital.	No change.	
Copston Magna	Weekly Flexibus to Rugby.	No change.	
Corley and Corley Moor	Mon to Sat two hourly service to Coventry. Twice weekly Flexibus to Nuneaton.	No change	
Coughton	Mon to Sat hourly services to Stratford, Redditch and Evesham. Sunday service.	No change	
Cubbington	Mon to Sat half hourly service to Leamington. Evening and Sunday service. Mon to Sat Flexibus service to Leamington.	Monday to Thursday evening service withdrawn.	

Curdworth	Mon to Sat hourly services to Birmingham, Tamworth, Sutton Coldfield, Coleshill and Birmingham International. Weekly Flexibus to Tamworth, Solihull and Atherstone.	Services to Sutton Coldfield and Coleshill reduced to two hourly. Direct service to Birmingham International withdrawn. Flexibuses to Tamworth & Atherstone withdrawn.
Dalton Road, Bedworth	Mon to Sat hourly off peak service to Bedworth.	No change.
Dencer Drive	Mon to Sat hourly off peak service to Kenilworth.	Reduced to two hourly service to Kenilworth. New two hourly direct service to Coventry.
Devitts Green	Mon to Sat hourly service to Nuneaton and Birmingham International. Two hourly service to Coventry.	Service to Nuneaton and Birmingham International withdrawn.
Dordon	Mon to Sat hourly service to Nuneaton, Tamworth and Lichfield. Evening and Sunday services. Weekly Flexibus to Atherstone and Tamworth.	Evening services withdrawn. Flexibus to Tamworth withdrawn.
Dunchurch	Mon to Sat hourly services to Leamington, Rugby and Daventry. Two hourly service to Coventry. Twice weekly Flexibus to Rugby. Evening and Sunday service.	Monday to Thursday evening services withdrawn.
Dunnington	Twice weekly Flexibus to Stratford. Saturday service to Worcester.	No change.
Earlswood	Mon to Fri hourly service to Solihull. Mon to Sat Flexibus service to Redditch. Three days a week Flexibus service to Solihull.	Hourly service to Solihull withdrawn.
Easenhall	Mon to Sat two hourly service to Rugby and Coventry.	No change.
Eathorpe	Mon to Sat Flexibus service to Leamington.	Reduced to weekly Flexibus to Leamington.
Edgehill	Mon to Sat once a day service to Banbury and Stratford.	No change.
Ettington	Mon to Sat two hourly service to Banbury and Stratford. Shipston Link. Weekly service to Moreton in Marsh	Service to Moreton in Marsh withdrawn.
Exhall	Twice weekly Flexibus to Stratford.	No change.

Farnborough	Mon to Sat once a day services to Banbury and peak service to Leamington.	No change
Fenny Compton	Mon to Sat once a day service to Banbury with additional journeys Thur and Sat. Peak service to Leamington. Mon - Fri Dial a Ride service to Southam.	Additional journey to Banbury withdrawn on Saturdays.
Fillongley	Mon to Sat two hourly service to Coventry. Twice weekly Flexibus to Nuneaton.	No change
Five Ways	Weekly Flexibus to Leamington. Twice weekly Flexibus to Solihull.	Reduced to twice weekly Flexibus to Leamington.
Flecknoe	Weekly Flexibus to Rugby.	New Monday to Saturday dial a ride to Daventry
Forbes Estate	Mon to Sat frequent service to Warwick, Leamington, Kenilworth and Coventry. Hourly service to Stratford. Evening and Sunday service. Weekly urban Flexibus.	Monday to Thursday evening service withdrawn. Urban Flexibus withdrawn.
Forshaw Heath	Mon to Sat Flexibus to Redditch.	No change.
Frankton	Mon to Sat two hourly service to Rugby and Coventry.	No change.
Furnace End	Mon to Sat hourly service to Nuneaton, Coleshill and Birmingham International. Weekly Flexibus to Atherstone	Service to Nuneaton and Birmingham International withdrawn. New two hourly service to Coleshill and Sutton Coldfield.
Galley Common	Mon to Sat hourly service to Nuneaton and Birmingham International. Evening service. Mon to Sat urban Flexibus.	Hourly service to Birmingham International withdrawn. Evening service withdrawn. Flexibus withdrawn.
Gaydon	Mon to Sat two hourly service to Leamington. Once a day service to Banbury. Evening service. Weekly flexibus to Leamington and Banbury.	Monday to Thursday evening service withdrawn. Flexibus to Leamington withdrawn.
Gilson	Once a week Flexibus to Solihull.	No change.

Grandborough	Mon to Fri once a day service to Rugby. Weekly Flexibus to Rugby.	Three times a week to Rugby. Mon - Sat dial a ride service to Daventry.	New
Great Alne	Mon to Sat hourly services to Stratford, Redditch and Alcester. Evening service. Weekly Flexibus to Redditch.	Evening service withdrawn.	
Great Wolford	Weekly service to Moreton in Marsh, twice weekly service to Banbury and Shipston Link.	Services to Moreton in Marsh and Banbury withdrawn.	
Grendon	Mon to Sat two buses per hour to Atherstone. Hourly service to Nuneaton, Tamworth and Lichfield and Birmingham International. Evening and Sunday services. Weekly Flexibus to Hinckley and Atherstone.	Service to Birmingham International withdrawn. Evening services withdrawn. Flexibus to Hinckley withdrawn.	
Grove End	Once a week Flexibus.	No change.	
Grove Farm	Mon to Sat frequent service. Evening and Sunday service. Weekly urban Flexibus.	Evening service withdrawn.	
Gun Hill	Mon to Sat half hourly service to Nuneaton. Hourly service to Birmingham International. Evening service. Two hourly service to Coventry.	Service to Birmingham International withdrawn. Evening service withdrawn.	
Halford	Mon to Sat two hourly service to Stratford and Shipston. Once a week service to Moreton in Marsh. Link.	Once a Shipston Reduced level of service to Shipston and Stratford. Service to Moreton in Marsh withdrawn.	
Hampton Lucy	Mon to Sat once a day journey to Stratford	Mon - Fri flexibus to Stratford.	
Hampton Magna	Mon to Sat daytime half hourly service to Warwick, Leamington, Kenilworth and Coventry. Evening service.	Monday to Thursday evening service withdrawn.	
Hampton on the Hill	Mon to Sat daytime half hourly service to Warwick, Leamington, Kenilworth and Coventry. Evening service.	Monday to Thursday evening service withdrawn.	
Harborough Magna	Mon to Sat half hourly service to Coventry and Rugby. Sunday service. Weekly Flexibus to Leicester and Nuneaton.	Flexibus to Leicester withdrawn.	

Harbury	Mon to Sat hourly services to Leamington and Southam. Two hourly services to Banbury and Daventry. Mon to Sat once a day service to Coventry. Evening & Sunday service. Mon to Fri Flexibus service to Stratford and once a week Flexibus to Leamington.	Monday to Thursday evening service withdrawn. Service to Coventry withdrawn. Flexibuses withdrawn.
Hartshill	Mon to Sat frequent service to Nuneaton and Coventry. Hourly service to Tamworth and Lichfield. Evening and Sunday service. Weekly urban Flexibus.	Late evening service withdrawn. Urban flexibus withdrawn.
Haseley Knob	Twice weekly Flexibus to Solihull. Weekly Flexibus to Leamington.	Twice weekly Flexibus to Solihull withdrawn. Flexibus to Leamington increased to twice weekly.
Haselor	Twice weekly Flexibus to Stratford.	No change.
Hatton	Mon to Sat Flexibus services to Leamington and Solihull.	Monday to Saturday flexibus, giving two days to Stratford, two days to Leamington and two days to Solihull.
Hatton Park	Mon to Sat hourly service to Warwick and Leamington. Evening service.	Monday to Thursday evening service withdrawn.
Henley in Arden	Mon to Sat hourly service to Stratford and Birmingham. Evening and Sunday service. Daily Flexibus to Redditch.	No change
Hill	Weekly Flexibus to Rugby. Monday to Friday dial a ride to Southam.	Rugby service improved to twice weekly.
Hill Wootton	Weekly Flexibus to Leamington	No change.
Hillmorton	Mon to Sat frequent service to Rugby. Hourly service to Northampton and Daventry. Evening and Sunday service. Mon to Sat Urban Flexibus.	Evening service withdrawn.
Hillside Estate	Mon to Sat hourly service to Rugby	New hourly service to Daventry.
Honiley	Twice weekly Flexibus to Solihull. Weekly Flexibus to Leamington.	Flexibus to Solihull withdrawn. Twice weekly flexibus to Leamington.
Honington	Weekly service to Shipston. Shipston Link.	Reduced to Shipston Link only.

Horeston Grange	Mon to Sat hourly off peak service to Nuneaton.	No change
Hunningham	Mon to Sat Flexibus service to Leamington	Reduced to weekly Flexibus to Leamington.
Hurley	Mon to Sat hourly service to Atherstone and Birmingham International. Two hourly service to Tamworth. Evening and Sunday service. Once a week Flexibus to Hinckley.	Evening service withdrawn. Direct service to Birmingham International withdrawn. Service level to Atherstone reduced. Hourly service to Coleshill and Tamworth. Hinckley Flexibus withdrawn. New weekly flexibus to Atherstone.
Idlicote	Weekly service to Shipston. Shipston Link.	Reduced to Shipston Link only.
Ilmington	Mon to Sat two hourly service to Stratford and Shipston. Shipston Link.	Reduced level of service to Stratford and Shipston. No change to Shipston Link.
Iron Cross	Mon to Sat half hourly service to Evesham and Stratford. Evening and Sunday service.	Evening service withdrawn.
Justins Avenue	Mon to Sat half hourly service to Stratford.	New evening service.
Kenilworth	Mon to Sat frequent service to Coventry and Leamington. Hourly service to Stratford. Two hourly service to Coventry via NAC. Regular town services. Evening and Sunday services. Once a week Flexibus to Leamington.	Flexibus withdrawn.
Keresley	Mon to Sat frequent service to Coventry. Half hourly service to Bedworth and Nuneaton. Evening and Sunday service. Twice weekly Flexibus to Bedworth and Nuneaton.	Flexibus withdrawn.
Kineton	Mon to Sat two hourly service to Stratford, Banbury and Leamington. Evening service. Weekly service to Moreton in Marsh.	Monday to Thursday evening service withdrawn. Service to Moreton in Marsh withdrawn.
Kings Coughton	Mon to Sat hourly service to Redditch, Evesham and Stratford. Sunday service. Weekly Flexibus to Redditch.	No change.
Kings Newnham	Weekly Flexibus to Rugby.	No change.

Kingsbury	Mon to Sat half hourly service to Tamworth. Hourly service to Birmingham, Birmingham International and Atherstone. Evening and Sunday service. Weekly Flexibus to Solihull.	Direct service to Birmingham International withdrawn. Replaced by service to Coleshill only. Service level to Atherstone reduced. New weekly flexibus to Atherstone. Evening service withdrawn.
Kites Hardwick	Mon to Sat hourly service to Rugby and Leamington. Evening and Sunday service. Once a week Flexibus to Rugby.	Monday to Thursday evening service withdrawn.
Knightcote	Twice weekly service to Banbury.	Reduced to weekly service to Banbury.
Ladbroke	Mon to Sat two hourly service to Banbury, Southam and Leamington. Mon to Fri Dial a Ride service to Southam.	No change.
Langley	Twice weekly Flexibus to Solihull	Improved to twice a week Flexibus to Stratford and twice a week flexibus to Solihull.
Lapworth	Mon to Sat Flexibuses to Leamington and Solihull	Replaced by Monday to Saturday flexibus giving two days to Leamington, two days to Stratford and two days to Solihull.
Lawford Heath	Mon to Sat daily service to Rugby.	No change.
Lea Marston	Mon to Sat hourly service to Birmingham International, Coleshill and Nuneaton. Weekly Flexibus to Solihull and Tamworth.	Reduced to weekly Flexibuses to Solihull and Tamworth.
Leamington	Mon to Sat network of inter-urban and town services. Evening and Sunday services. Urban Flexibuses.	Limited Monday to Thursday evening services.
Leamington Hastings	Weekly Flexibus to Rugby. Mon to Fri Dial a Ride to Southam.	Improved to twice weekly flexibus to Rugby.
Leek Wootton	Mon to Sat hourly service to Stratford, Warwick and Coventry. Weekly Flexibus to Leamington.	Flexibus withdrawn.
Lighthorne	Mon to Sat one peak journey and one shopping journey to Leamington. Weekly Flexibus to Banbury.	No change.

Lighthorne Heath	Mon to Sat two hourly service to Leamington. Mon to Fri service to Banbury. Evening service. Weekly Flexibus to Leamington and Banbury.	Monday to Thursday evening service withdrawn. Flexibus to Leamington withdrawn.
Lillington	Mon to Sat frequent service to Leamington. Evening and Sunday service. Mon to Sat urban Flexibus	Monday to Thursday evening service withdrawn.
Little Alne	Weekly Flexibus to Redditch	No change.
Little Compton	Twice a week service to Banbury, once a week to Moreton in Marsh and Chipping Norton.	Service to Banbury reduced to once a week.
Little Lawford	Once a week Flexibus to Rugby.	No change.
Little Packington	Once a week Flexibus to Solihull.	No change.
Little Wolford	Weekly service to Banbury and Moreton in Marsh. Shipston Link.	Shipston Link only.
Long Compton	Mon to Sat two hourly service to Stratford. Sunday service. Shipston Link services to Shipston and Banbury.	Additional Shipston Link service to Chipping Norton.
Long Itchington	Mon to Sat hourly service to Leamington. Mon to Sat once a day service to Coventry. Twice weekly service to Banbury. Evening service. Mon to Fri Flexibus to Stratford.	Monday to Thursday evening service withdrawn. Banbury service reduced to weekly. Service to Coventry withdrawn. Flexibus withdrawn.
Long Lawford	Mon to Sat frequent service to Rugby. Half hourly service to Coventry. Evening and Sunday service. Once a week urban Flexibus.	Evening service withdrawn. Flexibus withdrawn.
Long Marston	Mon to Sat two hourly service to Stratford.	No change.
Lower Quinton	Mon to Sat hourly service to Stratford and Cotswolds. Evening service.	Evening service withdrawn.
Lower Shuckburgh	Mon to Sat two hourly service to Leamington, Southam and Daventry. Weekly Flexibus to Rugby.	No change.

Lowsonford	Twice weekly Flexibus to Solihull. Flexibus to Leamington.	Weekly	Flexibus to Leamington withdrawn.
Loxley	Mon to Sat one peak journey and one journey to Stratford.	shopping	No change.
Luddington	Mon to Sat two hourly service to Stratford.		No change.
Mancetter	Mon to Sat frequent service to Nuneaton and Coventry. Hourly service to Tamworth and Lichfield. Evening and Sunday service.		Late evening service withdrawn.
Mappleborough Green	Weekly Flexibus to Redditch		No change.
Marton	Mon to Sat two hourly service to Rugby and Coventry. Weekly Flexibus to Rugby. Mon to Fri dial a ride service to Southam.		Flexibus upgraded to twice weekly.
Maxstoke	Twice weekly Flexibus to Nuneaton. Flexibus to Atherstone.	Weekly	No change.
Middleton	Twice weekly Flexibus to Tamworth.		Reduced to weekly Flexibus to Tamworth.
Monks Kirby	Mon to Sat two hourly service to Rugby and Coventry. Weekly Flexibuses to Rugby, Leicester and Nuneaton.		Flexibuses to Rugby and Leicester withdrawn.
Moreton Morrell	Mon to Sat one peak journey and one shopping journey to Leamington. Mon to Fri Flexibus to Stratford. Once a week Flexibus to Banbury.		Flexibus to Stratford withdrawn.
Napton on the Hill	Mon to Sat two hourly service to Leamington, Southam and Daventry. Twice weekly service to Banbury. Weekly Flexibus to Rugby.		Service to Banbury reduced to weekly.
Nether Whitacre	Weekly Flexibus service to Solihull and Atherstone.		Additional Two hourly service to Coleshill and Sutton Coldfield.

Newbold on Avon	Mon to Sat frequent services to Rugby. Half hourly service to Coventry. Sunday service. Twice weekly Flexibuses to Rugby. Weekly Flexibuses to Leicester and Nuneaton.	Flexibuses to Leicester and Rugby withdrawn. New weekly flexibus to Hinckley.
Newbold on Stour	Mon to Sat hourly service to Stratford and Shipston. Two hourly service to Banbury. Evening and Sunday service.	Evening service withdrawn.
Newbold Pacey	Mon to Sat hourly service to Leamington, Coventry and Stratford.	No change.
Newton Regis	Mon to Sat two buses per hour to Tamworth. Hourly service to Polesworth. Sunday service. Mon to Fri twice daily service to Atherstone. Weekly Flexibus to Tamworth.	Service to Tamworth reduced to hourly. Atherstone service withdrawn.
No Mans Heath	Mon to Fri twice daily service to Atherstone. Weekly Flexibus to Tamworth.	Service to Atherstone withdrawn.
Northend	Mon to Sat once a day service to Banbury with additional journeys on Thurs and Sat. Peak service to Leamington.	Additional Saturday journey to Banbury withdrawn.
Norton Lindsey	Mon to Sat two return journeys to Stratford. Twice weekly Flexibus to Solihull.	Reduced to twice weekly Flexibus to Stratford and twice weekly to Solihull.
Nuneaton	Mon to Sat network of inter-urban and town services. Evening and Sunday services. Urban Flexibuses.	Severely reduced evening services.
Offchurch	Weekly Flexibus to Banbury	New weekly Flexibus to Leamington
Old Arley	Mon to Sat half hourly service to Nuneaton. Hourly service to Birmingham International. Evening service. Two hourly service to Coventry.	Service to Birmingham International withdrawn. Evening service withdrawn.
Old Milverton	Weekly Flexibus to Leamington.	No change.
Oxhill	Mon to Sat two hourly service to Banbury and Stratford. Saturday service to Shipston. Shipston Link.	Saturday service to Shipston withdrawn.
Packington	Twice weekly Flexibus to Nuneaton.	No change.

Pailton	Mon to Sat hourly service to Rugby and Coventry. Weekly Flexibuses to Rugby, Leicester and Nuneaton.	Flexibuses to Rugby and Leicester withdrawn.
Piccadilly	Mon to Sat hourly service to Atherstone and Birmingham International. Two hourly service to Tamworth. Evening and Sunday service. Once a week Flexibus to Hinckley.	Evening service withdrawn. Direct service to Birmingham International withdrawn. Replaced by hourly service to Coleshill and Tamworth. Reduced service to Atherstone New weekly Flexibus to Atherstone. Flexibus to Hinckley withdrawn.
Pillerton Hersey	Mon to Sat two hourly service to Banbury and Stratford. Weekly service to Moreton in Marsh.	Weekly service to Moreton in Marsh withdrawn.
Pillerton Priors	Mon to Sat two hourly service to Banbury and Stratford. Weekly service to Moreton in Marsh.	Weekly service to Moreton in Marsh withdrawn.
Pinley Green	Twice weekly Flexibus to Solihull. Weekly Flexibus to Leamington. Weekly service to Stratford.	Replaced by Monday to Saturday flexibus giving two days to Leamington, two days to Stratford and two days to Solihull.
Polesworth	Mon to Sat half hourly service to Tamworth. Hourly service to Atherstone, Nuneaton and Lichfield. Evening and Sunday service. Weekly Flexibuses to Atherstone and Tamworth.	Evening service withdrawn. Flexibuses withdrawn.
Preston on Stour	Mon to Sat once a day service to Stratford.	No change.
Princethorpe	Mon to Sat two hourly service to Rugby and Coventry. Mon to Sat once a day service to Leamington. Weekly Flexibus to Rugby.	Flexibus to Leamington reduced to weekly. Flexibus to Rugby upgraded to twice weekly.
Priors Hardwick	Weekly Flexibus to Rugby. Mon - Fri Dial a Ride service to Southam.	No change. New Mon - Sat dial a ride to Daventry
Priors Marston	Weekly Flexibus to Rugby. Mon - Fri Dial a Ride service to Southam.	No change. New Mon - Sat dial a ride to Daventry
Radford Semele	Mon to Sat half hourly service to Southam and Leamington. Hourly service to Rugby. Evening and Sunday service. Weekly Flexibus to Leamington and Banbury.	Monday to Thursday evening service withdrawn.

Radway	Mon to Sat once a day service to Banbury and Stratford.		No change.
Ratley	Mon to Sat once a day service to Banbury and Stratford.		No change.
Reading Court	Mon to Fri urban Flexibus service.		No change.
Ridge Lane	Mon to Sat hourly service to Nuneaton. Flexibus to Atherstone.	Weekly	Flexibus withdrawn. Daily service to Atherstone
Rokeby Estate	Mon to Sat hourly service to Rugby.		New hourly service to Daventry.
Rowington	Mon to Sat daily Flexibus service to Leamington and Solihull.		Replaced by Monday to Saturday flexibus giving two days to Leamington, two days to Stratford and two days to Solihull.
Rugby	Mon to Sat network of inter-urban and town services. and Sunday services. Urban Flexibuses.	Evening	Severely reduced evening services.
Ryton on Dunsmore	Mon to Sat two hourly service to Coventry and Rugby. a day service to Leamington.	Once	Leamington service reduced to once a week.
Saffron Meadow	Mon to Fri urban Flexibus.		No change
Salford Priors	Mon to Sat half hourly service to Evesham and Stratford. Evening and Sunday service.		Evening service withdrawn.
Sambourne	Weekly service to Redditch.		No change.
Sawbridge	Weekly Flexibus to Rugby.		New Mon - Sat dial a ride to Daventry
Seckington	Mon to Fri twice daily service to Atherstone. Flexibus to Tamworth.	Weekly	Service to Atherstone withdrawn.
Shawbury	Twice weekly Flexibus to Nuneaton. to Atherstone.	Weekly Flexibus	No change.

Sherbourne	Mon to Sat hourly service to Stratford, Warwick, Leamington and Coventry. Evening and Sunday service.	Monday to Thursday evening service withdrawn.
Shilton	Mon to Sat hourly service to Nuneaton and Coventry. Weekly Flexibus to Bedworth.	Reduced to two hourly service to Nuneaton and Coventry.
Shipston	Mon to Sat hourly service to Stratford. Two hourly service to Banbury. Twice weekly service to Moreton in Marsh. Evening and Sunday services. Shipston Link.	Evening services withdrawn. daily service to Moreton in Marsh. New
Shotteswell	Twice weekly service to Banbury.	Reduced to weekly Flexibus to Banbury.
Shrewley Common	Mon to Sat daily Flexibus service to Leamington and Solihull. Weekly service to Stratford.	Replaced by Monday to Saturday flexibus giving two days to Leamington, two days to Stratford and two days to Solihull.
Shustoke	Mon to Sat hourly service to Birmingham International, Coleshill and Nuneaton. Twice weekly Flexibus to Nuneaton. Weekly Flexibus to Atherstone.	Service to Birmingham International withdrawn. Replaced by two hourly service to Coleshill and Sutton Coldfield.
Shuttington	Mon to Sat two buses per hour to Tamworth. Hourly service to Polesworth. Sunday service. Mon to Fri twice daily service to Atherstone. Weekly Flexibus to Tamworth.	Tamworth service reduced to hourly. Flexibus withdrawn. Atherstone service withdrawn.
Snitterfield	Mon to Sat two hourly service to Stratford. Twice weekly Flexibus to Solihull.	No change to frequency but longer journey times to Stratford.
South Farm	Mon to Sat frequent service to Leamington. Evening and Sunday service.	Monday to Thursday evening service reduced.
Southam	Mon to Sat half hourly service to Leamington. Hourly service to Rugby. Two hourly service to Daventry and Banbury. Additional journeys to Banbury on Thur and Sat. Once a day service to Coventry. Evening and Sunday service. Mon to Fri once a day Flexibus to Stratford.	Additional Saturday journey to Banbury withdrawn. Service to Coventry withdrawn. Monday to Thursday evening service withdrawn. Flexibus withdrawn.
Stockingford	Mon to Sat frequent service to Nuneaton. Evening and Sunday service. Urban Flexibus.	Evening service withdrawn. Urban flexibus reduced to weekly.

Stockton	Mon to Sat hourly service to Rugby and Leamington. Evening and Sunday service. Twice weekly service to Banbury.	Monday to Thursday evening service withdrawn. Service to Banbury reduced to weekly.
Stoneleigh	Mon to Sat two hourly service to Kenilworth and Coventry.	Slight reduction in frequency. New weekly flexibus to Leamington.
Stourton	Mon to Sat two hourly services to Shipston and Stratford. Weekly Shipston Link to Banbury and Shipston. Saturday service to Banbury.	Service to Stratford reduced to two journeys on schooldays only. Shipston Link service to Shipston now twice weekly. New weekly Shipston link service to Chipping Norton. Saturday service to Banbury withdrawn
Stratford	Mon to Sat network of inter-urban and town services. Evening and Sunday services. Urban Flexibuses.	All Monday to Thursday evening services withdrawn, some evening services totally withdrawn.
Street Ashton Crossroads	Mon to Sat hourly service to Rugby and Coventry. Weekly Flexibuses to Rugby, Leicester and Nuneaton.	Flexibus to Leicester withdrawn.
Stretton on Dunsmore	Mon to Sat two hourly service to Coventry and Rugby. Once a day service to Leamington.	Leamington service reduced to weekly.
Stretton on Fosse	Twice a week service to Banbury and Moreton in Marsh. Shipston Link.	New daily service to Moreton In Marsh.
Stretton under Fosse	Mon to Sat hourly service to Rugby and Coventry. Weekly Flexibuses to Rugby, Leicester and Nuneaton.	Flexibuses to Leicester and Nuneaton withdrawn.
Stud Farm	Mon to Sat frequent service to Leamington. Evening and Sunday service. Mon to Sat urban Flexibus.	Monday to Thursday evening service withdrawn.
Studley	Mon to Sat frequent service to Redditch. Hourly service to Stratford and Evesham. Sunday service. Redditch. Weekly Flexibus to	No change.
Sydenham	Mon to Sat frequent service to Leamington. Half hourly service to Coventry. Evening and Sunday service. Twice weekly urban Flexibus.	Urban Flexibus services withdrawn.

Tanworth in Arden	Mon to Sat Flexibus service to Redditch. a week Flexibus to Solihull.	3 times	No change.
Temple Grafton	Twice weekly Flexibus to Stratford		No change.
Temple Herdewyke	Mon to Sat twice a day service to Leamington, once a day service to Banbury. Once a week Flexibus service to Banbury.		No change.
Thurlaston	Mon to Sat two hourly service to Rugby and Coventry.		No change.
Tiddington	Mon to Sat half hourly service to Stratford, Leamington and Coventry. Evening and Sunday service. Mon to Fri urban Flexibus.		Monday to Thursday evening service withdrawn.
Town Thorns	Mon to Sat two hourly service to Rugby and Coventry		No change.
Tredington	Mon to Sat hourly service to Stratford and Shipston. hourly service to Banbury. Evening and Sunday service.	Two	Evening service withdrawn.
Trinity Mead	Mon to Sat half hourly service to Stratford.		No change.
Tysoe	Mon to Sat two hourly service to Banbury and Stratford. Saturday service to Shipston. Shipston Link.		Saturday service to Shipston withdrawn.
Ufton	Mon to Sat half hourly service to Leamington and Southam. Hourly service to Rugby.		No change.
Upper Quinton	Mon to Sat two hourly service to Stratford and Cotswolds.		No change.
Wappenbury	Mon to Sat Flexibus service to Leamington		Reduced to weekly Flexibus.
Warmington	Twice weekly service to Banbury.		Reduced to once a week Flexibus to Banbury.
Warton	Mon to Sat half hourly service to Tamworth. service to Atherstone. Tamworth. Sunday service.	Mon to Fri Weekly flexibus to	Mon to Sat service reduced to hourly. Service to Atherstone reduced to weekly.

Warwick	Mon to Sat frequent services to Coventry, Kenilworth and Leamington. Two buses per hour to Stratford. Evening and Sunday services. Mon to Sat urban Flexibus.	Monday to Thursday evening services reduced or withdrawn. Urban Flexibus withdrawn.
Warwick Gates	Mon to Sat half hourly to Leamington.	No change.
Wasperton	Mon to Sat hourly service to Stratford, Leamington and Coventry. Evening and Sunday services.	Monday to Thursday evening service withdrawn.
Water Orton	Mon to Sat half hourly service to Birmingham, hourly service to Sutton Coldfield and Birmingham International. Evening and Sunday services. Flexibus services to Tamworth and Solihull. Weekly	Direct service to Birmingham International withdrawn. Reduced to two hourly service to Sutton Coldfield. Flexibus to Tamworth withdrawn.
Weddington	Mon to Sat half hourly service to Nuneaton. Two hourly service to Atherstone and Ashby.	No change.
Welford on Avon	Mon to Sat two hourly service to Stratford. Twice weekly Flexibus to Stratford.	No change
Wellesbourne	Mon to Sat half hourly service to Stratford, Leamington and Coventry. Evening and Sunday service. Mon to Sat once a day service to Banbury. Mon to Fri Flexibus to Stratford. Weekly service to Moreton in Marsh.	Monday to Thursday evening service withdrawn. Service to Moreton in Marsh withdrawn.
West Green Drive	Mon to Sat half hourly service to Stratford.	No change.
Weston under Wetherley	Mon to Sat Flexibus to Leamington.	Flexibus to Leamington improved to twice daily.
Whatcote	Weekly service to Shipston. Shipston Link.	Reduced to Shipston Link only.
Whichford	Mon to Sat two hourly services to Shipston and Stratford. Weekly Shipston Link to Banbury and Shipston. Saturday service to Banbury.	Service to Stratford reduced to two journeys on schooldays only. Shipston Link service to Shipston now twice weekly. New weekly Shipston link service to Chipping Norton. Saturday service to Banbury withdrawn

Whitacre Heath	Mon to Sat hourly service to Birmingham International, Coleshill and Nuneaton. Weekly Flexibus to Solihull, Tamworth, Atherstone and Nuneaton.	Service to Birmingham International withdrawn. Replaced by two hourly service to Coleshill and Sutton Coldfield.
Whitestone	Mon to Sat frequent service to Nuneaton. Half hourly service to Coventry. Evening and Sunday service. Weekly Flexibus to Nuneaton.	No change
Whitnash	Mon to Sat frequent service to Leamington. Evening and Sunday service.	Monday to Thursday evening service reduced.
Wibtoft Turn	Weekly Flexibus to Rugby.	No change.
Willey	Weekly Flexibus to Rugby.	No change.
Willoughby	Mon to Sat hourly service to Rugby and Daventry. Weekly Flexibus to Rugby.	Flexibus to Rugby upgraded to twice weekly. New Mon - Sat dial a ride service to Daventry
Wilmcote	Mon to Sat two hourly service to Stratford. Evening service . Once a week Flexibus to Redditch.	Evening service withdrawn.
Wimpstone	Mon to Sat once a day service to Stratford.	No change.
Wishaw	Weekly Flexibus to Tamworth.	No change.
Withybrook	Weekly Flexibuses to Nuneaton, Rugby and Leicester.	Weekly flexibuses to Bedworth, Hinckley and Rugby.
Wixford	Mon to Sat hourly service to Redditch and Evesham. Evening and Sunday service. Saturday service to Worcester.	Evening service withdrawn.
Wolston	Mon to Sat half hourly service to Coventry and Rugby. Evening and Sunday service. Weekly flexibus to Rugby.	Evening service withdrawn. Flexibus withdrawn.
Wolverton	Mon to Sat two return journeys to Stratford. Twice weekly Flexibus to Solihull.	Reduced to twice weekly flexibus to Stratford and twice weely flexibus to Solihull

Wolvey	Mon to Sat hourly service to Coventry (two hourly via Bulkington) and Nuneaton. Weekly Flexibus to Nuneaton and Bedworth.	Reduced to two hourly service to Coventry and Nuneaton. Weekly flexibuses to Nuneaton, Bedworth, Rugby and Hinckley
Wood End	Mon to Sat hourly service to Atherstone and Birmingham International. Two hourly service to Tamworth. Evening and Sunday service. Once a week Flexibus to Hinckley.	Evening service withdrawn. Direct service to Birmingham International withdrawn. Replaced by hourly service to Coleshill and Tamworth. Reduced level of service to Atherstone. New weekly Flexibus to Atherstone. Flexibus to Hinckley withdrawn.
Woodlands	Mon to Sat frequent service to Rugby. Evening service. Mon to Sat urban Flexibus.	Evening service withdrawn.
Woodloes Park	Mon to Sat frequent service to Warwick and Leamington. Hourly service to Kenilworth and Coventry. Evening and Sunday service. Weekly Flexibus to Leamington.	Monday to Thursday evening service reduced. Flexibus withdrawn.
Wootton Waven	Mon to Sat hourly service to Stratford and Birmingham. Evening and Sunday service. Mon to Sat Flexibus service to Redditch.	No change.
Wroxall	Twice weekly Flexibus to Solihull. Weekly Flexibus to Leamington.	Reduced to twice weekly Flexibus to Solihull and twice weekly Flexibus to Leamington.

New Friday and Saturday Evening Bus Service Proposal

The new provision would utilise four new buses to service the following communities. These communities have been identified using the public transport service criteria. Overleaf is a map showing the proposed subsidised routes highlighted in red and the existing commercial routes highlighted in blue.

Settlement	Population	Bus Route
Atherstone	10338	765
Polesworth/Dordon	9667	765
Alcester	6898	25
Bulkington	6303	56
Studley	6257	25
Shipston-on-Stour	4456	23
Bidford-on-Avon	3978	25
Kingsbury	3710	118/119
Hartshill	3611	765
Grendon/Baddesley Ensor	3251	765
Long Lawford	2685	86
Binley Woods	2607	86
Wolston	2357	86
New Arley	1987	17
Ryton on Dunsmore	1672	86
Wood End	1633	118/119
Quinton	1503	23
Warton	1447	785
Welford-on-Avon	1319	23

Estimated Cost

Four additional evening vehicles would be required as follows:

Cost for one vehicle per evening = £130

Total cost for four vehicles per evening = £520

£520 x 104 days = **£54,080 per annum initial cost**

Subsidised services would bring in revenue which WCC would be able to keep and reinvest in to other areas.

Revenue estimate at £40 per evening per vehicle = £160 per evening

£160 x 104 days = **16,640 per annum revenue estimate**

Total funding required
£54,080 - £16,640 = £37,440 per annum

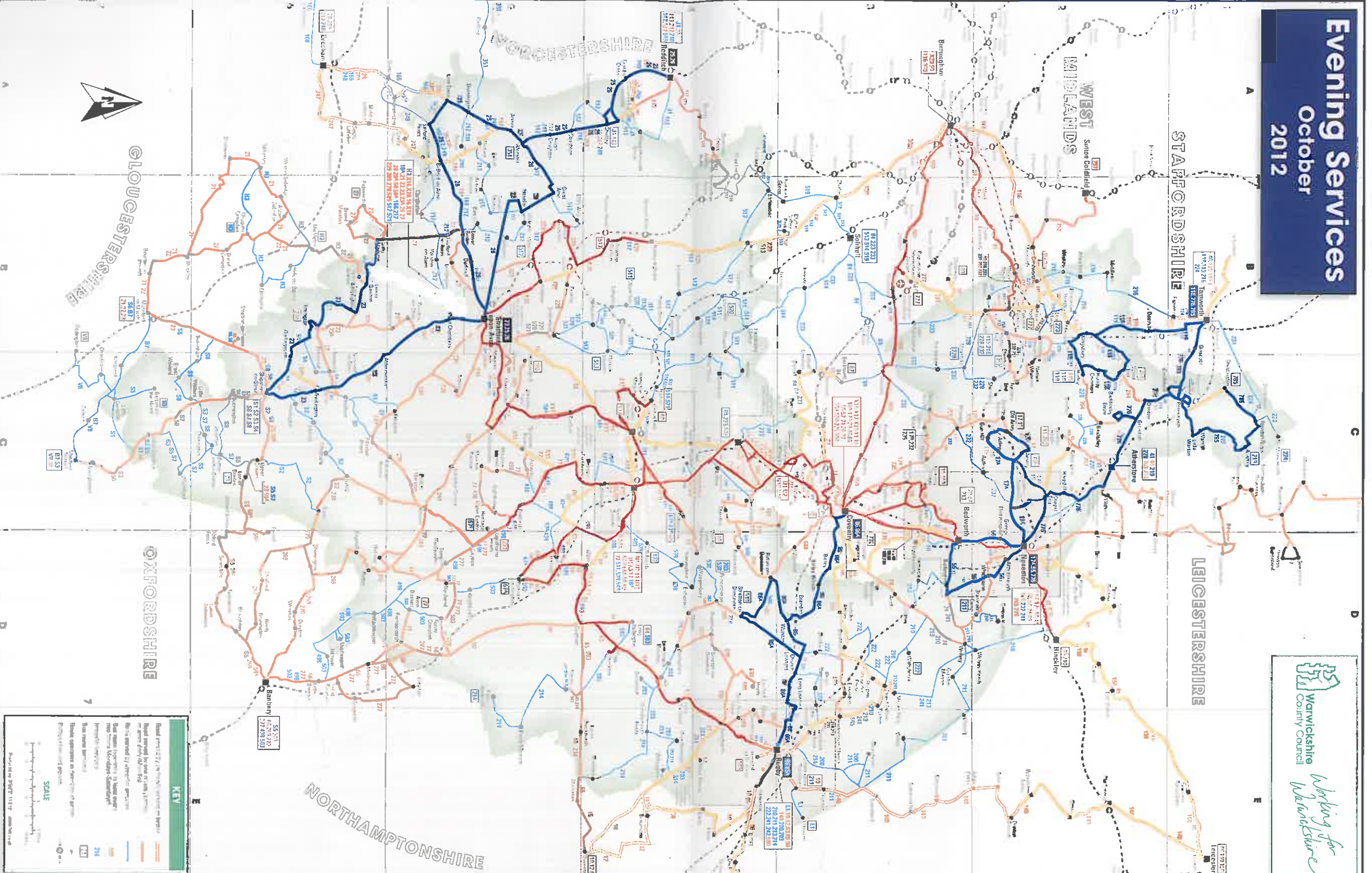
Evening Services

October 2012



Warwickshire
County Council

*Working for
Warwickshire*



GLoucestershire

OXfordshire

NORTHAMPTONSHIRE

WEST MIDLANDS

STAFFORDSHIRE

LEICESTERSHIRE

KEY

- Red lines: 21, 22, 23, 24, 25, 26, 27, 28, 29, 30, 31, 32, 33, 34, 35, 36, 37, 38, 39, 40, 41, 42, 43, 44, 45, 46, 47, 48, 49, 50, 51, 52, 53, 54, 55, 56, 57, 58, 59, 60, 61, 62, 63, 64, 65, 66, 67, 68, 69, 70, 71, 72, 73, 74, 75, 76, 77, 78, 79, 80, 81, 82, 83, 84, 85, 86, 87, 88, 89, 90, 91, 92, 93, 94, 95, 96, 97, 98, 99, 100
- Orange lines: 101, 102, 103, 104, 105, 106, 107, 108, 109, 110, 111, 112, 113, 114, 115, 116, 117, 118, 119, 120, 121, 122, 123, 124, 125, 126, 127, 128, 129, 130, 131, 132, 133, 134, 135, 136, 137, 138, 139, 140, 141, 142, 143, 144, 145, 146, 147, 148, 149, 150, 151, 152, 153, 154, 155, 156, 157, 158, 159, 160, 161, 162, 163, 164, 165, 166, 167, 168, 169, 170, 171, 172, 173, 174, 175, 176, 177, 178, 179, 180, 181, 182, 183, 184, 185, 186, 187, 188, 189, 190, 191, 192, 193, 194, 195, 196, 197, 198, 199, 200
- Blue lines: 201, 202, 203, 204, 205, 206, 207, 208, 209, 210, 211, 212, 213, 214, 215, 216, 217, 218, 219, 220, 221, 222, 223, 224, 225, 226, 227, 228, 229, 230, 231, 232, 233, 234, 235, 236, 237, 238, 239, 240, 241, 242, 243, 244, 245, 246, 247, 248, 249, 250, 251, 252, 253, 254, 255, 256, 257, 258, 259, 260, 261, 262, 263, 264, 265, 266, 267, 268, 269, 270, 271, 272, 273, 274, 275, 276, 277, 278, 279, 280, 281, 282, 283, 284, 285, 286, 287, 288, 289, 290, 291, 292, 293, 294, 295, 296, 297, 298, 299, 300
- Yellow lines: 301, 302, 303, 304, 305, 306, 307, 308, 309, 310, 311, 312, 313, 314, 315, 316, 317, 318, 319, 320, 321, 322, 323, 324, 325, 326, 327, 328, 329, 330, 331, 332, 333, 334, 335, 336, 337, 338, 339, 340, 341, 342, 343, 344, 345, 346, 347, 348, 349, 350, 351, 352, 353, 354, 355, 356, 357, 358, 359, 360, 361, 362, 363, 364, 365, 366, 367, 368, 369, 370, 371, 372, 373, 374, 375, 376, 377, 378, 379, 380, 381, 382, 383, 384, 385, 386, 387, 388, 389, 390, 391, 392, 393, 394, 395, 396, 397, 398, 399, 400

Scale: 1:50,000

Map produced by PWT 11/12 © 2012

Scrutiny Action Plan

Recommendation	PfH Comments	Cabinet Comments	Target Date for Action	Lead Officer	OSC Update	Progress Notes
R1 The Task and Finish Group recommend that no further reductions are made to the passenger transport support budget.	Comments of the PfH from the informal meeting.	accepted, rejected, reasons why.	To be set by senior officer during informal meeting.	To be assigned by senior officer during informal meeting.	6 months from implementation.	The Lead Officer to include progress updates on the implementation of the recommendation.
R2 The Task and Finish Group recommend that the proposal detailed in Appendix C for funding for a new set of Friday and Saturday evening bus services is adopted as part of Warwickshire County Council's 2013/14 budget.						
R3 The Task and Finish group recommend that officers review the new network six months after it is implemented and update Communities Overview and Scrutiny Committee on how the service is performing.						