

# The Journey of Place



Place based JSNAs produced 2018-2020



Joint HWBB strategy adopted march 2021



Place Priorities:

- North
- Rugby
- South



ICS Strategy developed Dec 22



Place in 2023 and our ask to HWBB

TORs agreed March 2020



HWBB Strategy - population health framework adopted



ICS formed July 2022



What have we learned from working at place?



# What does HWBB Strategy say about Place?



- We are taking a place-based approach to delivery. In Warwickshire, our 3 Places are:
  - North – covers North Warwickshire Borough and Nuneaton and Bedworth Borough
  - Rugby – covers Rugby Borough
  - South – covers Stratford on Avon District and Warwick District
- Leadership and accountability are key to knowing if we are getting things right. The HWBB will have oversight of progress against our strategic ambitions. The direction of travel indicators will be developed into an outcomes dashboard for the HWB, and the HWB will receive an annual performance report on progress.
- Each HWP in Warwickshire will develop an implementation plan with clear performance measures based around the four components of the population health framework.
- The HWP action plans will be tailored to meet the specific needs of each place and will routinely report to the HWB.
- Local HWPs will work with the HWB Executive Officer Group to ensure wider determinants and access to services are addressed collectively at a local level whilst contributing to the overall vision for the system. This will enable the places to be the future engine room of the NHS.

# Progress to date with Place Partnerships



## Warwickshire North

- Mapping exercise undertaken to review delivery priorities, aligned to population health framework
- Delivery group completed quality improvement project designed to provide health coaching and support to high intensity healthcare users

## Rugby

- Plans to review and refresh terms of reference and agree model for delivering priorities i.e. task and finish groups for Rugby Town Centre project, Children and Young People mapping

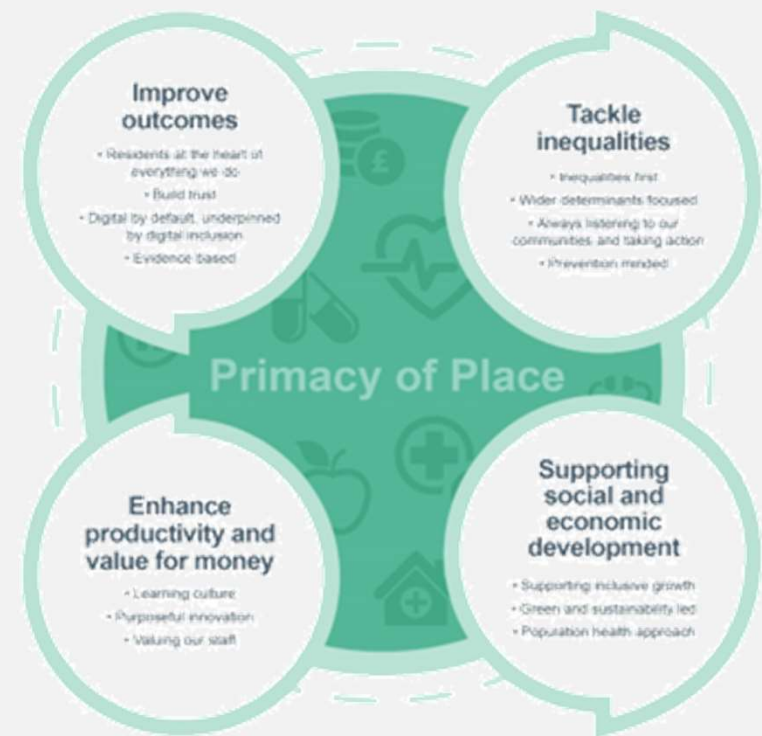
## South Warwickshire

- Utilising ICB funding to mobilise mental health project to support Children in Crisis and to carry out engagement to raise the profile of Place within the VCSE
- Place Development Programme, culminating in a Peer Review of Place...

# What does the draft ICS Strategy say about Place?



- Much of the activity to integrate care and improve population health will be driven by organisations working together in our places, and through multi-disciplinary teams working together in our neighbourhoods.
- All partners in the system have signed up to four commitments that will define how we work together to achieve the four national aims and our system priorities.
- These include an underpinning commitment to the primacy of place in our decision-making and activity, whilst recognising the opportunity of system-wide working to deliver value at scale where appropriate.



# Lessons learnt from South Place Peer Review



- Many strengths were highlighted and there is a clear commitment to Place working from partners
- The focus moving forward is on continuing to mature the partnership, refine the vision and broaden place work further to strengthen collaboration
- This includes considering what analyst support will look like, and how to turn findings into interventions
- There are also key opportunities to look at what sits at system, care collaborative, and place (and indeed below to PCN/ GP practices) and how we boost influence at ICB and how to tap into collective resources for population health

# The Journey of Place



Place based JSNAs produced 2018-2020

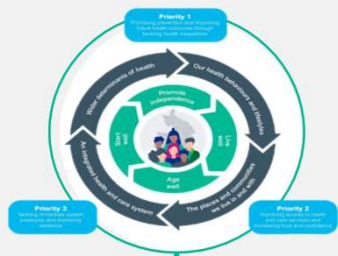


Joint HWBB strategy adopted march 2021



Place Plans:

- North
- Rugby
- South



ICS Strategy developed Dec 22

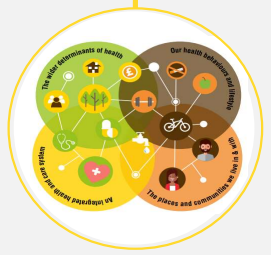


Place planning for 2023 and HWBB support...

TOR agreed March 2020



HWBB Strategy - population health framework adopted



ICS formed July 2022



What have we learned from working at place?



# Place in 2023 and support from HWBB



1. **Resources to deliver** – how do we ensure Places receive resource to carry out activity that supports the commitments within the HWB Strategy and ICS Strategy?
2. **Making connection back to system** – how do we ensure that there is connectivity between places and the wider ICS?
3. **Connecting to communities** – Places are best fit to engage with communities, how do we utilise this to ensure two-way communication between communities and Place and the wider ICS?
4. **Sustainability** – how to make sure that activity at place transitions to business as usual?



# The Journey of Place



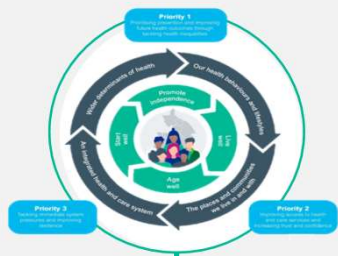
Place based JSNAs produced 2018-2020



Joint HWBB strategy adopted march 2021



Place Plans:  
 • North  
 • Rugby  
 • South



ICS Strategy developed Dec 22

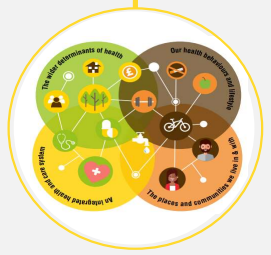


Place planning for 2023 and HWBB support...

TOR agreed March 2020



HWBB Strategy - population health framework adopted



ICS formed July 2022



What have we learned from working at place?

