

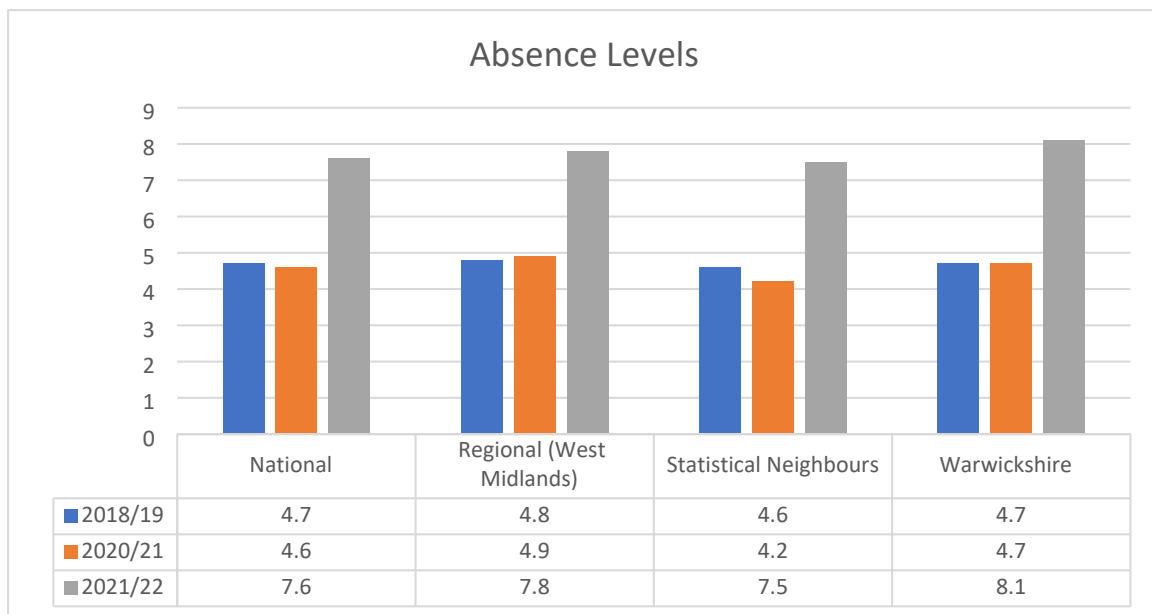
## Appendix 1 – Warwickshire’s School Attendance Data 2021/22.

- The DfE published the full academic year 2021/22 data on 16 March 2023.
- School attendance data is not available for academic year 2019/20, as the DfE did not collate a full data set due to COVID-19

### Overall Absence

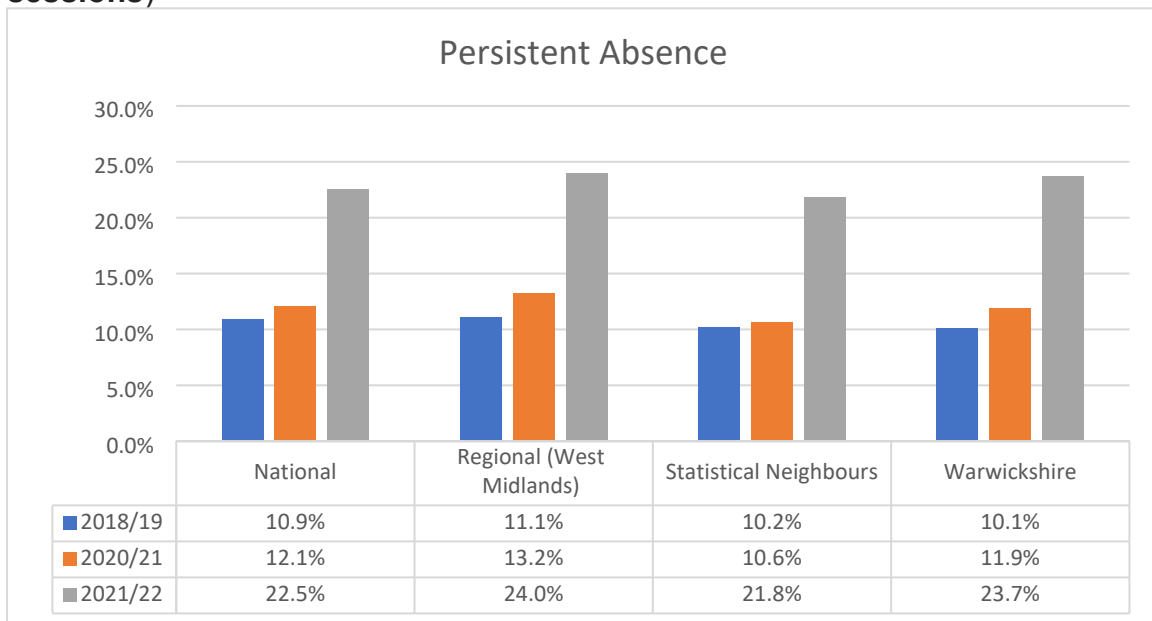
**Table 1- School Absence Levels 2018/19 – 2021/22.**

Table 1 shows Warwickshire’s overall absence rate mirrors the national trend.



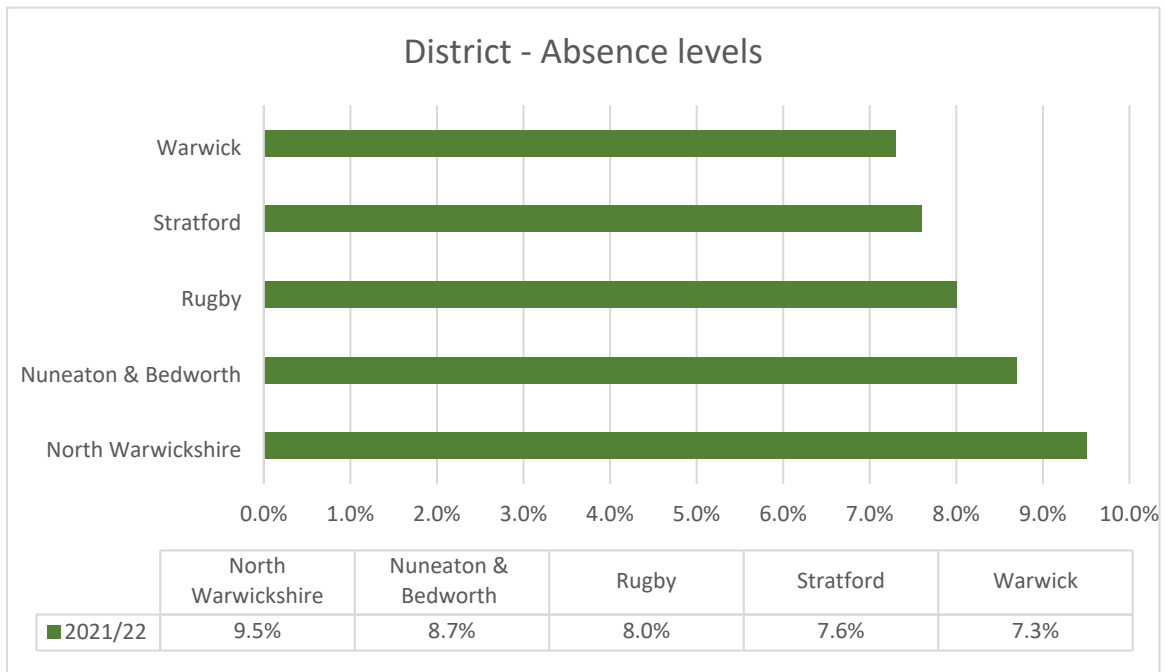
## Persistent Absence

**Table 2- Persistent Absence Levels (% of pupils who missed 10% or more sessions)**

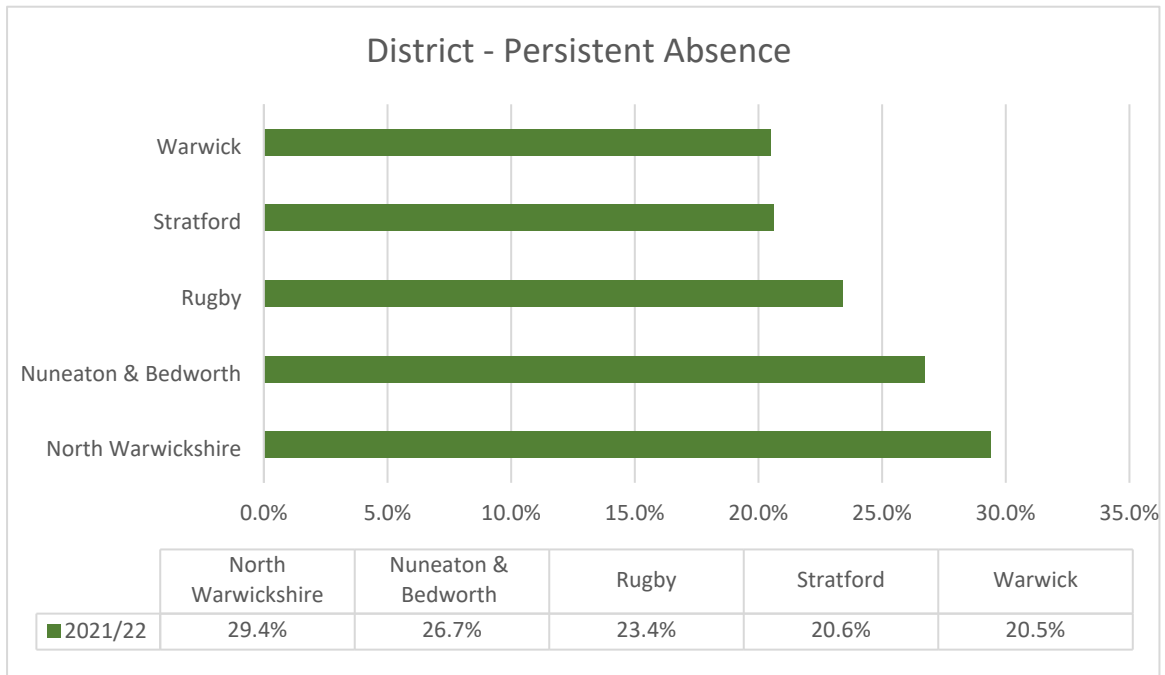


## Absence by District

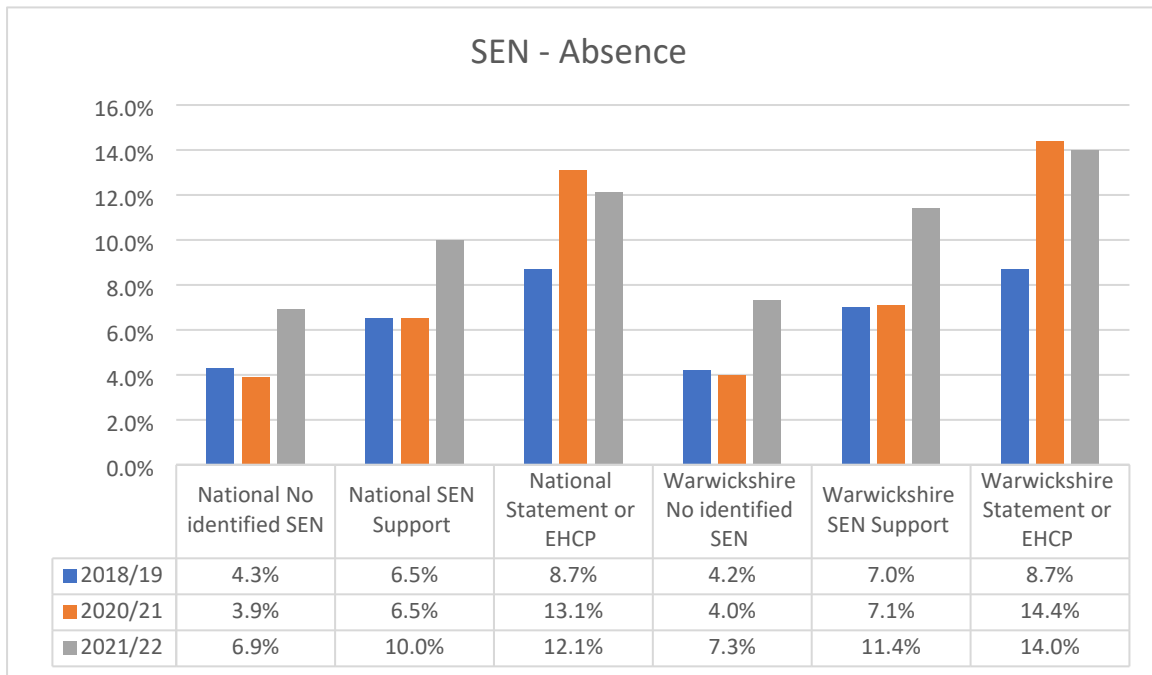
**Table 3- Overall Absence at District level**



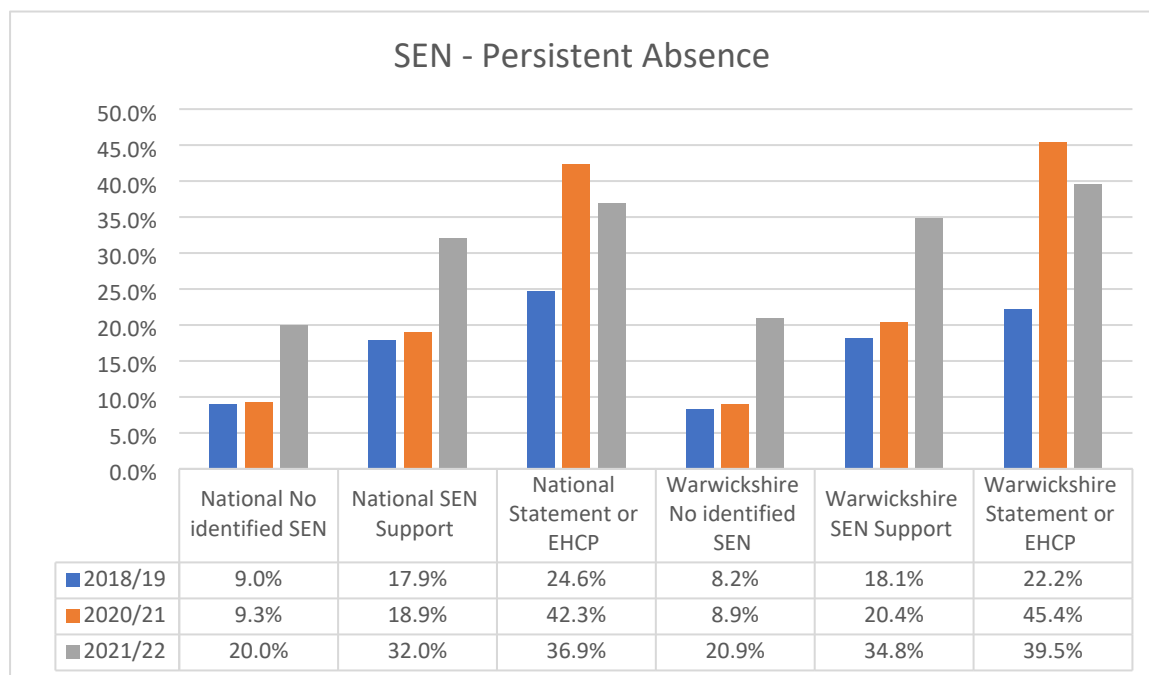
**Table 4- Persistent Absence at District Level**



**Table 5 - Absence levels for children with Special Educational Needs (SEND)**



**Table 6 – Persistent Absence levels for children with Special Educational Needs (SEND)**



### **Absence Codes**

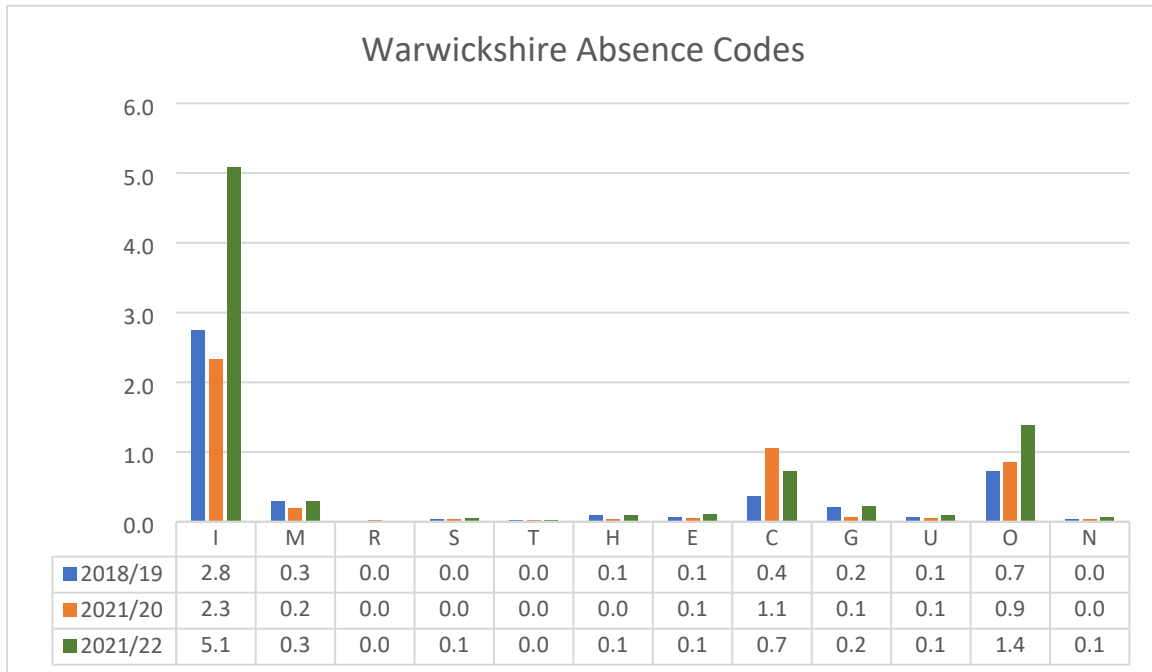
Schools are required to use the appropriate absence codes when taking the attendance register. The table below identifies the current absence codes and definitions.

**Table 7 – Absence codes**

<b>Code</b>	<b>Definition</b>	<b>Statistical Meaning</b>
I	Illness	Authorised absence
M	Medical appointments	Authorised absence
R	Religious Observance	Authorised absence
S	Study Leave	Authorised absence
T	Traveller absence	Authorised absence
H	Holiday approved	Authorised absence
E	Excluded	Authorised absence
C	Leave of Absence – granted by the school	Authorised absence
G	Holidays not approved	Unauthorised absence
U	Late after register	Unauthorised absence
O	Other unauthorised absence	Unauthorised absence
N	Absence reason unknown	Unauthorised absence

**Table 8 – Warwickshire’s use Absence Code**

The use of absence coding by schools over the last three comparable years shows the use of the code ‘I’ (illness – authorised absence) has doubled from 2020 to 2021. The use of the ‘O’ code (absent without authorisation) has also increased which indicates schools are increasing their challenge to absence.



**Table 9 - Use of Absence codes compared to national**

