

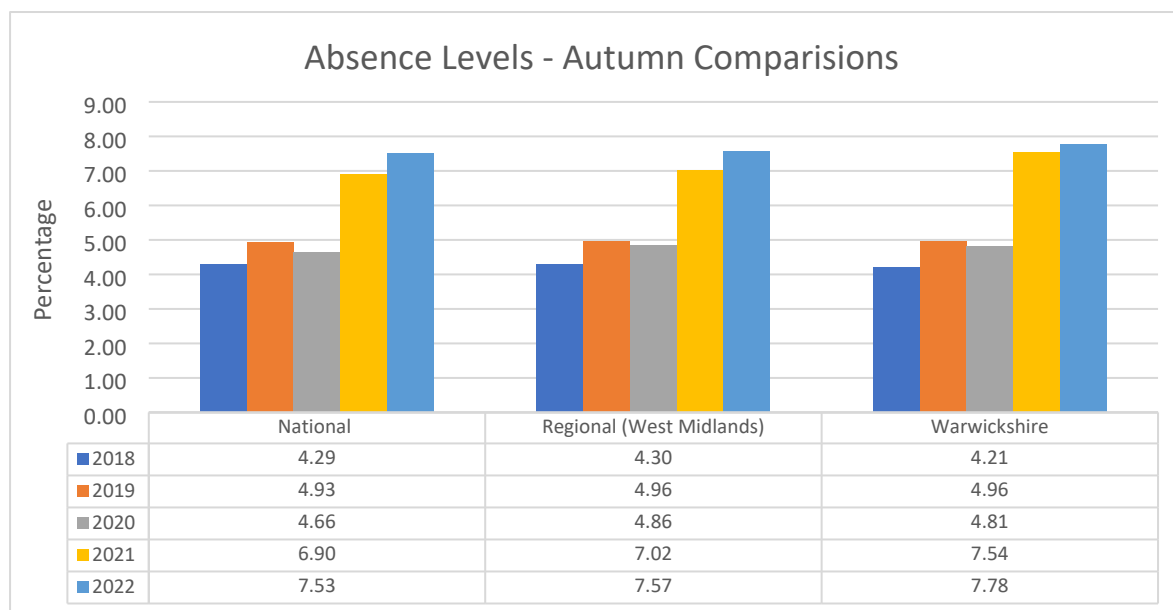
The DfE published the Autumn 2022 data on 18 May 2023.

Graph Source

The following graphs are collated from the DfE released data for Autumn Term 2018, 2019, 2020, 2021, 2022.

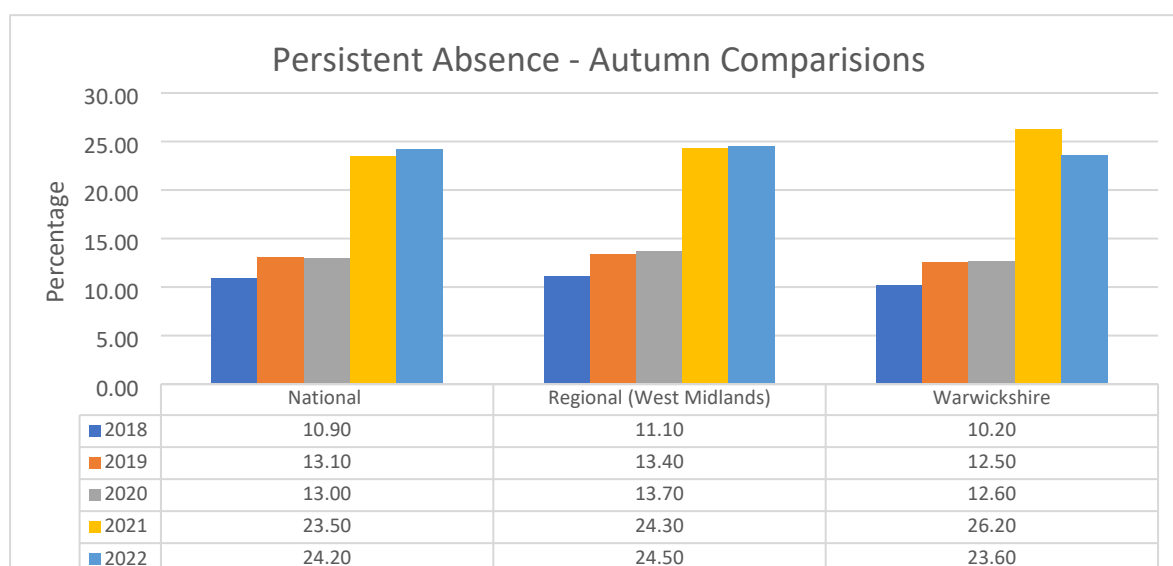
Overall Absence

Table 1 shows Warwickshire’s overall absence rate mirrors the national trend.



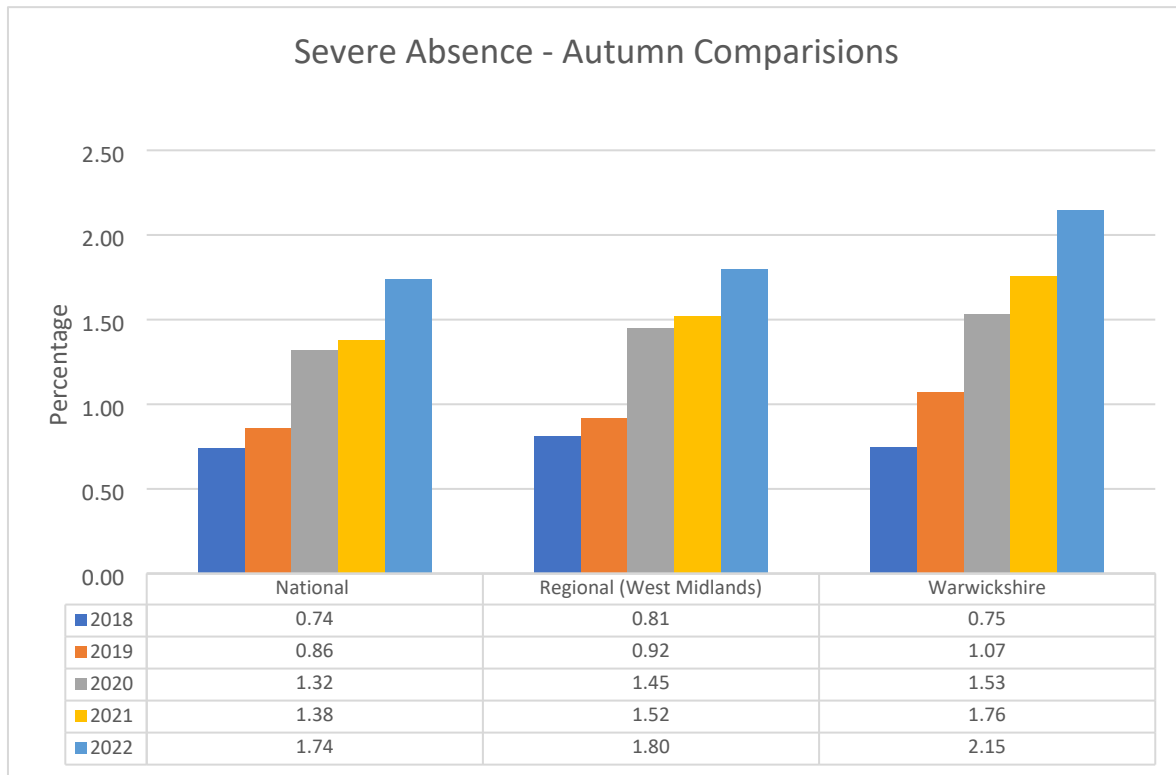
Persistent Absence

Table 2- Persistent Absence Levels (% of pupils who missed 10% or more sessions)



Severe Absence

Table 3- Severe Absence Levels (% of pupils who missed 50% or more sessions)



Absence by District

Table 4 - Overall Absence at District level

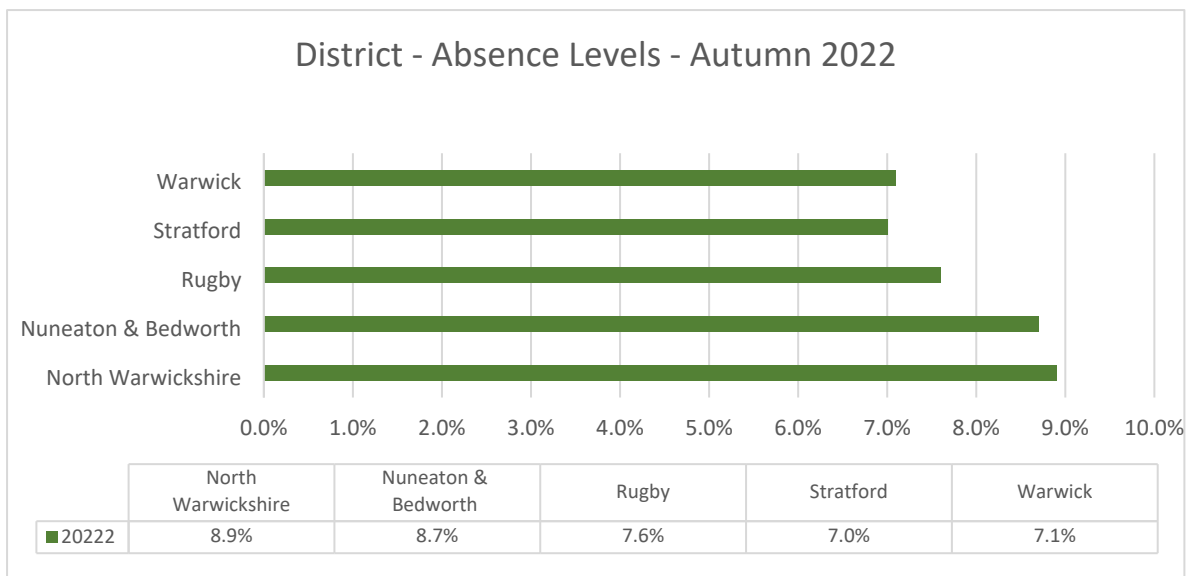


Table 5 - Persistent Absence at District Level

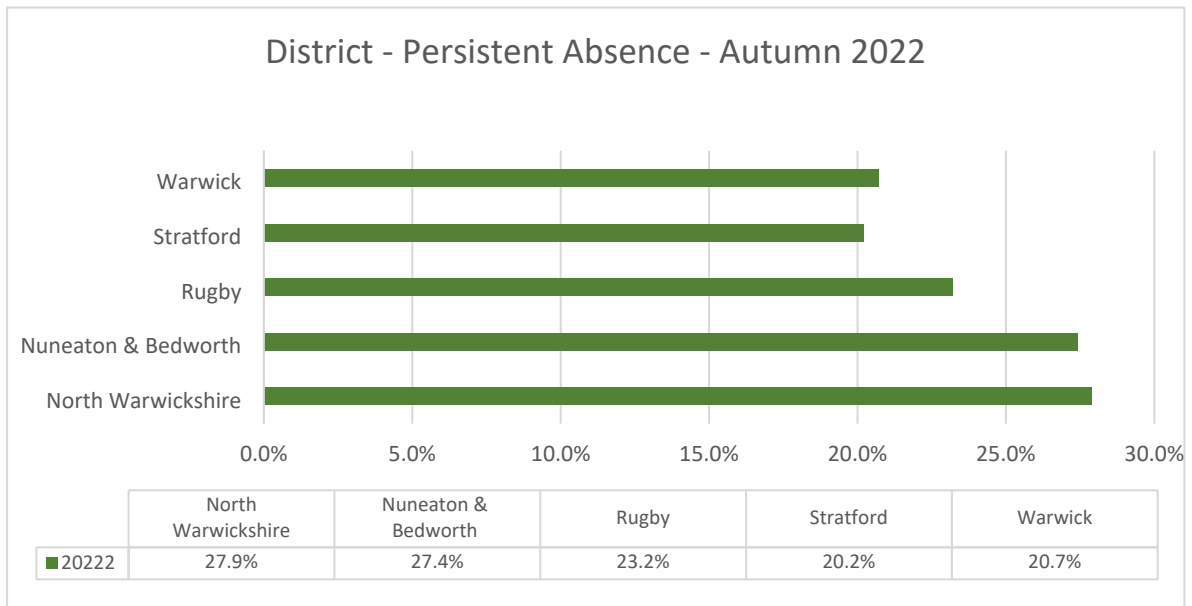


Table 6 - Absence levels for children with Special Educational Needs (SEND)

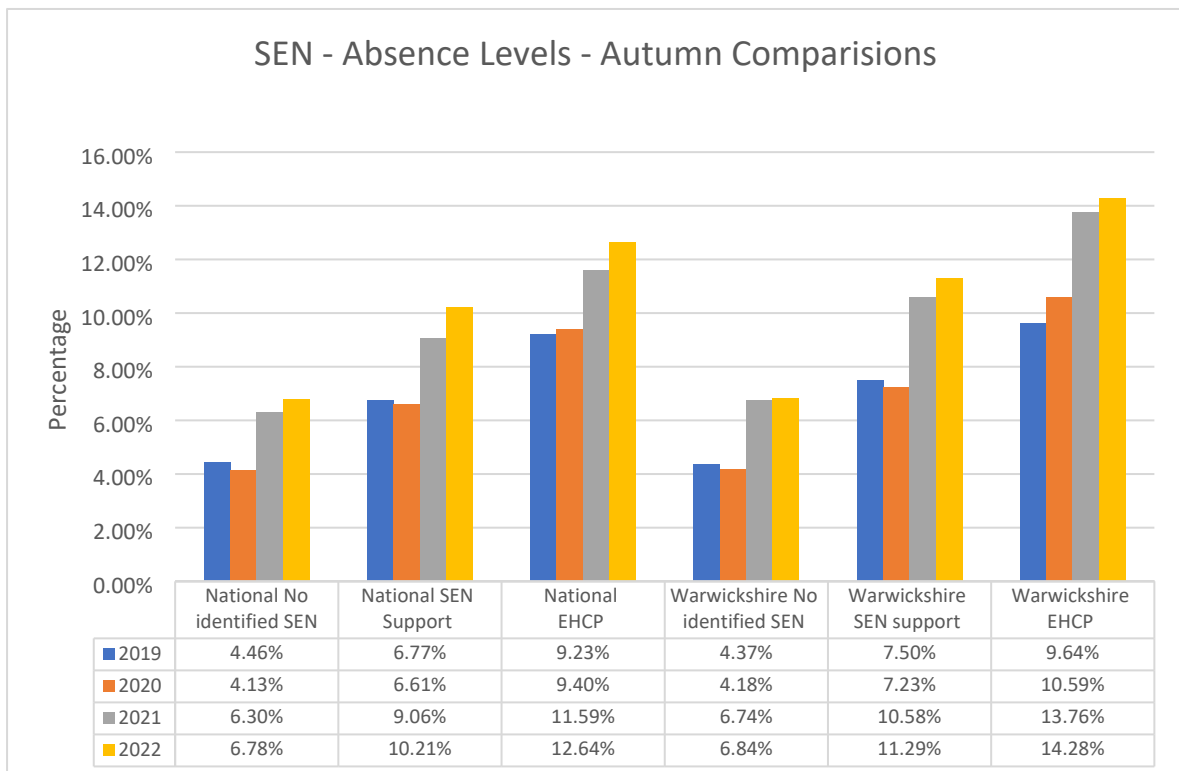


Table 7 – Persistent Absence levels for children with Special Educational Needs (SEND)

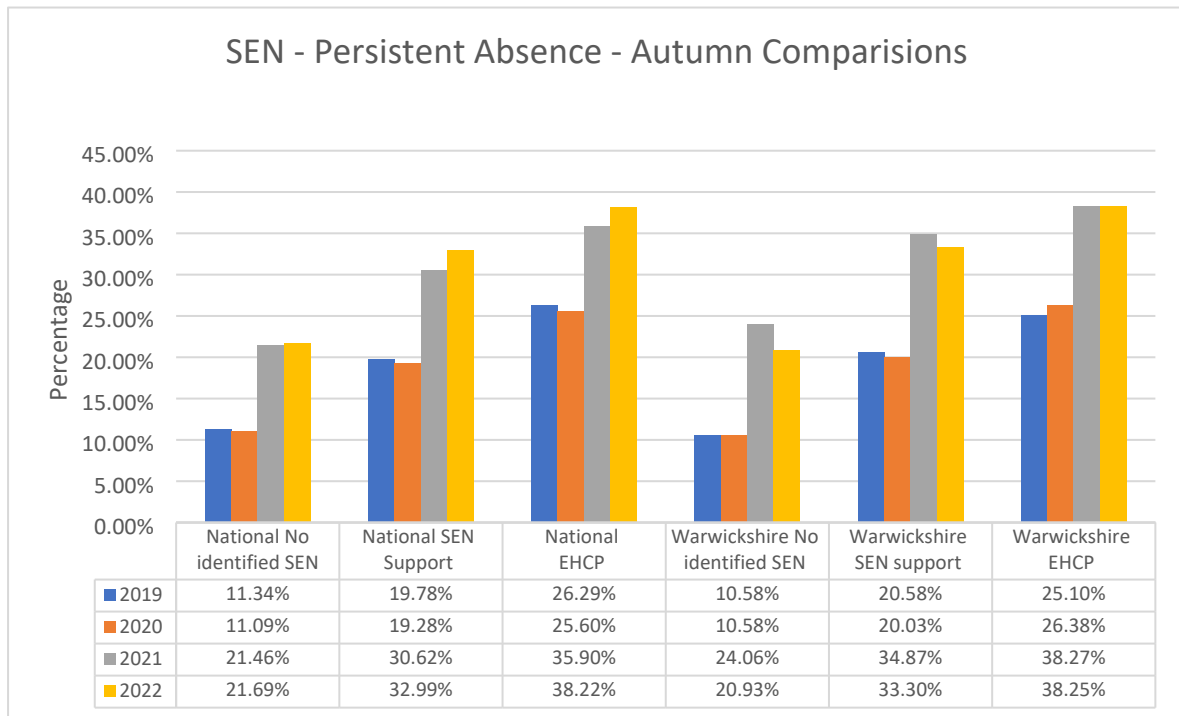
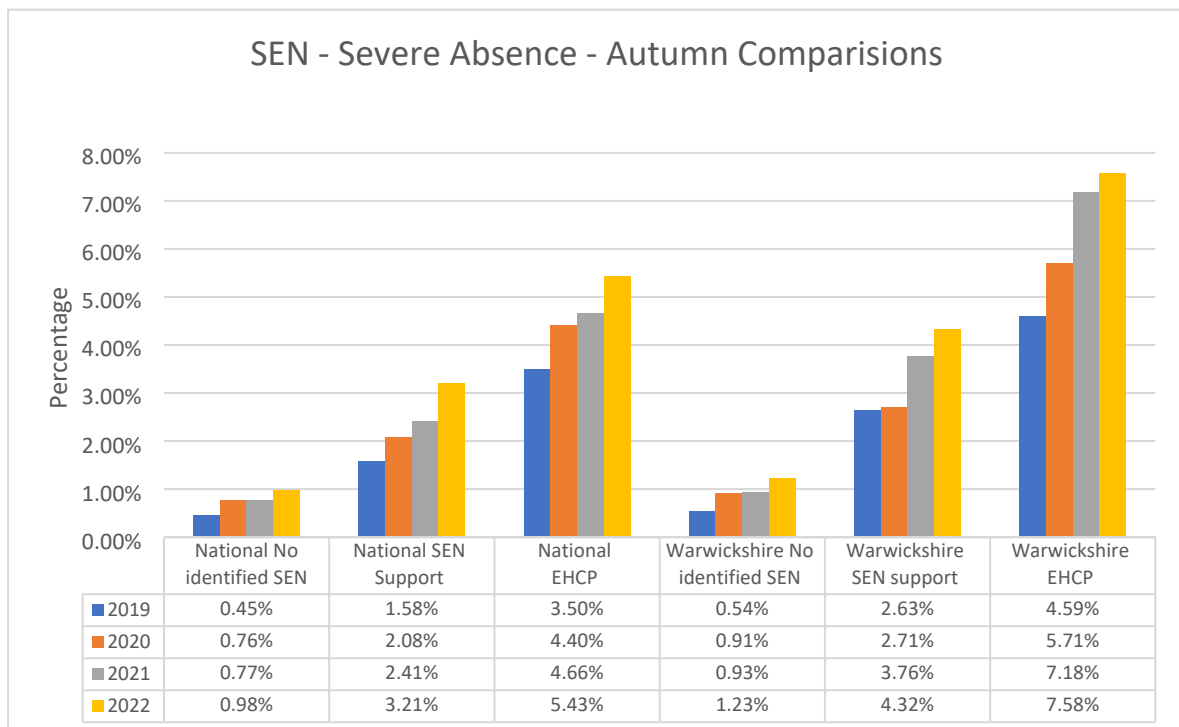


Table 8 – Severe Absence levels for children with Special Educational Needs (SEND)



Absence Codes

Schools are required to use the appropriate absence codes when taking the attendance register. The table below identifies the current absence codes and definitions.

Absence codes

Code	Definition	Statistical Meaning
I	Illness	Authorised absence
M	Medical appointments	Authorised absence
R	Religious Observance	Authorised absence
S	Study Leave	Authorised absence
T	Traveller absence	Authorised absence
H	Holiday approved	Authorised absence
E	Excluded	Authorised absence
C	Leave of Absence – granted by the school	Authorised absence
G	Holidays not approved	Unauthorised absence
U	Late after register	Unauthorised absence
O	Other unauthorised absence	Unauthorised absence
N	Absence reason unknown	Unauthorised absence

Table 9 – Warwickshire’s use Absence Code

The use of absence coding by schools since 2019 shows the use of the code ‘I’ (illness – authorised absence) had increased since pre covid. However, this has reduced in Autumn 2022 as schools returned to challenging parentally condoned absence. However, there is still some movement in this when compared to National trends. The use of the ‘O’ code (absent without authorisation) has also increased which confirms the continued challenge to absence by schools.

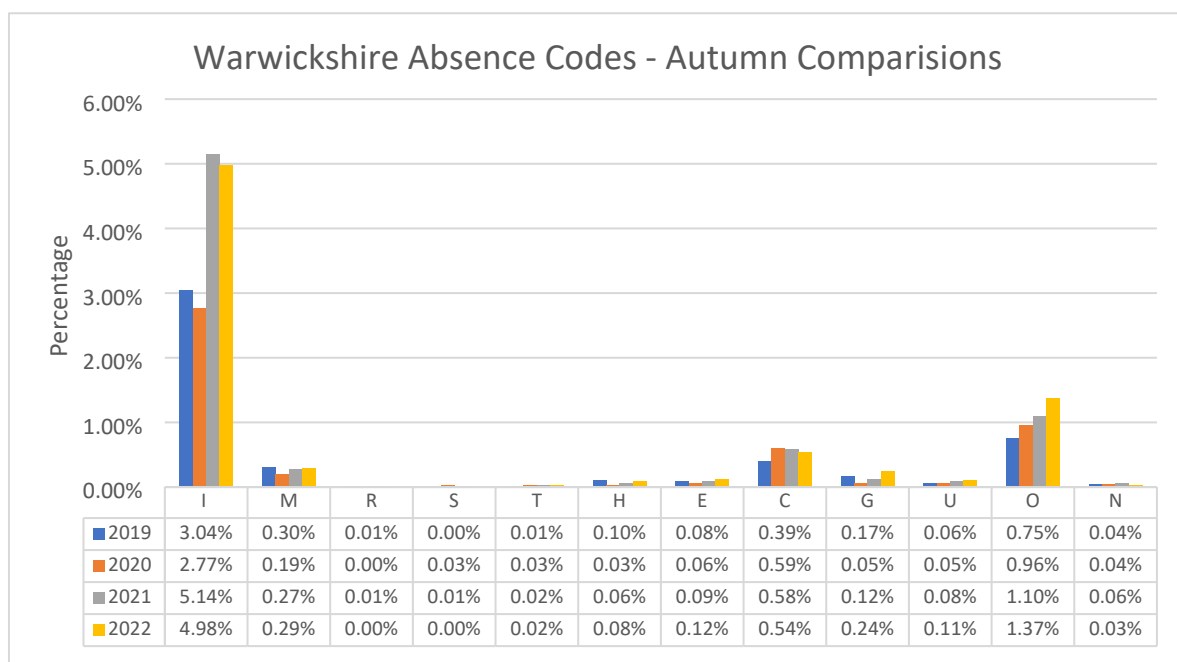


Table 10 - Use of Absence codes compared to national

