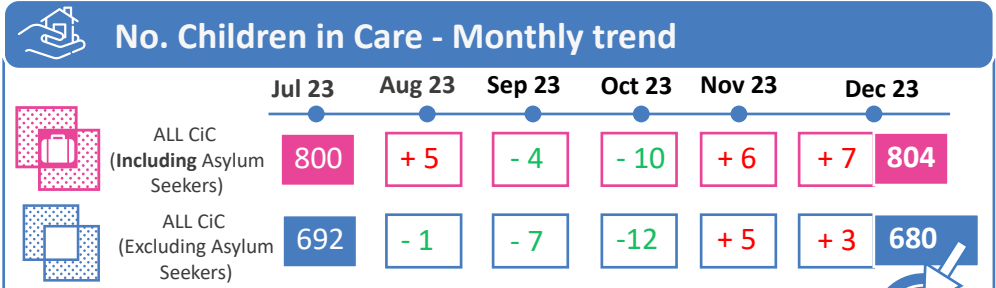




804
Children in Care

An increase of **7 Children in Care** since 30 November 2023



At 31 December 2023, Warwickshire's Children in Care population increased by 7 to 804, whilst the no. of CiC excluding asylum seekers increased by 3 to 680.

630 CiC target for 2023/24



Children in Care Placement Type

WCC Foster Carer (inc Family and Friends carers)

323 children (40.0%); which is a decrease of 7 children on the previous month end.

Placed for Adoption

18 children (2.2%) of all CiC at 30/11/2023; an increase of 1 child since 30/11/2023.

Agency Foster Carer

185 CiC (23.0%); an increase of 4 children since 30/11/2023

Residential Home or Supported Accommodation

175 children (21.8%); an increase of 4 children since 30/11/2023

Legal Status of Children in Care as at 31 December 2023

52.1% (419) of CiC are on a **Full Care Order**; this is a decrease of 5 children since 30/11/2023.

9.6% (77) of CiC are on an **Interim Care Order**; this is a decrease of 4 children since the previous month end.

5.0% (40) of CiC are on a **Placement Order**; this is an increase of 3 children since 30/11/2023.

33.1% (266) of CiC are subject to **S20 Accommodation**; this is an increase of 14 children since the end of November 2023.

Leaving Care Activity Status

As at 31 December 2023, of those Relevant and Former Relevant Care Leavers (aged 16 - 21) ...

84.2% had a contact within the last 8 weeks

79.5% were in suitable accommodation

46.1% were in EET (Employment, Education & Training)

CiC out of county as at 31st December 2023

18.3%

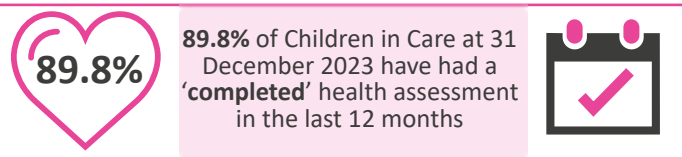
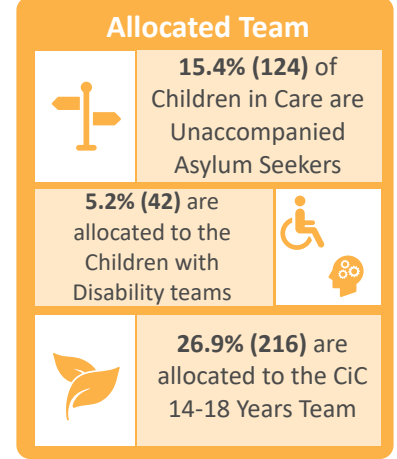
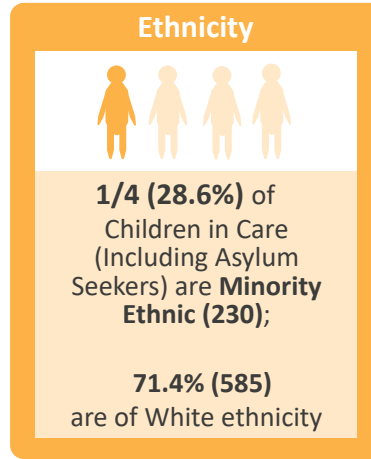
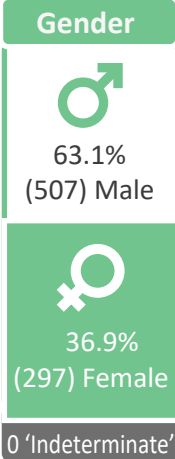
(147) of CiC were placed outside the LA boundary and more than 20 miles from where they used to live

NB. Please note that this is a quarterly measure

CiC 'Missing' or 'Away from placement without authorisation'

29 children in care were missing (71 missing episodes)

During December 2023 there were **71 episodes** of a child missing or away from their placement without authorisation. This related to **29 individual children** with **12 children** having multiple missing episodes during the month.



% of CiC accommodated during the month (who remained accommodated) and who had their IHA within 20 working days (Monthly trend)

