

Health and Wellbeing Board

15 May 2024

Place-based HWBB Partnership Plans

Recommendation

That the Health and Wellbeing Board notes and comments on the verbal updates provided by representatives from the place-based HWBB Partnerships.

1. Executive Summary

- 1.1. Warwickshire's Health and Wellbeing Strategy (HWS) 2021-2026 is underpinned by the King's Fund population health framework (figure 1). The framework demonstrates that to improve health and wellbeing outcomes for people, we must take action in a holistic way, across organisations, disciplines, and sectors. This population health view is based on robust evidence that healthcare influences approximately 20% of our health, whilst the wider determinants of health, our health behaviours and lifestyles, and the places and communities we live in and with influences approximately 80%.

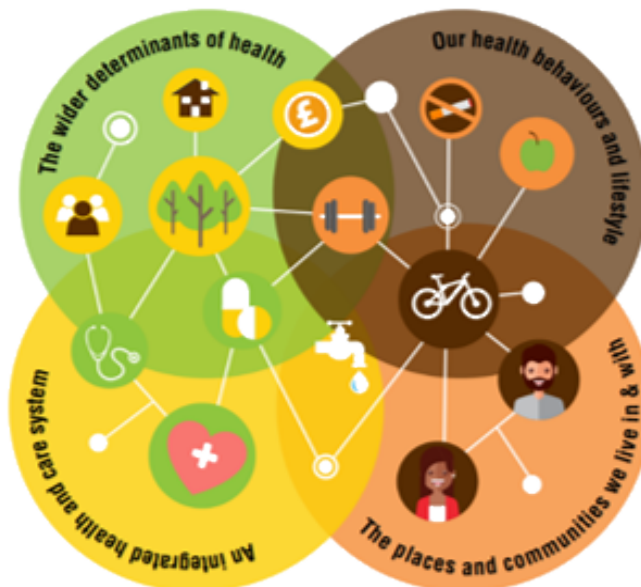


Figure 1: King's Fund Population Health Framework

- 1.2. The HWS sets out how we will take a place-based approach to delivery via the three HWBB Partnerships for Warwickshire North, Rugby, and South Warwickshire. This is to ensure that delivery is tailored to meet the local evidenced need and built upon the strengths within each geographical Place.

- 1.3. The priorities within the HWB relate to:
- Helping children and young people have the best start in life.
 - Helping people to support their mental health and wellbeing with a focus on prevention and early intervention.
 - Reducing inequalities in health and the wider determinants of health.
- 1.4. Each place-based HWBB Partnership makes informed decisions on how it will support delivery of these priorities via the Partnership mechanism. The priorities of each Place are in table 1.

Table 1: Priorities at Place

Warwickshire North Partnership	Rugby Partnership	South Warwickshire Partnership
<ul style="list-style-type: none"> • Access to services • Mental health and wellbeing • Children and young people • Wider determinants of health • Healthy lifestyles and long-term conditions 	<ul style="list-style-type: none"> • Improving access to health services via: <ul style="list-style-type: none"> ○ Town centre regeneration ○ Opportunities at St Cross ○ Understanding the barriers to accessing services 	<ul style="list-style-type: none"> • Cost of living • Mental health and wellbeing • Climate change

- 1.5. Each HWBB Partnership has prepared a verbal presentation on progress with Place Plans over the past twelve months.
- 1.6. In addition to progress with Place Plans, there have also been changes to the membership and governance of HWBB Partnerships, including:
- To strengthen the links between the Creating Opportunities / Levelling Up agenda a senior Warwickshire County Council (WCC) officer has joined each Partnership. The Creating Opportunities / Levelling Up Plans have been incorporated into the HWBB Delivery Plan 2024-25, reflecting the role this agenda plays in improving health outcomes and reducing inequalities in health within each Place.
 - To respond to the formation of the Warwickshire Care Collaborative, each Place has been considering how it will most effectively inform Collaborative commissioning activity, for example through reviewing terms of reference and governance mechanisms.

2. Financial Implications

There are no financial implications linked to the recommendations.

3. Environmental Implications

None.

4. Timescales associated with the decision and next steps

4.1. Annual review of activity is on the HWBB Forward Plan for May 2025.