

# Overview of the Better Care Fund (BCF) in Warwickshire

2 May 2024

Rachel Briden, Integrated Partnership Manager, WCC



Warwickshire  
Health and  
Wellbeing



To provide for Health and Wellbeing Board members:

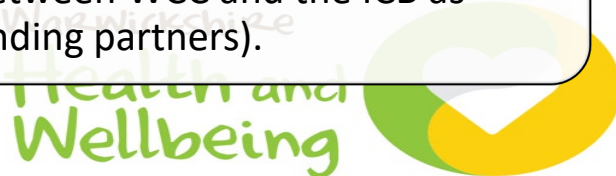
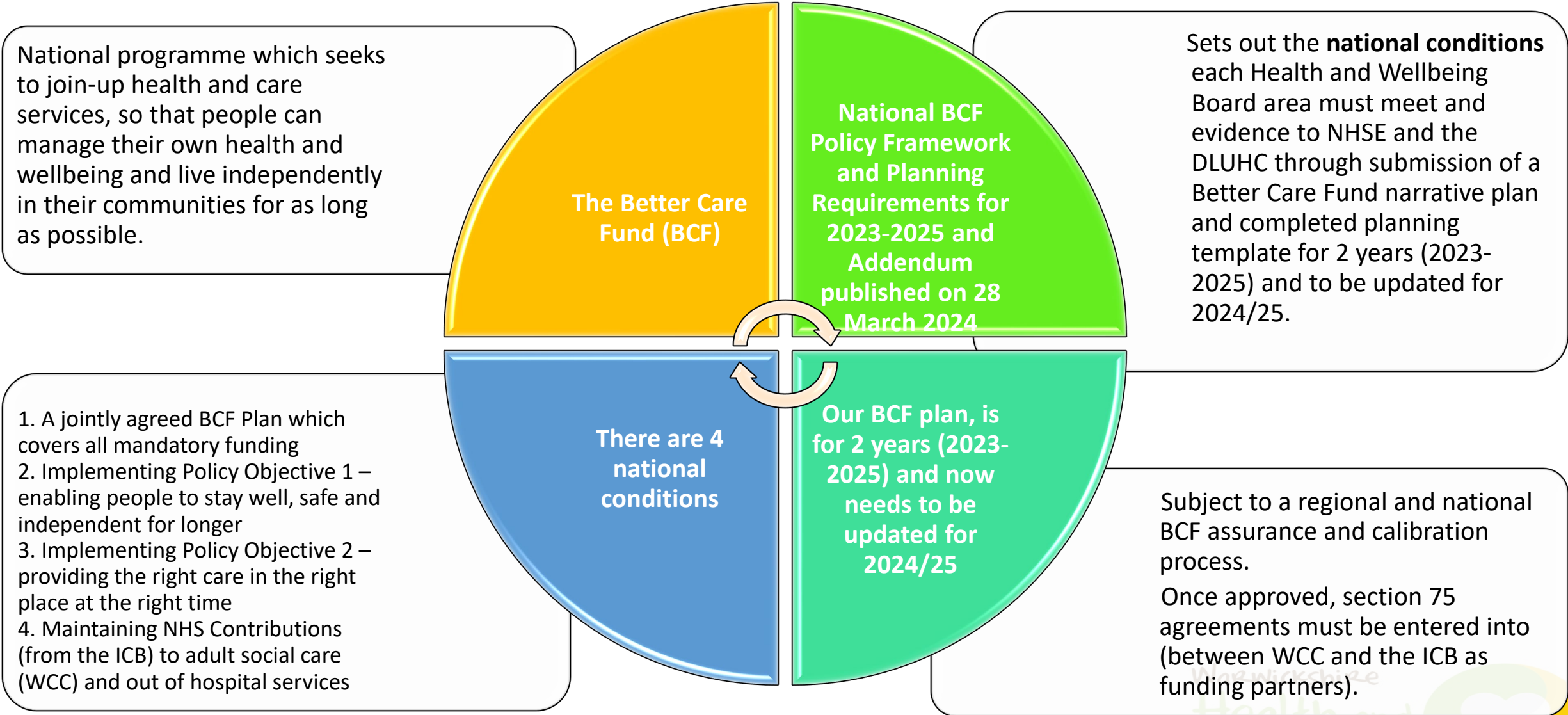
- an overview of the main purpose and principles of the Better Care Fund,
- a reminder of the national BCF Policy Framework and requirements,
- an update on how the funding works,
- a reminder of the core services funded,
- the impact and benefits to patients, the NHS and social care
- 2-year delivery plan, and
- proposed changes to governance arrangements



# Main Purpose and Core Principles of the BCF

- The Better Care Fund is a partnership programme between Department for Levelling Up, Housing and Communities, NHS England, the LGA and Department of Health and Social Care.
- The programme has established pooled budgets between ICBs and Local Authorities at place level to drive integration.
- Every Health and Wellbeing Board is required to submit a BCF plan with the aim of working towards improved performance against the two programme objectives.
- BCF pooled funds must be placed into a section 75 agreement(s) in each HWB area





# How the funding works

The National Policy Framework and Planning Requirements apply to the ‘pooled budget’ (the minimum budget each area must jointly agree) - £76.5m. Additional conditions also apply, specific to each grant/fund.

NHS budget which funds core NHS and local authority services

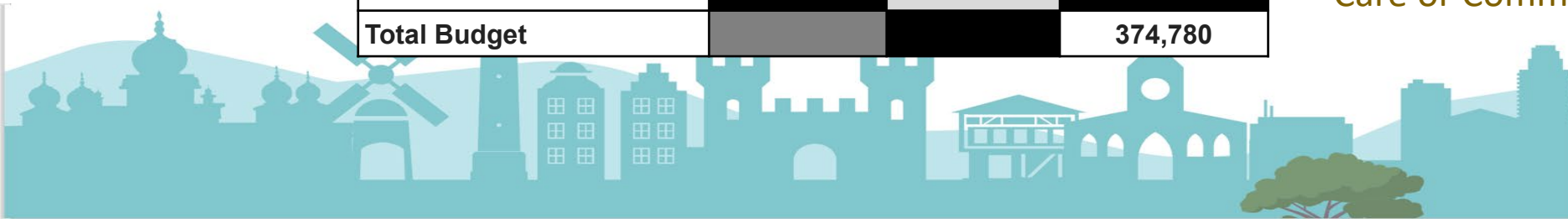
Funds received directly by the local authority

	2024/25		
	Pooled Contribution	Aligned Allocation	Total Budget
	£'000	£'000	£'000
Minimum NHS ring-fenced from ICB allocation	47,762	116,799	164,562
Disabled Facilities Grant (DFG)	5,589	-	5,589
Warwickshire County Council Improved Better Care Fund (iBCF)	15,133	-	15,133
ICB Discharge Fund	4,970	-	4,970
WCC Discharge Fund	3,536	-	3,536
Warwickshire County Council	-	180,988	180,988
<b>Total Pooled Contribution</b>	<b>76,990</b>		
<b>Total Additional Aligned Allocation</b>		<b>297,788</b>	
<b>Total Budget</b>			<b>374,780</b>

National funding allocated for the District & Borough Councils delivered via HEART - The Home Environment Assessment & Response Team, a partnership venture of all 6 Councils in Warwickshire which provides tailored advice and support on a range of issues including:

- Home aids and adaptations
- Housing conditions, repairs and safety matters
- Benefits, grants or loans for essential building works

The majority of the budget is either WCC's or the ICB's base budgets covering Adult Social Care or Community Health.



## Services delivered

- The majority of the NHS contribution in the pooled budget funds core local authority and NHS services, in place since 2016 e.g.

Service	Budget	Delivered by NHS or LA
Out of hospital collaborative	£17.2m	NHS service delivered by SWFT
Contribution to Domiciliary Care costs	£9.2m	Delivered by the local authority
Integrated Community Equipment Service	£6.5m	Service commissioned by the local authority for health and social care
Joint Funded Continuing Health Care	£6.2m	Service delivered by the ICB supporting social care and health
Reablement	£5.5m	Service delivered by the local authority

- In addition, almost 68% of the Improved Better Care Fund (fund received directly into the local authority since 2017) contributes to social care base budget pressures due to increases in fee rates, demand and population
- New initiatives such as the Community Recovery Service and the consolidation of Pathway 2 Discharge to Assess short term beds are being funded by the Discharge Fund



## Impact

- Schemes and services funded by the Better Care Fund contribute, along with many other initiatives, to improving or maintaining people's independence, reducing demand on the NHS and on long-term social care.
- If these schemes were not in place or reduced, there would be a significant impact on achieving these already challenging ambitions.
- The impact is currently measured by the following national indicators:
- In 2023/24:
  - (to end of Feb 24 only), 5,038 admissions were identified as avoidable. This equates to c15 per day across the 3 acute hospitals (in Coventry and Warwickshire) and is a 4.6% increase compared to the previous year,
  - 95% of patients were discharged to their usual place of residence, which continues the good performance from previous years and meets the national ambition,
  - permanent admissions to residential care at 923 remained similar to 901 in the previous year, and
  - (to end of Feb 24 only), there were 2,587 emergency admissions due to a fall, which equates to c8 per day across the 3 acute hospitals and is 8.5% higher than the same period the previous year.



## BETTER TOGETHER (BETTER CARE FUND) PROGRAMME 2023/25

	MANAGING DEMAND	PROMOTING INDEPENDENCE	IMPROVED OPERATIONAL WAYS OF WORKING	COMMISSIONING AND MARKET SHAPING
<b>Transformation Activity (Joint Projects)</b>	<ul style="list-style-type: none"> <li>End of Life Strategy</li> <li>Suicide Prevention Strategy</li> <li>Ageing Well Programme Priorities: Proactive Care Urgent Community Response</li> <li>UECB Priority: Virtual Words</li> </ul>	<ul style="list-style-type: none"> <li>Discharge Frontrunner: Community Recovery Service</li> </ul>	<ul style="list-style-type: none"> <li>Integrated Care Record Under 18s Project (PR1882)</li> <li>UCEB: Hospital Discharge and Recovery (High Impact Change Model)</li> <li>Continuing Healthcare Review</li> <li>System Demand and Capacity capability/planning/modelling</li> </ul>	<ul style="list-style-type: none"> <li>Mental Health / LD / Autism support to Quality Assurance Team - pilot</li> </ul>
<b>Commissioning Lead Activity (including Pilots)</b>	<ul style="list-style-type: none"> <li>Early Intervention and prevention including Social Prescribing</li> </ul>	<ul style="list-style-type: none"> <li>Assistive Technology / Telehealth</li> <li>Hospital to Home</li> <li>Falls Prevention</li> <li>Advocacy Support</li> </ul>	<ul style="list-style-type: none"> <li>Out Of Hospital Review</li> <li>Ageing Well Programme Priority - Enhanced Health in Care Homes</li> <li>Care Home Trusted Assessors – pilot</li> <li>Housing Hospital Liaison Officer - pilot</li> <li>Recommission Integrated Community Equipment Service</li> </ul>	<ul style="list-style-type: none"> <li>Discharge Frontrunner: D2A Lead Commissioning</li> <li>C&amp;W UEC Board Priority - End of Life – Rapid Response pilot</li> <li>Warwickshire Learning Partnership</li> <li>Provider performance and quality assurance framework</li> <li>Market Sustainability</li> </ul>
<b>Business As Usual (Commissioners &amp; Providers)</b>	<ul style="list-style-type: none"> <li>Autism Strategy</li> </ul>	<ul style="list-style-type: none"> <li>Independent Living for Adults, incl. ECH and Shared Lives****</li> <li>Housing Partnership incl. HEART and homeless prevention</li> <li>Housing Related Support</li> <li>Reablement and Rehabilitation</li> <li>Occupational Therapists</li> </ul>	<ul style="list-style-type: none"> <li>ICE s75</li> <li>Links to Out of Hospital: **Single Point of Access Population Health Integrated Place Based Teams Pathways e.g. Frailty ****Telehealth (e.g. Docobo)</li> <li>Continuing Health Care (Joint)</li> <li>Integrated Care Record 18+ (PR517)</li> </ul>	<ul style="list-style-type: none"> <li>Domiciliary Care Market including Brokerage and Outcome Based Commissioning</li> <li>Accommodation with Support s75</li> <li>D2A Model (Discharge To Assess)</li> <li>Moving On Beds</li> <li>Dementia Strategy</li> <li>Carers Action Plan</li> </ul>

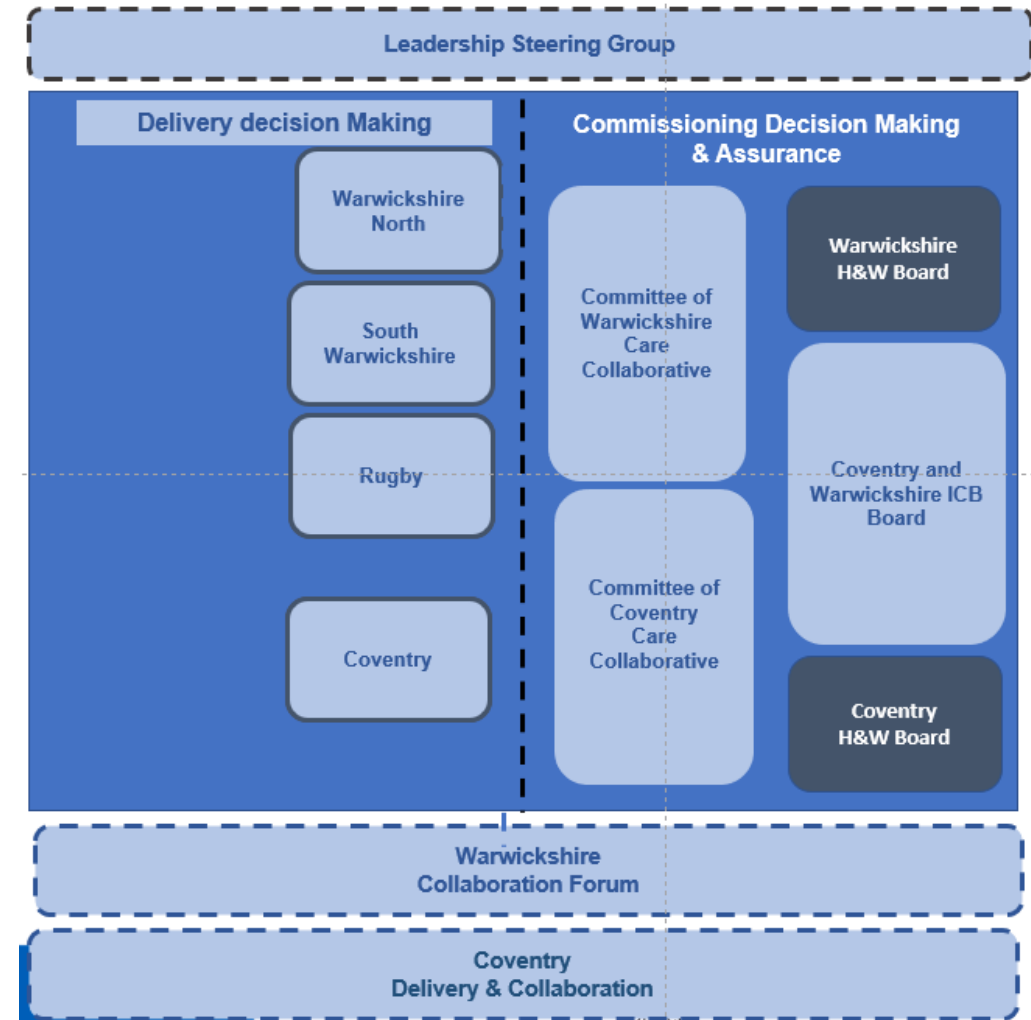


# Changes to BCF governance arrangements

During 2024-26 the new Integrated Care System arrangements will come into effect.

As part of this, development and oversight of the NHS and ICB elements of the BCF will move from the Joint Commissioning Board to the Committee of the Warwickshire Care Collaborative.

Final approval of BCF Plans will remain with the Warwickshire Health and Wellbeing Board as per the national BCF conditions.



Warwickshire  
Health and  
Wellbeing

