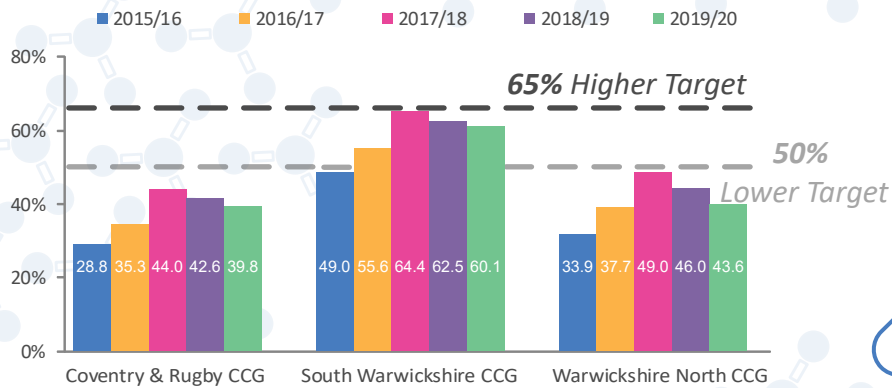


Seasonal Flu Vaccination Children's Programme



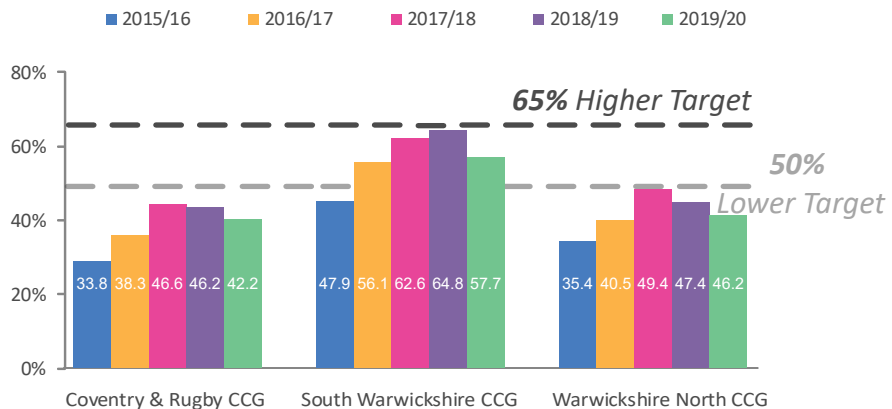
2 year olds:



All 3 CCGs have seen a fall in uptake rates between 2017/18 and 2018/19



3 year olds:



All CCGs have seen a fall in vaccination uptake rates between 2018/19 and 2019/20 for 3 year olds

9%

(433) increase in vaccinations required across Coventry & Warwickshire to reach 50% lower target for 2 year olds

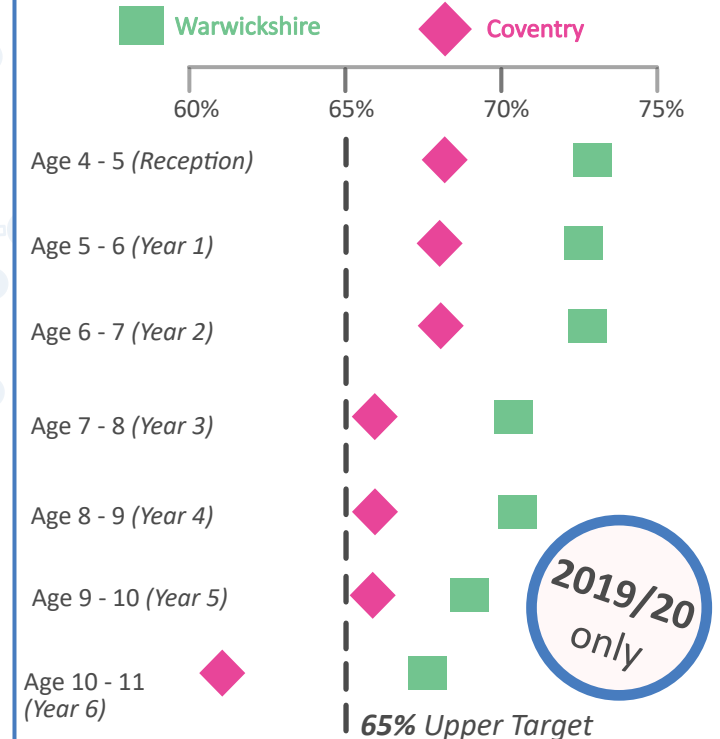
Don't hesitate, let's vaccinate

6%

(343) increase in vaccinations required across Coventry & Warwickshire to reach 50% lower target for 3 year olds



4 - 11 year olds:



2019/20 only

Other than age 10-11 year olds (in Coventry), all primary school uptakes in Coventry and Warwickshire are above the upper national target

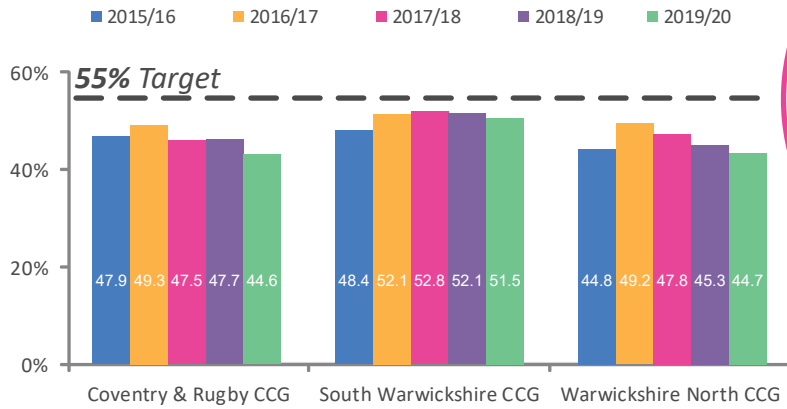
6%

(156) more 10-11 year olds need to be vaccinated in Coventry to reach the 65% target

Seasonal Flu Vaccination Adult Risk Groups



Pregnant Women:

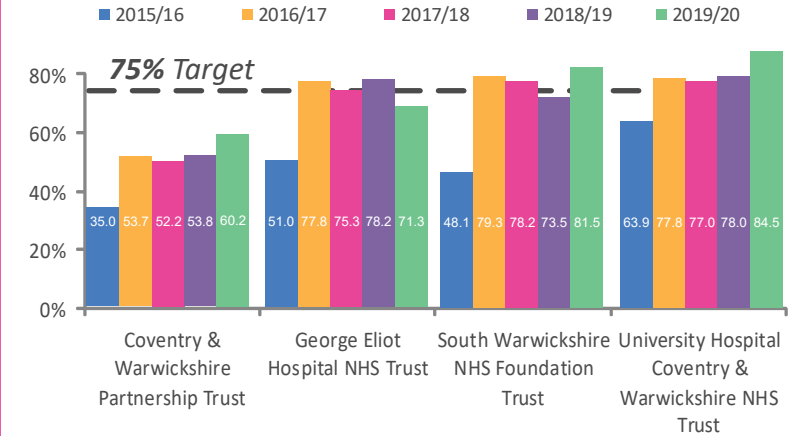


All 3 CCGs are yet to meet the national target (55%) for vaccinations in pregnant women

18%
(921) increase in vaccinations required across Coventry & Warwickshire to reach target for pregnant women



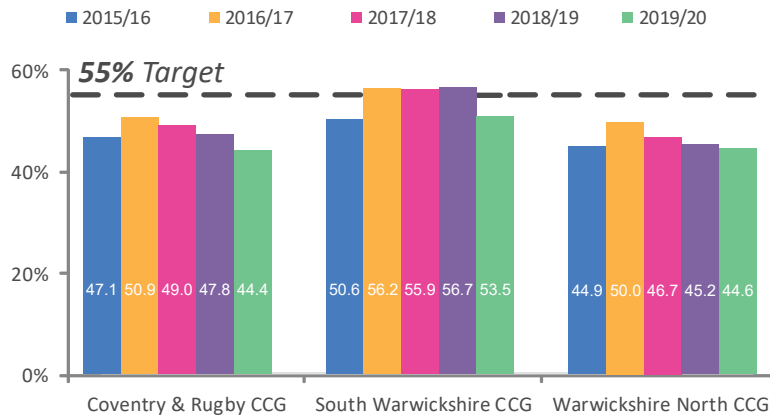
Healthcare Workers:



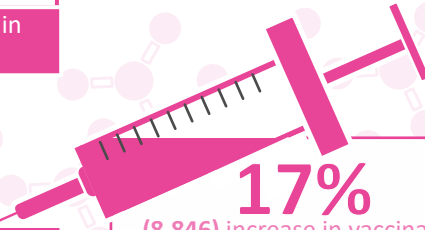
Two out of four Trusts in Coventry and Warwickshire exceed the target (75%) for healthcare worker vaccinations in 2019/20



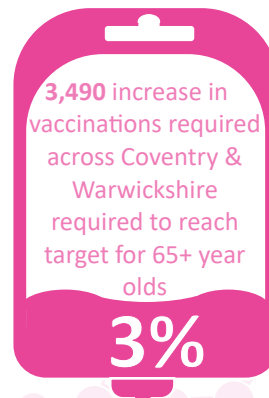
Up to 65 years (Clinical at risk):



South Warwickshire CCG did not meet the target for those aged up to 65 years who are clinically at risk in 2019/20 for the first time in 4 years



17%
(8,846) increase in vaccinations required across Coventry & Warwickshire to reach target for up to 65 year olds



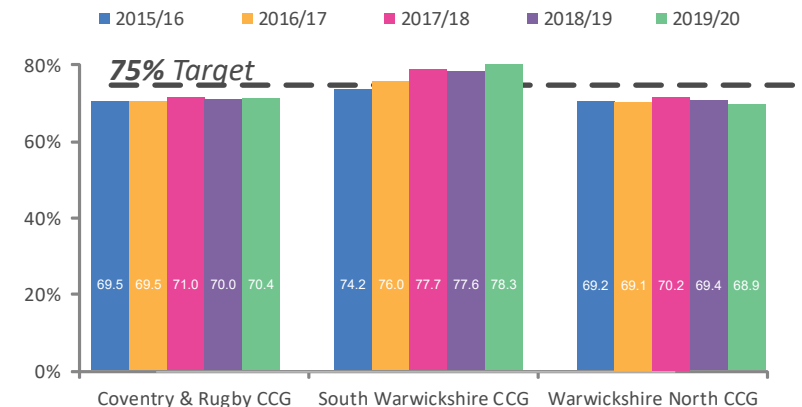
3,490 increase in vaccinations required across Coventry & Warwickshire required to reach target for 65+ year olds

3%

Don't wait, vaccinate



65+ years:



South Warwickshire CCG has been close to or over the 75% target for the last 5 years